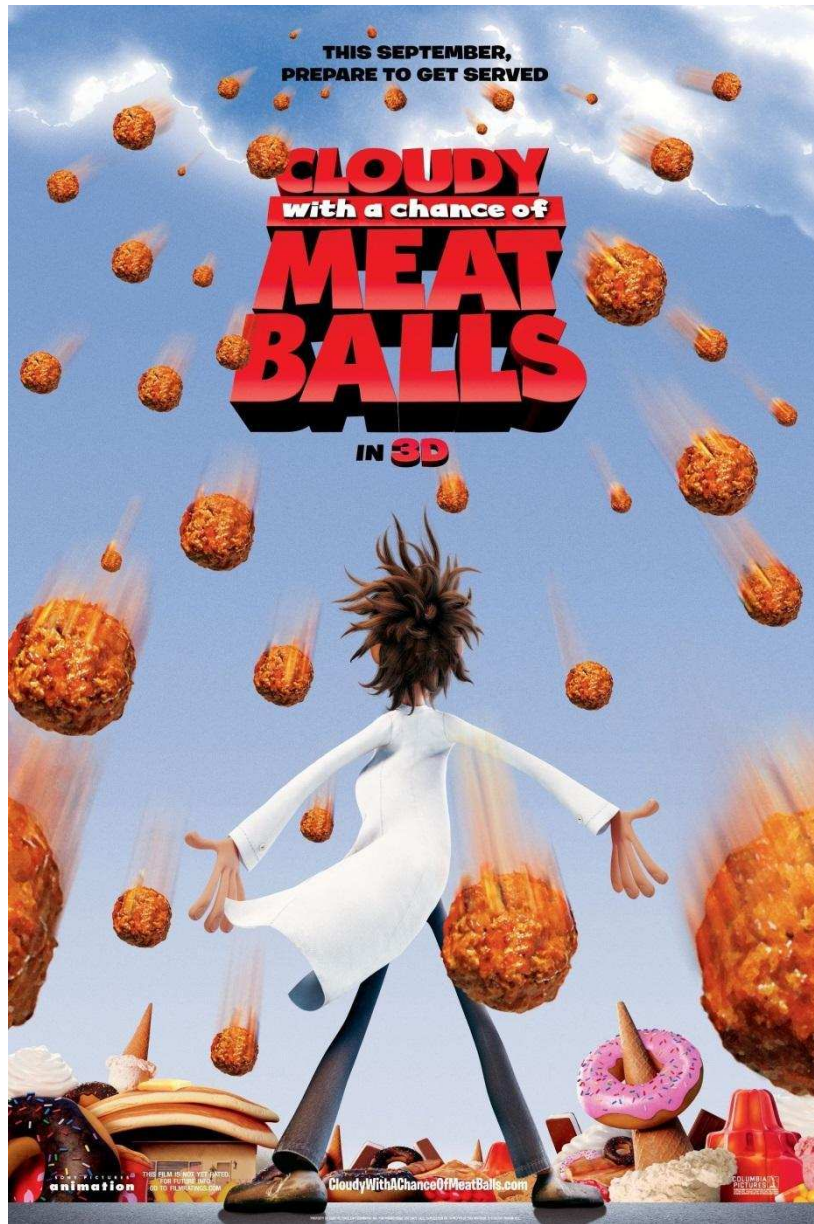


Cloudy With A Chance Of Meatballs Jumpchain



by Faucheusestar

A storm is coming, rain? Lightning? A hurricane? No, a shower of tasty food awaits you, Jumper! Would you survive all these puns? Nothing could be less certain.

Take **1000 Choice Points** to fund your adventures.

Age, Gender and Starting Location

Freely choose your own age or gender, as well as your basic arrival location will be Swallow Falls Island

Origins

Drop-In [Free]

You are dropped in this new universe with no background , memories, or documentation.

Citizen [Free]

You are what one might call a normal inhabitant of this world.

Foodimals Fan [Free]

Do you like adorable animal food puns then this origin is for you!

Race

Jumper isn't reduced to the lifespan of a normal sardine/ Foodimals

Sardine [+400 CP]

A tasty little fish, if you perform tricks you could become the star of the sardine theme park believe in your dreams my wriggling friend.

Foodimals [+200 CP]

An animal based on a food pun, whether it's one already created for the film or a new one of your choice

Human [free]

Good old humans, nothing else to add. If you already have a different species before making the jump, you can keep it if you want.

Perks

Origins get their 100cp perks for free and the rest are discounted to 50%.

Drop in

Your mom believes in you! [100 CP | Free for Drop in]

Aww it's as if your mom or someone you care about has always encouraged you to believe in your dreams and it seems that it worked! No matter the difficulties you never give up even if for ten years all your inventions failed catastrophically!

Cartoon logic [200 CP | Discounted for Drop in]

Your inventions are strange as if they follow an out of this world logic. Of course they can fail if you are not careful, but it is as if everything you create is now fiat baked assuming that you have the knowledge for the metaphysics of one of the worlds that you have visited to make it functional.

I made everything out of Jell-o [200 CP | Discounted for Drop in]

As long as you know how to make a few things, the materials don't matter. You could make a radio or even a piano out of Jell-o and it would work just as if it were made of normal materials.

Unlikely inventor [400 CP | Discounted for Drop in]

You're a genius at inventing improbable technologies. While many might clearly consider you strange, there's no denying that your wacky inventions work, whether it's a machine that converts water into food or something else.

In one night [600 CP | Discounted for Drop in]

Make it rain Jell-o overnight and with a mold here is a Jell-o castle with all furniture included! With this perk you too can finish the construction of any project no matter how absurd it may be as long as you have the skills and materials in a single night!

Citizen

Jobs [100 CP | Free for Citizen]

You have the basic skills to pursue a career of your choice, such as meteorologist or fisherman.

Acrobatics [200 CP | Free for Citizen]

You know how to do somersaults and all kinds of jumps and maneuvers exaggerate whether you use it to stop someone or to jump into a flaming circle to replace the mascot of the park on the sardine theme still remains to be had.

Instinct [200 CP | Discounted for Citizen]

You can detect when a crime or a messed up situation like that mad scientist causing mayhem in your city is brewing.

But no they are not dangerous [400 CP | Discounted for Citizen]

You are really good at taming wild creatures and understanding what they really want, enough to make lots of friends and share your passions with them.

Overqualified [600 CP | Discounted for Citizen]

Doctor, cameraman, pilot, and actor, your resume is well filled. You can take four jobs in this jump, then one at each new jump. You will be an ace in the skills needed to perform them. Although this does not give you any supernatural skills or special bloodlines and remains limited to normal skills.

Foodimals Fan

Too cute to be a monster [100 CP | Free for Foodimals Fan]

Jumper is evil looking at him with all his weird stuff... Is he actually too cute? Well it seems that whatever you look like and whatever your scary powers are, people will give you the benefit of the doubt until you prove to them that you're actually evil! Can be activated/deactivated at any time.

Foodimals Creation [200 CP | Discounted for Foodimals Fan]

When you create food, you can make it come alive, like gummy bears acting like gremlins destroying airplanes, or even homing heads flying pizza slices.

The food is excellent materials [200 CP | Discounted for Foodimals Fan]

Food is strangely a very good material in your hands whether it's creating pieces of sharp almond tiles, using a shrimp and spaghetti as a grappling hook or even a toast and a slice of pizza as a ship. Anything that uses food will be much more efficient and will not expire.

FLDSMDFR's power [400 CP | Discounted for Foodimals Fan]

Remember the iconic machine that could create food by converting water? Obviously, with a name like that, it's easy to remember. Well, you had the same ability to create food and many adorable and improbable dish creatures.

Foodimals aren't monsters! They're friends! [600 CP | Discounted for Foodimals Fan]

You will find that in your times of great need and those times a huge army of these adorable creatures will come to your aid. This acts as a bit of a one-up and ensures you survive this time. In addition, similar creatures will always start out as friendly towards you even if that shouldn't normally be possible.

Items

Items may be imported into similar - items, weapons to weapons, clothes to clothes, etc.

Drop in

Lol Cats [100 CP | Free for Drop in]

Quick, you need a distraction! Well, this funny cat video can pop up on any screen at your convenience and keep your audience entertained for a while.

Lab kit [200 CP | Discounted for Drop in]

A lab coat like the ones real scientists wear makes you feel more determined and more successful in creating inventions and doing all kinds of science! Comes with an authentic danger meter and everything you need to make more, this device warns you of future disasters.

Flying car [200 CP | Discounted for Drop in]

A flying car identical to the one used to cross the storm of giant meatballs, its chest contains some of its inventor's "failed" inventions.

Flint's laboratory [400 CP | Discounted for Drop in]

This is a laboratory similar to Flint's, it is much larger inside, equipped with hologram systems to conceptualize your inventions as well as a huge stock of all types of materials that can be purchased in the general store and are refilled every month.

Live corp [600 CP | Discounted for Drop in]

This is a similar undertaking to Chester V. With a large number of scientists, although all of them are particularly skilled, the type of inventions he invents are based on the technology and metaphysics of your current jump and are still quite wacky.

Citizen

Fishing rod [100 CP | Free for Citizen]

A fishing rod with a bucket that never empties filled with sardine bait that allows you to catch sardines... Is this cannibalism? But no, sardines just know they're delicious!

Ship [200 CP | Discounted for Citizen]

A ship that can't break down or run out of fuel, ideal for exploring an island full of monsters that are as dangerous as they are delicious!

Its sardine-themed entertainment [200 CP | Discounted for Citizen]

Watching Jumper is a miracle! The sardine-themed amusement park survived! And here you are in its possession obviously many people will come to visit it, bringing you a good profit.

Shop [400 CP | Discounted for Citizen]

You own a business like the Baby Brent cannery, fortunately for you your business will not suffer the same fate and will flourish.

Swallow Falls [600 CP | Discounted for Citizen]

Swallow Falls is a small island that has always been a rich source of local fish, especially sardines. You get the whole island as a copy of its inhabitants as loyal followers.

Foodimals Fan

New Foodimals [100 CP | Free for Foodimals Fan]

This is a normal sheet of paper at first glance, however if you write a pun like those of Foodimals then a new one will appear. Don't hesitate to use it often because you get a new sheet every week!

Mechanized armor [200 CP | Discounted for Foodimals Fan]

A mechanized armor normally belonging to Live corp and stolen by a strawberry this armor is equipped with a cannon freezing things in ice, a danger detection system and can be worn whatever your size or shape

Is this a Foodimals? [200 CP | Discounted for Foodimals Fan]

Foodimals are really fun filled with delicious puns, but maybe you want to make a new type of animal pun based on something other than food with this you can! At the start of each jump you can choose an idea and animals with similar abilities will appear on a lost island indicated on this map.

Flint Lockwood Diatonic Super Mutating Dynamic Food Replicator [400 CP | Discounted for Foodimals Fan]

The iconic machine that caused Cloudy with a Chance of Meatballs, though as long as you don't issue too many commands at once and stay more reasonable it can indeed stem the end of the world by converting water molecules into any food.

Foodimals's island [600 CP | Discounted for Foodimals Fan]

This is the island filled with adorable Foodimals and delicious environment, as long as the machine which is in the center of a mountain of rock candy stays there all the food alive or not is infinite, and the ecosystem works by itself without the food spoiling or becoming unfit for consumption.

Companions

Companions can purchase more companions.

Companion Import [50-200]

Do you want to bring your friends to this adventure? Or can create new friends, this is for you

50 CP/companion, 200 CP/8 companions, each gets 600 CP.

Canon Companion [Free]

You want one of the canon characters as a companion then this option and for you if you manage to convince the latter he will be able to follow you on your adventures and obtain 300 CP as a gift

Drawbacks

Self-Insert [+0]

So you want to be one of the Named characters huh, well if you take the appropriate background, race and skills as closely as possible then you are free to go in as any character you would like.

Supplement [+0 CP]

You can use this Jumpdoc as a supplement

Extended Stay [+100 CP]

For each purchase of this your time here is extended 10 years (max five)

Communication problem [+100 CP]

You can only speak in metaphor, whether it's about fishing or any other topic of your choice, or in wordplay about fruits and other foods.

Sardine [+200 CP]

Since the Baby Brent cannery had to close, the island has had a problem with too many sardines, but luckily you're here! During this whole jump you'll be able to eat only sardines (the rest of the food always manages to escape you), this won't give you any deficiencies or health problems, and you're probably looking forward to eating sardine candy, right?

What is the name of the machine that turns water into food? [+200 CP]

Be careful not to cheat, write down the name somewhere and check if you have the right one, if yes then here is 200CP if not then take 100CP for the effort! The answer is at the end if you look but no cheating!

Partial Lockdown [+200 CP]

You have no warehouse and the only items you own are the ones you're carrying. What's more, your powers are adapted to the level of power in this world

Lockdown [+400]

You have no **Out Of Context** items, powers, or warehouse.

Decisions

You have three choices ...

Go to next Jump

Continue onto the NEXT GREAT ADVENTUUUUURE!!!!!!

Stay

Stay and enjoy your current life.

Go back

Tired of your travels and want to rest back home, well then this is for you, grab this ticket back to your starting point and go see old friends.

The machine is called: FLDSMDFR (The Flint Lockwood Diatonic Super Mutating
Dynamic Food Replicator)