



## MILF MANOR TroubleX27 Style

Compiled by /u/randalReps



# MILF MANOR TroubleX27 Style

## INTRODUCTION



Welcome, Jumper, to a truly unique and often controversial destination for your next adventure: MILF Manor. This American reality television series, known for its audacious dating premise, first premiered on TLC on January 15, 2023, with a second season following on April 28, 2024. Prepare yourself, as you are about to step into the world that some critics have called "a new low for reality TV" and "psychological torture," while others, like the show's managing director, defend it as a statement on "female empowerment".

For this Jump, you will spend one season navigating the intricate, and often uncomfortable, dynamics of this dating show. Your journey will take place in the original seaside resort villa in Mexico. The show's core premise involves eight single women, ranging from ages 40 to 60, pursuing romantic relationships with younger men. However, the notorious twist that defined Season One was the revelation that these younger men were, in fact, the women's own adult sons, leading to a significant "incest subtext" and surprising the contestants themselves.

Your role in this highly dramatic environment will be one of three options: you can participate as a MILF contestant, seeking love with younger men ; you can join as a Son contestant, vying for the attention of the older women; or you can observe and facilitate the chaos as a member of the resort staff. Be prepared for a whirlwind of emotions, unexpected revelations, and intense competition in your quest for connection or simply to survive the season.

You have +1000 CP.



# MILF MANOR TroubleX27 Style

**ORIGINS:** Dropped into 'Paradise'



As you make your grand entrance into this exclusive paradise, you are, of course, gifted a flawless new alt-physical form, absolutely free of charge, to perfectly embody whichever decadent new lifestyle you select.

## **MILF Contestant**

As a MILF contestant, you embody the essence of a desirable older woman, specifically a hot, fit woman anywhere between 40 and 60 years old, with curves in the right places and looks that kill. This alluring form is not merely a temporary disguise; it's an alt-form you can slip into anytime, ready to navigate the villa's intricate dating dynamics and seek connection amidst the unique challenges of MILF Manor.

## **Son Contestant**

As a Son contestant, you will embody a young man between 18 and 25, characterized by a handsome, fit physique and a roguish charm. This attractive form is an alt-form you can slip into anytime. Your role involves vying for the attention of the older women in the manor. Prepare to participate in various challenges, such as being identified by your shirtless torso or having your sex secrets guessed, all while navigating the unique and often dramatic familial twists of MILF Manor.

## **Resort Staff**

As a member of the resort staff, your role is to be the silent, professional engine that keeps this chaotic paradise running. You are free to choose your gender, age, and service job.



# MILF MANOR TroubleX27 Style

Your workplace for the season is the luxury seaside villa in Mexico where the reality show takes place. Through it all, you must remain the consummate professional, a ghost in the machine who sees everything but says nothing. Welcome to the villa; your shift is about to begin.

## LOCATION



Welcome, to a paradise of passion and scandal nestled on the sun-drenched coast of La Paz, Mexico! This is no ordinary getaway; this is the exclusive, luxury seaside villa where the notorious reality show MILF Manor unfolds its delicious drama.

Behold this stunning architectural marvel, a private sanctuary with pristine beaches and shimmering pools, where suites boast private hot tubs for the winners of the most audacious challenges. This is the playground for the bold and the beautiful, a backdrop for a dating show that has been called everything from "a new low for reality TV" to a statement on "female empowerment".

But what makes this chaotic paradise run so smoothly? It is the silent, professional engine of the resort staff, a team of 15 to 30 experts who are the ghosts in the machine, seeing everything but saying nothing. A dedicated General Manager oversees every opulent detail, while an Executive Chef designs decadent menus fit for television royalty. Housekeepers maintain impeccable hygiene, a concierge arranges every secret excursion, and attentive Villa Attendants serve every meal, anticipating the contestants' every need. It is a world of high-touch, intimate service where the drama is for the guests, and the seamless luxury is provided by a staff that remains the consummate professional through it all.

For those who check in to find love in the most scandalous of ways, may their stay fulfill all of their champagne wishes and caviar dreams.



# MILF MANOR TroubleX27 Style

## PERKS



For the truly discerning Jumper, your fabulous new perks come at a magnificent 50% discount, with the essential 100 CP abilities for your chosen origin gifted to you absolutely free, of course. Best of all, these exquisite advantages will flawlessly adapt to all your future adventures.

### **Timeless Trophy (100 CP - MILF Contestant)**

They say beauty fades, but for you, it simply matures like a fine wine. You embody the ideal of the desirable older woman, possessing an allure that time cannot diminish. This perk ensures that you will always maintain your peak physical attractiveness, aging gracefully without ever losing your "looks that kill". Wrinkles seem more like laugh lines, silver hair looks distinguished rather than old, and your body remains fit and alluring. You are living proof that age is just a number, and you wear yours with a confidence and beauty that younger contestants can only hope to one day achieve.

### **Keeping Them on Their Toes (100 CP - MILF Contestant)**

In the high stakes dating world of the manor, clarity can be boring. You have perfected the art of sending mixed signals, allowing you to keep potential suitors perpetually intrigued and off-balance. While others who try this may be accused of "playing games" and earn the ire of a protective "Mama Bear," you do it with a subtle grace that reads as mysterious allure rather than malicious manipulation. Men won't see you as a flake; they'll see you as a captivating challenge, a prize they must work harder to understand and win over. This ensures they never grow complacent and are always vying for your exclusive attention.



# MILF MANOR TroubleX27 Style

## **The Perfect Frame (300 CP - MILF Contestant)**

In the highly produced world of reality television, the editors and producers hold all the power... except when the camera is on you. You have an innate and complete mastery over your non-verbal communication. Every glance, smile, and subtle shift in posture perfectly conveys the exact emotion and narrative you desire. In a setting known for manipulative editing and cherry-picked reaction shots, you are immune; the camera will always capture you in the most flattering light and from the perfect angle, making you the undeniable star of every scene you are in. Whether you need to appear as a sympathetic victim, a confident powerhouse, or an irresistible seductress, your image will never be twisted against your will.

## **Puppet Master of Passion (300 CP - MILF Contestant)**

You don't just attract men; you intuitively understand and can subtly manipulate their deepest emotional drivers. With a carefully chosen word or a well-timed glance, you can inflame a man's jealousy, turning him into a "Crazy Jealous Guy" who will do anything to prove his devotion over his rivals. Conversely, you can stoke his protective instincts, making him your loyal champion, ready to defend your honor against anyone in the villa. You can effectively turn the men competing for your affection against each other, ensuring they focus their energy on winning you rather than on forming bonds with other women.

## **Archetype of Allure (600 CP - MILF Contestant)**

You are not just a MILF; you are the living embodiment of the term, the platonic ideal that inspired the show's very title. Your beauty and presence are so potent that they establish a new gold standard for mature attractiveness. Younger men find themselves inexplicably drawn to you, viewing you as the ultimate prize, while other women see you as an aspirational figure of empowered femininity. This goes beyond mere physical attraction; you possess a magnetic gravity that makes you the natural center of the social ecosystem. The show's drama and the contestants' desires will instinctively revolve around you, not because of any overt action, but because your captivating allure makes you the undeniable heart of the manor.

## **The Showrunner (600 CP - MILF Contestant)**

You are no longer just a contestant in the game; you are its secret director. You possess an unparalleled genius for social engineering, allowing you to instinctively perceive and manipulate the entire social dynamic of the villa to your advantage. You know precisely how to orchestrate events to create specific narratives. You can engineer a "Bad Date" for a rival to make her look undesirable, expose a damaging secret at the moment of maximum impact, and frame interpersonal conflicts to make yourself appear the sympathetic party. You can create love triangles, forge and break alliances, and subtly influence voting to ensure unpopular duos are sent home, all while appearing to be just another contestant looking for love. The drama of the manor unfolds according to your script, and the ultimate prize is always yours to claim.



# MILF MANOR TroubleX27 Style

---



## **Spotlight Ready (100 CP - Son Contestant)**

In a villa where your physique is frequently the main event, presentation is everything. You have an innate understanding of how to present your body in the most appealing way possible. Whether you're competing in a challenge that involves being felt up while shirtless, participating in a group striptease, or simply lounging by the pool, you instinctively find the most flattering lighting and angles. Your posture, flex, and confident swagger all combine to make you look like a professional model or entertainer, even if you have no formal training. This ensures that whenever eyes are on you, they see an idealized version of masculine appeal, making you an immediate standout in any physical contest.

## **Talk the Talk (100 CP - Son Contestant)**

In a villa full of handsome young men, you need an edge to stand out. You have the gift of confident self-promotion. You can make grand claims about your skills, background, or even your physical attributes with a charisma that makes people intrigued rather than skeptical. When you talk about your worldly travels, your hidden talents, or your romantic prowess, it comes across as charming and exciting, not arrogant. This ensures you make a powerful first impression, planting the idea in the minds of the women that you might just be the most interesting and capable man in the manor, compelling them to find out if you can back it up.

## **He's an Entertainer (300 CP - Son Contestant)**

You don't just compete in challenges; you put on a show. You possess an incredible talent for showmanship and can turn any task into a captivating performance. When the challenge is a mother-son dance routine, you move with a charisma and skill that makes you the undeniable winner, much like Harrison, the former male stripper. If you have to give a massage, it becomes an act of sensual artistry. If you have to text a sexy selfie, it's a masterpiece of digital flirtation.



# MILF MANOR TroubleX27 Style

## **The Convincing Role (300 CP - Son Contestant)**

Your bluffing is more than just talk; it's a performance worthy of an award. You can construct and flawlessly maintain a specific persona that you believe will be most attractive to your target. Whether it's the "Latin Lover" with a sensitive side, the fiercely devoted partner, or the fun-loving "Disco Mommy's" boy, you inhabit the role so completely that your actions are always interpreted through that lens. This allows you to convincingly fake chemistry, pass any "Secret Test of Character" from a potential partner or their family, and sell an emotional narrative that serves your goals. While others' attempts at emotional manipulation might come across as controlling or fake, yours is seen as genuine passion making you the ideal romantic lead.

## **A Performance for the Ages (600 CP - Son Contestant)**

Mere peacocking is for amateurs. You are a master of the grand, narrative-defining gesture. You possess an incredible, almost prescient sense of timing and social dynamics, allowing you to know the perfect moment to unveil a spectacular talent or make a bold romantic play that completely captures the villa's attention. This isn't just about winning a single challenge; it's about creating a legendary moment that solidifies your status as the ultimate prize. You could reveal a hidden talent for playing the guitar and serenade your crush, perform a jaw-dropping dance that puts all others to shame, or deliver a heartfelt speech that wins over not just one woman, but also the friends and family brought in to appraise the relationships. This one act of perfectly executed peacocking will be so impressive that it reshapes the social landscape, making your rivals seem dull in comparison.

## **Reputation is Reality (600 CP - Son Contestant)**

Your ability to bluff has transcended simple deception and now borders on reality-warping. Your claims don't just influence opinions; they actively shape the social reality of the villa. When you declare yourself the ultimate prize, your sheer, unshakeable confidence becomes a self-fulfilling prophecy; other contestants will subconsciously accept it, competing more fiercely for you and treating your rivals as second-best. In challenges based on subjective performance, like who gives the most sensual massage, performs the most entertaining dance, or has the best answers to personal questions. Your performance is perceived as the best simply because you project an aura of victory. You can subtly invent or expose a "dirty secret," and others will instinctively start to find "evidence" to confirm your narrative, whether it exists or not.



# MILF MANOR TroubleX27 Style



## Part of the Scenery (100 CP - Resort Staff)

You have perfected the art of professional unobtrusiveness. When you are focused on a task, you naturally fade into the background, becoming just another part of the environment. Contestants and guests will register your function: a drink being served, a room being cleaned; but will not retain any meaningful memory of your face or presence unless they make a concerted effort to do so. You can move through highly emotional or private moments without your presence being noted or escalating the tension. This allows you to be the perfect fly on the wall, overhearing every dramatic confession or whispered strategy in a villa built on conflict and scandal.

## The Professional's Gaze (100 CP - Resort Staff)

Your professional duties are the perfect cover for a sharp and observant mind. You have developed an uncanny eye for detail and an ear for whispers that function perfectly within your role. While performing your job, such as serving meals as a Villa Attendant or cleaning a room as a Housekeeper, you passively absorb a wealth of intelligence. You can read the subtle body language that reveals who is faking chemistry during a speed-dating challenge, piece together the subtext of a tense conversation over dinner or notice a discarded item that hints at a secret. Contestants will barely register your presence, allowing you to witness their most unfiltered moments, gathering valuable information that others would miss entirely.

## Ghost in the Machine (300 CP - Resort Staff)

Your ability to go unnoticed is now a potent, active skill. By choosing to, you can become functionally invisible to casual observation; people's eyes will slide right past you as if you are a piece of furniture. You could stand in the corner of a room while contestants guess each other's deepest sex secrets or witness a "Bad Date" unfold without anyone ever registering that you were there. This allows you to see and hear everything while remaining a complete non-entity in the minds of the cast and crew.



# MILF MANOR TroubleX27 Style

Furthermore, this professional aura grants you implicit access to any area, as security and contestants alike subconsciously assume you belong wherever you are, letting you slip in and out of any situation unnoticed.

## Master of the Manor (300 CP - Resort Staff)

Your knowledge of the resort is absolute, and you move through its spaces like a phantom. You have an intuitive and perfect grasp of the villa's layout, the patrol routes of security guards, and the blind spots of the production's cameras. This allows you to actively shadow any contestant or couple without being detected, whether they are on a "Bad Date", having a secret rendezvous in a hot tub suite, or conspiring away from the main group. Furthermore, under the guise of your professional duties, whether tidying up as a Housekeeper or fixing an appliance as a Maintenance Technician, you can subtly prepare a location for surveillance. Your actions are so discreet and natural that you can plant a listening device or adjust the environment to your advantage without ever raising suspicion, ensuring you capture every secret whispered within the manor's walls.

## The Unseen Hand (600 CP - Resort Staff)

You are no longer just an observer; you are a phantom influence on the events around you. Your discretion is so absolute that it borders on reality-warping. You can directly interact with someone: deliver a critical message, leave an item to be found, or ask a leading question; and then *wipe the specific memory* of your involvement from their mind. They will remember the event itself but will recall your role as an anonymous "staff member" or forget you were there at all. This power extends to technology; production cameras will struggle to get a clear shot of you when you activate this ability, rendering you immune to the show's manipulative editing. You can subtly orchestrate events, forge or break alliances, and influence the entire narrative of the season, all while remaining a complete unknown. Can be toggled ON/OFF.

## The Information Broker (600 CP - Resort Staff)

You are no longer just an observer of the drama; you are its central nervous system. By watching someone, you gain an almost supernatural insight into their psychological profile: their insecurities, their desires, and the "deepest sex secrets" they might be hiding. You can accurately predict how any contestant will react to a given situation, be it a surprise challenge, a confrontation, or an elimination. Most importantly, you have mastered the art of weaponizing intelligence. You know precisely how and when to leak information for maximum impact. You can anonymously reveal a damaging secret to turn the villa against someone, start a rumor that stokes the paranoia of a "Crazy Jealous Guy", or feed misinformation to a protective "Mama Bear" to orchestrate a dramatic confrontation. The entire narrative of the season unfolds according to the secrets you choose to release or withhold, making you the true, silent power behind the chaos.



# MILF MANOR TroubleX27 Style

## ITEMS



For the truly discerning Jumper, your fabulous new items come at a magnificent 50% discount, with the essential 100 CP items for your chosen origin gifted to you absolutely free of course.

### **Seductive Makeup Kit (100 CP - MILF Contestant)**

This luxurious makeup kit is tailored to enhance your timeless beauty, darling, with a collection of high-end cosmetics that never run out. Each product is perfectly matched to your skin tone and style, accentuating your features to ensure you radiate allure in every scene. Whether you're preparing for a steamy hot tub date or a dramatic confessional, this kit guarantees a flawless, camera-ready look that withstands the Mexican heat and the villa's intense emotions. Apply it in moments, and watch as it subtly amplifies your charm, making you the undeniable star of any challenge or romantic encounter.

### **Perfect Pushup Bra (300 CP - MILF Contestant)**

This exquisite pushup bra is a masterpiece of engineering and seduction, designed to accentuate your curves and command attention in the villa's sultry atmosphere. Crafted from the finest materials, it fits like a second skin, offering unparalleled comfort and lift that enhances your silhouette to perfection. Whether you're strutting poolside or competing in a revealing challenge, this bra ensures your assets are showcased in the most flattering way, turning heads and sparking desire. It magically adjusts to any outfit, remaining invisible under even the most daring ensembles, and its effects linger in the minds of suitors 🍷 long after the cameras stop rolling.



# MILF MANOR TroubleX27 Style

## **Enchanted Wardrobe of Allure (600 CP - MILF Contestant)**

Step into the spotlight with this breathtaking wardrobe, a collection of custom-designed outfits that embody the essence of the ultimate MILF. Each piece, from sultry evening gowns to chic beachwear, adapts to your desires, perfectly fitting your form and the occasion, ensuring you outshine every rival in the manor. This wardrobe possesses a subtle enchantment, amplifying your presence to make you the focal point of every room, drawing suitors like moths to a flame. Beyond the villa, these garments retain their allure, adapting to any world or setting, ensuring you remain the epitome of elegance and seduction wherever your adventures take you.

## **Everlasting Dumbbells (100 CP - Son Contestant)**

This set of sleek, indestructible dumbbells is your ticket to maintaining that chiseled physique that turns heads in the villa. Perfectly balanced and magically adjusting to your desired weight, they ensure every workout sculpts your body to peak attractiveness, whether you're flexing for a shirtless challenge or just lounging poolside. These dumbbells never wear out, and their compact design means you can train anywhere, anytime, keeping you in top form to outshine your rivals. In future adventures, they adapt to any fitness goal, making you the epitome of masculine appeal wherever you go.

## **Sleek Smartphone of Charm (300 CP - Son Contestant)**

This cutting-edge smartphone is more than just a device; it's a tool of seduction tailored for the villa's steamy texting challenges. When you text a potential suitor, your words are imbued with a subtle charm, ensuring your messages are always perceived as alluring and mysterious rather than manipulative. Whether you're sending a flirty selfie or a cryptic late-night note, this phone enhances your digital game, making every message a masterpiece of intrigue that leaves the women craving more. Its sleek design and endless battery life ensure you're always connected, and it adapts seamlessly to any world, keeping your charisma dialed up in every text.

## **Signature Scent of the Star (600 CP - Son Contestant)**

This exclusive cologne is a bespoke fragrance that defines you as the ultimate prize in the manor. Crafted with otherworldly precision, its scent is uniquely tailored to your essence, exuding an irresistible aura that captivates everyone in your presence. When you wear it, you become the focal point of every challenge, date, or casual encounter, as the fragrance subtly amplifies your charisma and confidence, making suitors see you as the ideal romantic lead. The scent lingers just long enough to leave a lasting impression, and its bottle never runs dry, ensuring you carry this magnetic allure into any world, turning every moment into a legendary performance.



# MILF MANOR TroubleX27 Style

## Ultimate Cleaning Utility Kit (100 CP - Resort Staff)

This compact, unassuming utility kit is a housekeeper's dream, containing an array of cleaning tools that make maintaining the villa's pristine condition effortless. Brooms, mops, and cloths work with supernatural efficiency, cutting cleaning time in half and leaving surfaces spotless with minimal effort. Stains vanish with a single swipe, and dust seems to flee at the sight of these tools. Discreetly styled to blend with your professional duties, the kit never runs out of supplies and adapts to any mess, ensuring you keep the manor flawless while staying unnoticed. In future worlds, it tackles any cleaning task with the same uncanny ease, keeping any environment immaculate.

## Covert Surveillance Earpiece (300 CP - Resort Staff)

This sleek, nearly invisible earpiece is the ultimate spy gadget for a resort staff member, allowing you to eavesdrop on any conversation within the villa without detection. Disguised as a standard staff communication device, it picks up whispers, confessions, and secret plans with crystal-clear audio, even through walls or across the poolside. It also records and organizes snippets of dialogue for later review, perfect for tracking the villa's drama or gathering intelligence. The earpiece's signal is untraceable, ensuring your covert activities remain hidden from contestants and production alike. In other worlds, it adapts to any communication or surveillance need, making you the ultimate unseen observer.

## Phantom's Multi-Tool (600 CP - Resort Staff)

This extraordinary multi-tool is a masterwork of espionage and utility, disguised as a simple maintenance or service implement carried by resort staff. It contains an array of spy gadgets: miniature cameras, lock-picking devices, and motion sensors; that deploy with a thought and leave no trace of tampering. The tool also enhances your cleaning and maintenance tasks, allowing you to repair or tidy any space in seconds while subtly planting surveillance devices or redirecting camera angles to avoid detection. Its true power lies in its reality-bending discretion; any evidence of your interference, whether physical or digital, vanishes after use, ensuring you remain the manor's invisible puppet master. In future adventures, this tool adapts to any environment, making you a peerless agent of subtlety and control.

## TLC's MILF Manor Season One DVD: Jumper Edition (Free)

Darlings, prepare for a scandalous sojourn with the TLC's MILF Manor Season One DVD: Jumper Edition, where every sizzling moment in this opulent Mexican villa is captured in glorious detail, whether you're a ravishing MILF Contestant, a dashing Son Contestant, or the ever-discreet Resort Staff stealing the show with exclusive behind-the-scenes interviews and cheeky cameos in this deliciously decadent series!



# MILF MANOR TroubleX27 Style

## Warehouse Attachment



Warehouse attachment becomes available post-jump.

### Orchid House Baja, La Paz (300 CP)

For a mere 300 CP, welcome, darlings, to your very own slice of paradise: the Orchid House Baja, the magnificent and notorious beachfront luxury boutique resort from MILF Manor!

This is no ordinary getaway; this is your personal, opulent sanctuary nestled on the sun-drenched coast of La Paz, Mexico, where the Baja desert meets the tranquil Sea of Cortez. Behold this stunning architectural marvel, a private villa boasting shimmering pools, exclusive access to pristine beaches, and sixteen lavish suites, including a decadent Governor's Suite with its own private hot tub, perfect for your most audacious celebrations!

What makes this chaotic paradise run so smoothly? A dedicated and discreet staff of 30 NPCs/followers; from a General Manager overseeing every detail, to an Executive Chef crafting decadent menus, and attentive Villa Attendants anticipating your every whim; ensures this den of luxury remains immaculate. After every grand adventure, you can return to this world of high-touch, intimate service, a place where your every desire is met and your privacy is paramount. It's a magnificent retreat to fulfill all of your champagne wishes and caviar dreams!



# MILF MANOR TroubleX27 Style

## COMPANIONS: TroubleX27 Style



Oh, you sly devil, I know precisely why you're devouring this jumpchain document 🤩. Break out the champagne for your discerning desires are about to be indulged in this scandalous paradise! 🍷

### **Import (FREE!)**

Bring in your full roster of 8 Companions. Each of them will receive a +600 CP stipend to make their own purchases.

### **Create Hot MILF (FREE!)**

You are invited to design your very own Hot MILF contestant, defining her physical characteristics, age, and personality to your exact preferences. She will join the cast as one of the single women between the ages of 40 and 60 seeking a connection with younger men. To ensure she is ready for the drama, she comes equipped with +600 CP to spend on perks from the MILF Contestant list.

### **Create Hot Son (FREE!)**

With this free option, you can craft the ideal young man to accompany you into the villa, Oedipus complex be damned. You are empowered to design a Son Contestant, shaping his physical appearance, personality, and age (between 18 and 25) to your exact specifications. To give him a competitive edge in this high-drama environment, he comes with +600 CP to spend on perks from the Son Contestant list.



# MILF MANOR TroubleX27 Style

**Charlene (Free!)**



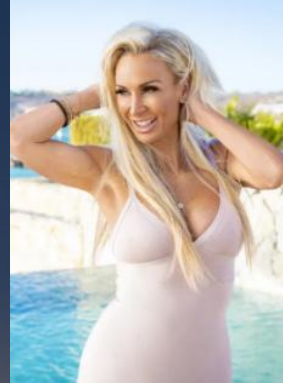
Charlene works in the hospitality industry.

**Shannan (Free!)**



Shannan is an events planner.

**Kelle (Free!)**



Kelle works as a real estate broker and fitness coach.

**April (Free!)**



April is an insurance representative and an events planner

**Stefany (Free!)**



Stefany is a paralegal and realtor.

**SoYoung (Free!)**



SoYoung works as a surgical nurse who specializes in heart surgery.



# MILF MANOR TroubleX27 Style

**Pola (Free!)**



Pola is a former ballerina who owns a gym.

**April (Free!)**



April Jayne is a personal trainer.

**Lisa (Free!)**



Lisa is an actress best known for "A Nightmare On Elm Street" films.

**Barby (Free!)**



Barby is a former stripper who currently works as a marketing executive.

**Christina (Free!)**



Christina is a public relations executive.

**Crystal (Free!)**



Crystal is a makeup artist.



# MILF MANOR TroubleX27 Style

**Jami (Free!)**



Jami is a dance instructor.

**Kelly (Free!)**



Kelly is a pilates instructor.

**Lannette (Free!)**



Lannette is an account manager.

**Stifler's Mom (Free!)**



From American Pie

**Stacy's Mom (Free!)**



From Stacy's Mom

**Skyler White (Free!)**



From Breaking Bad

Special Note: Non-cannon MILFs will join as MILF Contestants if selected.



# MILF MANOR TroubleX27 Style

**Fran Fine (Free!)**



From The Nanny

**Peggy Bundy (Free!)**



From Married ... with Children

**Gemma Morrow (Free!)**



From Sons of Anarchy

**Jessica Pearson (Free!)**



From Suits

**Jackie Brown (Free!)**



From Jackie Brown

**Esme Cullen (Free!)**



From Twilight



# MILF MANOR TroubleX27 Style

**Gloria Delgado (Free!)**



From Modern Family

**Miranda Priestly (Free!)**



From The Devil Wears Prada

**Cersei Lannister (Free!)**



From Game of Thrones

**Lady Tremaine (Free!)**



From Cinderella 2015

**Lady Dimitrescu (Free!)**



From Resident Evil

**Balalaika (Free!)**



From Black Lagoon



# MILF MANOR TroubleX27 Style

**Harrison (Free!)**



Male Stripper (supposedly)

**Gabriel (Free!)**



Rock Star (supposedly)

**Jimmy (Free!)**



EMOTIONAL DAMAGE !!!

**Ryan (Free!)**



Software Engineer

**Ricky (Free!)**



United States Postal Service

**Pee Wee Herman (Free!)**



From Pee Wee Herman

Special Note: Non-cannon males will join as Son Contestants if selected.



# MILF MANOR TroubleX27 Style

**Stifler (Free!)**



From American Pie

**Jason (Free!)**



From American Pie

**Harold (Free!)**



From Harold & Kumar Go to White Castle

**Kumar (Free!)**



From Harold & Kumar Go to White Castle

**Beavis (Free!)**



From Beavis and Butt-head

**Butt-head (Free!)**



From Beavis and Butt-head



# MILF MANOR TroubleX27 Style

## DRAWBACKS



### Meta-Drawbacks

#### Mindwipe (+100 CP)

You will forget all specifics about this setting. Honestly, considering the manor's scandalous chaos, your memory loss likely won't matter much.

#### Warehouse Lockout (+200 CP)

You will find yourself unable to access your Jumper warehouse or any items from previous jumps. Frankly, in this particular setting, it's doubtful this limitation will truly matter.

#### Out of Jump Perks Lockout (+300 CP)

You are barred from utilizing any perks acquired from previous jumps, limited solely to your bodymod and whatever abilities you purchase specifically for this adventure. Given that this setting is a reality dating show focused on social dynamics, your usual array of powers and out-of-jump advantages truly won't matter much here.

Behold, the following drawback sections, where the stakes are as magnificently grand as the villas themselves, are indeed tiered drawbacks! But remember, my dear Jumper, only one exquisite drawback level may be selected. Just one from the three lavish tiers! For as we always say, true wealth is rarely obtained for free; *you simply must earn it!* 🍷



# MILF MANOR TroubleX27 Style

## The TLC Double down - MILF Contestants Only

Darlings, the producers know that bad publicity is better than no publicity, so they'll do what it takes to rake in the mountains of cash, as the world gawks at the villa's riotous, champagne-soaked chaos!

## The TLC Double Down (+100 CP - MILF Contestant)

Oh, darling, TLC's critics called it a scandal, so the showrunners are spiking the villa's cocktail with a dash of raunchy madness, tossing in challenges like "Guess Your Son's Bulge Blindfolded," leaving everyone blushing and giggling at the Freudian slip-ups! You'll navigate steamy tasks like flirty "Mother-Son Massage Marathons" or spicy charades with innuendo-laden prompts, turning the manor into a cheeky circus of winks and nudges. The cringe is deliciously awkward, but your allure can still dazzle through the playful, laugh-out-loud antics.

## The Temptation Tango (+300 CP - MILF Contestant)

Hold onto your garters, because TLC's doubling down on the raunch with a Freudian frenzy, throwing in wild challenges like "Oedipal Twerk-Offs" and "Naughty Blindfolded Fruit-Feeding" that have the villa roaring with embarrassed laughter! You're dodging risqué games like "Pin the Tail on the Son's Speedo" or "Erotic Whisper Challenges" where every suggestive purr sparks a mortifying mix of giggles and gasps, with cameras zooming in on every Freudian fumble. The world's cackling at the spicy chaos, but you'll need to keep your charm red-hot to shine through this hilariously cringeworthy mess.

## The Seduction Showdown (+600 CP - MILF Contestant)

TLC's critics lit a fire, so the showrunners have unleashed a raunchy, Freudian nightmare of epic proportions, with challenges like "Nude Freudian Slip-n-Slide" and "Mommy's Kinky Karaoke" that have the world howling and producers swimming in cash from the viral debauchery! You're thrust into absurdly explicit stunts like "Oedipal Body-Paint Battles" or "Guess the Son's Bedroom Scent" while draped in barely-there outfits, each moment a cringe-inducing, laugh-rioting spectacle of innuendo that leaves the internet in stitches. Your dignity's hanging by a thread as you flirt through this side-splitting, scandal-soaked insanity, but the global audience can't stop watching the uproarious, Freud-fueled trainwreck!



# MILF MANOR TroubleX27 Style

## Cougar and Cat fights - MILF Contestants Only

Darlings, when the lionesses of MILF Manor circle the male lion in this sultry savanna, their claws come out in a dazzling display of ferocious, champagne-fueled rivalry!

## Cougar and Cat Fights (+100 CP - MILF Contestant)

Darling, the villa's turned into a feisty feline fray, with female contestants baring their claws, fiercely guarding their sons while casting sultry eyes on yours, leaving the world gawking as producers cash in on the drama! Expect sharp-witted barbs and sly sabotage during flirty challenges, as these cougars hiss over cocktails, making every romantic pursuit a delicate dance of dodging their territorial swipes. You'll need your charm dialed up to eleven to keep the peace and your son out of their grasp in this spicy, jaw-dropping spectacle.

## Feline Frenzy (+300 CP - MILF Contestant)

The manor's a roaring jungle of jealousy, with MILF contestants morphing into aggressive tigresses, ruthlessly protecting their sons while plotting to snag yours, as global audiences watch with jaws dropped and producers' wallets fatten! From venomous poolside shade to outright sabotage in steamy hot tub challenges, these fierce felines turn every date into a dramatic showdown, forcing you to outmaneuver their catty schemes while keeping your son safe from their predatory charms. Your poise is pushed to the limit as you navigate this scandalous clash, with the world hooked on the chaos.

## Cougar Clash (+600 CP - MILF Contestant)

Good gracious, the villa's a savage cougar coliseum, where rabidly aggressive MILFs wage war, ferociously shielding their sons while hunting yours like starved lionesses, as the world's jaws hit the floor and producers rake in millions from the viral carnage! Expect screaming showdowns, sabotaged challenges, and near-brawls over candlelit dinners, with these divas shredding your reputation to keep you from their boys or steal yours in a frenzy of betrayal. You're thrust into a relentless storm of claws and chaos, fighting to protect your son and your dignity while the global audience can't look away from this scandal-drenched, cash-cow catastrophe!



# MILF MANOR TroubleX27 Style

## Perma boner - Son Contestants only

Darlings, in the dazzling den of MILF Manor's henhouse, who can fault a young fox for his spirited enthusiasm 🍆 amidst the radiant allure of these champagne-kissed goddesses?

## Perma Boner (+100 CP - Son Contestant)

Oh, you randy young buck, the villa's steamy vibes have you pitching a tent at the worst possible times! Your boners are impossible to hide, popping up during shirtless challenges or cozy chats by the pool, making those tight speedos your worst enemy as you try to play it cool. The MILFs can't help but smirk, and your awkward shuffles become the villa's running gag, but you'll still manage to flash that roguish grin through the embarrassment.

## Eternal Embarrassment (+300 CP - Son Contestant)

Good grief, you're a walking salute to the manor's spicy atmosphere, with boners that refuse to quit at every flirty glance or accidental brush of a MILF's hand! Those skin-tight outfits betray you during every dance-off or hot tub dip, turning you into a blushing beacon of hilarity that has contestants stifling laughs and cameras zooming in for the comedy gold. You're scrambling to keep your charm intact, but your relentless bulge is stealing the show, making every moment a side-splitting spectacle.

## Crotch Rocket (+600 CP - Son Contestant)

Mercy me, you're the villa's unintentional comedy king, sporting constant, unhide able boners and a hair-trigger that has you creaming your pants at the slightest provocation. A sultry wink, a breezy poolside gust, or even the sight of a suggestive cocktail! Every challenge, from sensual massages to steamy dance routines, ends in a mortifying wardrobe malfunction, with visible stains sparking howls of laughter from MILFs and crew alike, while producers cash in on your viral, pants-ruining antics. You're the manor's hapless heartthrob, desperately trying to salvage your dignity in this laugh-out-loud, scandal-drenched disaster!



# MILF MANOR TroubleX27 Style

## The Ultimate Chuunibyou - Son Contestants only

Darlings, in the opulent whirlwind of MILF Manor, eccentric souls embracing their "inner chuunibyou 🧙" flair soar to millionaire stardom, twirling their cosmic capes with nary a care for the world's bewildered stares!

### The Ultimate Chuunibyou (+100 CP - Son Contestant)

Oh, brave warrior of the villa, you've embraced a mild case of chuunibyou, convinced you're the destined "Dark Prince of Passion 🧙" destined to conquer hearts with your mystical aura. You can't help but sprinkle your speech with dramatic flair, striking poses during challenges and referring to your pecs as "The Twin Blades of Eros," causing second-hand embarrassment among the other contestants. The cringe is real, but it's manageable. Your antics mostly earn eyerolls and giggles, though you'll need to dial it back to avoid alienating every MILF in the manor.

### The Delusional Dreamweaver (+300 CP - Son Contestant)

Your chuunibyou has ascended to legendary levels, and now you're the self-proclaimed "Crimson Sovereign of Seduction 🧙," complete with an imaginary backstory involving a cursed amulet only you can wield. Every challenge sees you monologuing about your "arcane prowess" while attempting to hypnotize suitors with finger-guns and self-styled "shadow magic" dance moves, leaving the villa in a constant state of embarrassed laughter. The producers love the viral clips, but your delusional theatrics make it nearly impossible to be taken seriously, as contestants struggle to keep a straight face during your melodramatic confessions of love.

### The Epic Fantasy Frenzy (+600 CP - Son Contestant)

By the gods, you've become the "Eternal Overlord of the Cosmic Heartflame 🧙," and the entire world is cringing so hard at your antics that the internet is ablaze with memes of your cape-twirling, self-narrated "epic saga" in the villa. You interrupt dates to declare yourself the "Chosen One of MILF Manor," perform cringe-inducing rituals with pool floaties you call "sacred artifacts," and insist on battling rivals with imaginary psychic powers, making producers filthy rich from the viral trainwreck footage. The global audience can't look away from the sheer embarrassment, and every suitor is torn between fleeing in horror and staying for the absurd spectacle of your delusional grandeur.



# MILF MANOR TroubleX27 Style

## 24/7 House Party and Riot - For Resort Staff Only

Darlings, I'm utterly dazzled by the resort staff's impeccable professionalism, transforming the riotous bedlam into a sparkling spectacle of order, all while keeping the villa's opulent charm fit for the most decadent of television royalty!

### 24/7 House Party and Riot (+100 CP - Resort Staff)

The villa has transformed into a relentless party zone, with guests turning every night into a raucous bash. As a resort staff member, you're dealing with rowdy contestants who spill drinks, break furniture, and blast music until dawn, leaving you to clean up the chaos while maintaining your professional composure. You're required to work a few extra hours each shift to manage the mess, stretching your patience and energy, but it's just manageable enough to keep the manor's luxury facade intact. Though you'll need a strong coffee to survive the noise and antics.

### Poolside Pandemonium (+300 CP - Resort Staff)

The villa is now a full-blown riot zone, with guests escalating their rowdiness to epic proportions. Contestants throw wild, destructive parties, smashing glassware, defacing decor, and staging impromptu wrestling matches in the pool area, forcing you to work grueling overtime hours to restore order. Your tasks include wrangling drunken suitors, repairing broken hot tubs, and dodging flying objects while keeping the manor camera-ready, testing your endurance and professionalism to the brink as you struggle to maintain the illusion of paradise amidst the chaos.

### Relentless Revelry (+600 CP - Resort Staff)

The villa is an unrelenting maelstrom of debauchery, with guests unleashing chaos so wild that the La Paz Police are fielding nightly noise complaints. You're pulling exhausting double shifts, racing to fix shattered furniture, clean up after orgiastic parties, and hush screaming matches that echo across the coast, all while dodging belligerent contestants who treat the manor like a frat house. Your professionalism is pushed to its limits as you work around the clock to keep this disaster zone camera-ready, with the constant threat of police intervention looming over your every move.



# MILF MANOR TroubleX27 Style

## Clean up the Mess - Resort Staff Only

Oh, darlings, behold the unsung heroes of the villa, the resolute resort staff, whose dedication to tackling the ghastly is nothing short of a champagne-soaked triumph! With unwavering valor, they dive into the sticky, sordid chaos of spilled cocktails and unspeakable stains, transforming a veritable cesspool into a gleaming paradise fit for television royalty.

## Clean Up the Mess (+100 CP - Resort Staff)

As a member of the resort staff, your cleaning duties have taken a turn for the unpleasant. The villa's guests are particularly careless, leaving behind sticky spilled cocktails, half-eaten room service trays, and mysterious stains on every surface. Bathrooms are frequently clogged with unmentionable messes, and you're often tasked with scrubbing down poolside furniture after late-night parties that got out of hand. The messes are gross but manageable, requiring extra elbow grease and a strong stomach to keep the manor sparkling. Your professional demeanor is tested, but you'll get through it. Though you might want to invest in some heavy-duty gloves.

## Tangle Tidy-Up (+300 CP - Resort Staff)

The villa has become a cesspool of chaos, and you're the one stuck cleaning it up. Contestants seem to have no regard for hygiene, leaving used tissues, vomit from wild nights, and rancid food scraps scattered across the manor. Hot tub suites are a nightmare, with murky water and questionable organic residue that requires hazmat-level effort to sanitize. You'll find yourself wading through piles of soiled laundry and cleaning up after impromptu "romantic" encounters that leave behind bodily fluids in the most inconvenient places. The workload is grueling, and the grossness is enough to make even the most seasoned housekeeper gag, but you must maintain your professional facade while tackling these revolting tasks.

## Scandal Sweeper (+600 CP - Resort Staff)

The villa is a grotesque horror show, and you're the unlucky soul tasked with restoring order. Bedrooms are straight out of a nightmare, with used condoms strewn across floors 🤢, tangled in sheets, and even stuck to furniture, alongside other unidentifiable bodily fluids that defy cleaning solutions. The bathrooms are biohazards, with overflowing toilets and sinks clogged with hair and worse. Contestants' wild escapades leave behind rotting food, spilled lube, and a pervasive stench that lingers no matter how much you scrub. Every surface seems to harbor a new level of filth, and the production crew expects you to make it camera-ready daily, pushing your skills, endurance, and stomach to the absolute limit while you remain the invisible professional in this revolting chaos.



# MILF MANOR TroubleX27 Style

## Stop them from going to White Castle – Any Origin, Requires Harold and Kumar

Get ready to play babysitter in the Orchid House Baja, where Harold and Kumar from *Harold & Kumar Go to White Castle* have stumbled into the MILF Manor villa, their minds set on White Castle sliders. Your mission is to prevent them from leaving the premises, keeping them entangled in the villa's drama rather than chasing their burger dreams.

### A Mild Craving (+100 CP - Any Origin)

You face a manageable challenge as Harold and Kumar show up with a mild hankering for White Castle burgers, not quite the wild desperation of their movie days. Harold might mutter about needing “a quick bite” while Kumar suggests a “strategic snack break,” their eyes glazing over during a hot tub challenge. Their attempts are clumsy but not frantic ... yet.

### Escalating Burger Frenzy (+300 CP - Any Origin)

Now the stakes rise as Harold and Kumar's White Castle cravings grow crazier, pushing them to scheme more boldly. Harold starts whispering about “breaking for sliders” during a mother-son massage marathon, while Kumar plots a “covert burger run” with a stolen villa golf cart. You must prevent both from leaving using whatever distractions you can think of. Their antics escalate, Harold might stash a map under his towel, and Kumar could try bribing a resort staffer. Success requires outsmarting their stoner logic.

### Full-On White Castle Madness (+600 CP - Any Origin)

Brace yourself for the full *Harold & Kumar Go to White Castle* insanity as their burger obsession hits movie-level chaos. Harold and Kumar are relentless, with Harold shouting “I can smell the sliders!” during a blindfolded fruit-feeding challenge and Kumar rigging a vine swing to “escape to White Castle,” yelling “freedom fries!” You must stop *both* from bolting, facing their wildest schemes. You'll need to deploy every trick to keep them in the villa. Success means they stay, but the manor becomes a laugh riot, with producers cashing in on the absurdity.



# MILF MANOR TroubleX27 Style

## Help Them Finally Score - Any Origin, Requires Beavis and Butt-head

Oh, you sly devil, stepping into the steamy chaos of MILF Manor to play Cupid for Beavis and Butt-head, those snickering, score-obsessed knuckleheads straight out of the '90s! 😏

Special Note: A MILF Contestant cannot do this herself and she has to help them score with other MILF Contestants.

### Help Beavis or Butt-head Finally Score (+100 CP - Any Origin)

Darling, the villa's abuzz with your outrageous task: get one of these chuckleheads, Beavis or Butt-head, laid with a ravishing MILF Contestant, and oh, what a riot it'll be! These two are strutting around in their tight speedos, giggling "huh huh huh" at every curvy cougar, their eyes popping like cartoon wolves. Beavis might scream "Boioioing!" during a hot tub challenge, while Butt-head smirks, "Hey, baby, wanna, like, score?" The cringe is manageable, with awkward winks and accidental innuendos stealing the show, but you'll need to keep their horniness from derailing into a poolside disaster. Success means one of them stumbles into a steamy date, leaving the villa giggling and the producers cackling at the viral gold.

### Help Beavis and Butt-head Finally Score (+300 CP - Any Origin)

Hold onto your martini, darling, because now you're playing matchmaker for both Beavis and Butt-head, and the villa's about to become a laugh-soaked circus! These two are a walking disaster, snickering "he he he" while trying to impress MILFs with lines like "I'm, like, totally gonna score, huh huh" (Butt-head) or "My bung hole is ready for love!" (Beavis). Your mission is to guide them through spicy challenges where their attempts at seduction, think Beavis humping the air or Butt-head flexing his scrawny arms with spastic head-banging, spark howls of laughter from contestants. The cringe dial's cranked up, with cameras zooming in on their failed pickup lines and accidental pratfalls into the pool, making you the unsung hero of this hilarious, meme-fueled catastrophe.

### Help Beavis and Butt-head Finally Score: Cornholio Edition (+600 CP - Any Origin)

Darling, you've signed up for the ultimate cringe-fest, tasked with getting both Beavis and Butt-head to score with MILFs while they're lost in their most unhinged personas yet! Beavis is now the "Great Cornholio" full-time, shirt yanked over his head, ranting about "needing TP for my bung hole" and declaring himself the "High Priest of Passion" during every challenge, from blindfolded fruit-feeding to kinky karaoke. Butt-head, meanwhile, styles himself "Lord Butt-head, Ruler of Chicks," sporting a fake leather jacket (borrowed from the villa's costume closet



# MILF MANOR TroubleX27 Style

) and monologuing about his “dark rebel powers” while striking poses that look like a constipated Elvis. The villa is now a global laughingstock, with producers swimming in cash from viral clips of Beavis’s “Cornholio mating dance” and Butt-head’s “seductive” nacho-eating.

You’ll need every ounce of charm to convince MILFs that these two are diamond-in-the-rough heartthrobs. Success means both score but the internet will never recover from this trainwreck!

---

## CONCLUSION



Congratulations, darling Jumper, for navigating the scandal-soaked splendor of MILF Manor with unparalleled panache, whether you dazzled as a ravishing MILF Contestant who found her heart’s desire, strutted as a Son Contestant who scored with a sultry siren, or toiled as the steadfast Resort Staff enduring the riotous chaos of it all!

Now, bask in your triumph and choose your next adventure: GO HOME (+500) to your own world, STAY (+1000) in this opulent Mexican paradise to revel in more champagne wishes and caviar dreams, or MOVE ON to conquer new realms of decadent delight!

The multiverse awaits, darling, and it truly is fabulous!



# MILF MANOR TroubleX27 Style

## ADDENDUM



If you want to see Youtube clips of this botox trainwreck [here's the link](#). **Warning:** It's worse than Keeping Up with the Kardashians.

If you select a non-cannon MILF companion, the “universe” will import the most appropriate Son Contestant for the “sake of balance”. Example is if you get Cersei Lannister then Joffry Baratheon joins the show as a Son Contestant (no perks). Post-jump it's only the non-cannon MILF companion who joins Jumper. The same mechanism applies to non-cannon Son companions when selected.

Slight adjustment to the *TroubleX27* style: selected companions of the opposite gender are in love with you while selected companions of the same gender are super friendly to you (bro!).

The real winners of this Reality Show are the producers raking in the cash. 💰💰

Other jump chain works by /u/randaReps with **MILF count!**

[Failure Frame](#) 2 MILFS! 😬

[Scarface](#)

[Wandering Witch: The Journey of Elaina](#) 3 MILFS! 😬

[The Book of Mormon Broadway Musical](#)

[Space: Above and Beyond](#)

[Downton Abbey](#) 2 MILFS! 😬

[Hince-P's The Perfect Cell](#) (nsfw) 3 MILFS! 😬

[Dilbert](#) (in progress)

[Full Metal Jacket](#)

[Inferno of Elegance: A Flamenco Odyssey](#)

[Dos Equis: The Most Interesting Man in the World](#)

[Married . . . with Children](#) 1 MILF! 😬

[The Jerry Springer Show](#)

[Keeping Up with the Kardashians](#) 1 MILF! 😬

[Cryptobros: The Blockchain Adventure](#)



# MILF MANOR TroubleX27 Style

