

Kaijin Kaihatsubu no Kuroitsu-san 0.1

By saiman010



Introduction:

Welcome to a parallel world jumper! This world is nearly identical to the one you come from, with one significant difference: here, the popular Japanese superhero genres—Super Sentai, Magical Girls, and Kamen Rider—are not just fictional shows but a real part of everyday life. Heroes and villains from those shows exist, shaping the fabric of society.

It's not uncommon to see a group of D-rank heroes battling a monster-of-the-week on your commute home from work. These events are so normalized that they rarely disrupt the flow of daily life, and most people carry on with their routines, pausing only to glance at the occasional explosion or dramatic transformation sequence.

Despite the sheer number of evil organizations, they adhere to a curious set of unspoken rules:

1. No Civilian Harm: Villains cannot use their powers or attack civilians under any circumstances.
2. Non-Interference: Organizations do not interfere with one another's plans or targets.
3. Weekly Challenges: Each week, these groups are expected to train and create a new monster to challenge a hero of their choice. Alternatively, they might focus on overcoming a hero that has been targeting their organization.

In this world, heroes are ranked by their abilities and achievements. Higher-ranking heroes are treated as celebrities, with their own merchandise, TV appearances, and fan clubs. They are admired and revered, but their responsibilities extend far beyond just fighting villains—they are icons of hope, symbols of justice, and central figures in the entertainment industry.

You are granted 1,000 CP to navigate and explore this vibrant, action-packed world. Use it wisely and immerse yourself in the extraordinary lives of heroes and villains as you decide your own path!

Starting Location:

Choose any location in Japan, and you'll find that the world here feels both familiar and extraordinary. Whether it's a quiet countryside village, a bustling urban metropolis, or even a fictional town brought to life, the rules of this parallel world apply universally. Heroes and villains, clad in vibrant costumes, are a natural part of the scenery. It's not unusual to see a magical girl flying through the sky while you're walking to the grocery store or a masked rider speeding past on a futuristic motorcycle as they chase a mechanical kaiju. This blending of the mundane with the fantastical has created a culture where extraordinary events are just another part of life.

Origins:

You can change your gender for free and your age is completely up to you.

Affiliation

Here choose one as your affiliations: are you a hero, a villain, or neither?

Hero

You are the classic transforming hero that stands for justice, hope, and protecting the innocent. Equipped with a unique transformation device, you gain extraordinary powers and a dazzling suit that showcases your heroic identity. Your days are filled with battling monsters-of-the-week, thwarting the schemes of villainous organizations, and inspiring the public with your courage. Whether you're fighting in the spotlight or quietly protecting those in need, you represent the ideals of heroism in a world where everyone looks up to the shining stars of justice. The journey is tough, but every battle is a step closer to a safer, brighter future.

Villain

You are a member of one of the many evil organizations vying for world domination. Your group, though sinister in reputation, operates with flair and creativity, crafting unique monsters and executing elaborate plans to challenge heroes. Each week, your organization gathers to brainstorm new strategies, train monsters, and refine your equipment to outmatch your heroic foes. While your ultimate goal is conquest, the unspoken rules of this world mean your battles are more theatrical than malicious, making you an integral part of the delicate

balance that keeps this world's heroes at their peak. Victory is sweet, but the challenge and spectacle are just as rewarding.

Neutral

You exist outside the clash of heroes and villains, carving out your own path in this extraordinary world. Perhaps you're a reporter documenting battles for the public, a scientist creating technology that both sides rely on, or even an entrepreneur profiting from hero and villain merchandise. Your unique position lets you work with both sides, navigating the gray areas between good and evil. Whether you're mending a hero's gear, supplying materials to villainous groups, or simply watching the action unfold, you are a vital part of this world's ecosystem, playing a subtle but significant role in the never-ending battle of light versus darkness.



Affiliation Job

Here you will receive your position or job based on your affiliation. Jobs that are part of the same affiliation will receive one for free, while other jobs that come from the same affiliation will cost you 200 CP to unlock. Jobs of other affiliations will cost 400 CP unless stated otherwise. Also any origin can be made into a drop in if you wish.

Hero

Super Sentai

You are now part of a team of colorful heroes who fight together in perfect synchronization, each member representing a different strength, skill, or specialty. Known for your teamwork and camaraderie, your group specializes in battling organized villain factions, often clashing with their foot soldiers and monsters in choreographed battles filled with dazzling special effects. When a defeated monster returns as a giant threat, your team has the unique ability to summon powerful mecha—robots that combine to form a colossal warrior capable of handling kaiju-sized foes. Your missions are a blend of strategy, teamwork, and spectacular battles that highlight the strength of unity.

Kamen Rider

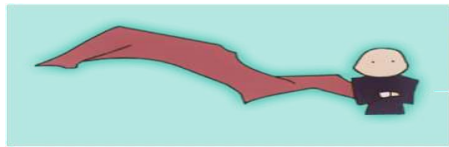
You are a lone hero who fights not for fame or recognition but for your personal code of justice. Unlike other heroes who work in teams, you often face your challenges independently, relying on your wit, strength, and powerful transformations to overcome adversaries. Your transformation device grants you insect-themed abilities and forms, symbolizing adaptability and resilience. Whether combating monstrous enemies or exposing shadowy conspiracies, your battles are deeply personal, and your motivations often lie in uncovering truths, protecting loved ones, or seeking redemption. You are a solitary warrior, standing strong against the odds with unwavering resolve.

Ultra

You are a hero of immense stature, tasked with protecting humanity from colossal kaiju monsters that threaten cities and lives. Unlike other heroes who fight on a human scale, your battles take place on a massive stage, with entire landscapes serving as your battlefield. Your primary goal is not to destroy these creatures but to capture and relocate them to uninhabited areas where they can live without harming humans. Only when relocation is impossible do you resort to eliminating the threat. Your powers include energy-based attacks, incredible physical strength, and the ability to grow to towering heights, making you humanity's ultimate line of defense against gargantuan dangers.

Magical Girl

You are one of the many sweet and dazzling heroes who draw their powers from the magic of hope, love, or another positive force. Your transformation grants you a stunning and adorable outfit, filled with charm and vibrant colors. Regardless of gender, this role will always transform you into a girl, emphasizing grace and cuteness as part of your magical persona. Your specialty lies in purifying monsters, returning them to their original forms—whether human, animal, or something else entirely. Additionally, you excel in combating creatures with corrupting influences, using your magic to heal and restore balance. With your cheerful spirit and powerful magic, you bring light to even the darkest battles.



Villains

Grunts

Grunts, or minions, are the backbone of any evil organization, serving as its foot soldiers. While individually weak and not always reliable when faced with heroes, your greatest strength lies in sheer numbers. You and your fellow grunts swarm the battlefield, overwhelming opponents with coordinated attacks, clever distractions, and relentless persistence. Your primary role is to wear down heroes, giving your organization's higher-ranking members and monsters the time and opportunity to execute their plans. Though you may lack personal glory, your collective efforts are crucial to your organization's operations.

Monster Creator

As a monster creator, your sole focus is the development of powerful creatures to combat the heroes who oppose your organization. How you create these monsters depends entirely on the theme of your group, your resources, and your own unique powers or scientific genius. Whether you're splicing DNA, using dark magic, or crafting biomechanical hybrids, your creations are tailored to exploit the heroes' weaknesses and challenge their abilities. You are the mind behind the monster-of-the-week, ensuring each encounter tests the limits of the heroes while showcasing your creativity and ingenuity.

Field Agent

Field agents are the elite forces of your organization, operating directly on the front lines. Unlike grunts, your strength and skills place you above the average foot soldier, allowing you to face heroes head-on without fear of immediate defeat. Your duties go beyond combat—you gather intelligence on heroes, report back to your superiors, and command the grunts in battle. You are a crucial link between the higher-ups and the action in the field, ensuring your organization's strategies are effectively executed. Your rank guarantees that you won't be treated as expendable, making you a respected and vital member of the team.

General [400 CP for Villain/600 CP for Others]

As a general, you are one of the highest-ranking members of your organization, commanding immense respect and wielding significant authority. Your combat abilities are unparalleled, making you a formidable foe even for the strongest heroes. Beyond your fighting prowess, you enjoy the perks of your position, including a generous salary, access to the best resources, and influence over the organization's strategies and decisions. Your role is the envy of many, as you stand at the top of the hierarchy, orchestrating battles, leading operations, and embodying the pinnacle of villainous excellence.



AnimeNewsNetwork.com

Neutral

Technical Crew

You are a vital member of the organization's support staff, responsible for creating and maintaining the equipment used by its members. Whether you are a hero designing advanced gadgets and weapons to combat evil or a villain crafting devious devices to outwit the good guys, your expertise ensures the organization has the tools needed to succeed.

Clean-Up Crew

You are part of the unsung heroes—or villains—of the clean-up crew, tasked with handling the aftermath of battles and operations. Whether it's repairing property damage, managing public relations, or ensuring no evidence of your organization's involvement is left behind, your work is critical to maintaining order and secrecy. Operating in the shadows, you make sure that life can return to normal for civilians while keeping the organization's reputation intact, whether it's for heroic inspiration or villainous subterfuge.

Franchise Developer

Your role is to generate income and public interest for your organization through entirely legal business ventures. From selling merchandise and running themed cafes to managing entertainment rights and licensing deals, you bring in the revenue that keeps the organization running. Whether you're a hero creating a media empire or a villain funding secret projects through seemingly innocent enterprises, your creativity and entrepreneurial skills are key to your group's financial stability and growth.

Race

Here choose one race that you will originate from.

Human [Free]

As a human, you are the standard baseline of this world. Nothing inherently sets you apart physically or mystically, but your potential for growth is immense. With determination, intelligence, and adaptability, you can carve out a path for yourself, whether as a hero, a villain, or something in between. Being human allows you to blend seamlessly into society, making it easier to operate in both public and secret spheres.

Pixie [100 CP]

As a pixie, you are a small, mischievous being with wings that grant you the ability to fly. You are naturally attuned to magic and possess a playful yet cunning personality. While you may lack physical strength, your agility, magical tricks, and enchanting aura make you a unique presence in any situation. Your small size allows you to maneuver through tight spaces and evade larger opponents effortlessly.

Orc [100 CP]

Orcs are known for their brute strength and resilience. As an orc, you possess immense physical power and endurance, making you a fearsome combatant in any brawl. Though often underestimated due to stereotypes, you can also showcase surprising intelligence and tactical thinking. Orcs excel in roles that require raw power and a fighting spirit, whether as a hero's stalwart ally or a villain's enforcer.

Oni [200 CP]

As an Oni, you embody a fearsome blend of strength, magic, and intimidation. Known for your towering stature, horned appearance, and innate mystical abilities, you command respect and fear. Your kind often wields elemental powers such as fire or lightning, making you a versatile asset in battle. Whether you choose to embrace your destructive heritage or defy expectations with a gentler path, your presence is unforgettable.

Merfolk [200 CP]

As a Merfolk, you are a being of the water, possessing the ability to breathe underwater and swim with incredible speed and grace. Your fish-like tail allows you to maneuver effortlessly in aquatic environments, and you can manipulate water to some degree, shaping it for offensive or defensive purposes. Merfolk are also known for their enchanting voices, which can mesmerize or soothe those who hear them. While you thrive in oceans, rivers, and lakes, you can temporarily transform your tail into legs to walk on land, blending into human society when necessary.

Vampire [400 CP]

As a vampire, you are a being of the night, exuding charisma and danger. Your supernatural strength, speed, and charm make you a formidable foe or ally. You also possess regenerative abilities and can mesmerize others with your gaze. However, you must contend with weaknesses such as sunlight and a reliance on blood to sustain your power. Despite these challenges, your eternal youth and mystique make you a captivating force.

Werewolf [400 CP]

As a werewolf, you are a shapeshifter with the ability to transform into a powerful wolf-like creature, especially under the full moon. Your heightened senses, incredible speed, and raw physical strength make you a natural predator. While you may struggle with controlling your transformations or instincts, your dual nature as human and beast grants you a unique perspective and abilities unmatched by most.

Witch [600 CP]

As a witch, you are a master of the arcane arts. Your vast magical knowledge and versatility allow you to manipulate reality in ways few can match. Whether brewing potions, casting spells, or summoning familiars, your powers make you a force to be reckoned with. Witches are rare and often shrouded in mystery, making your presence both revered and feared. Your abilities are limited only by your imagination and training.

Dragon [600 CP]

Dragons are legendary creatures of immense power, and you can choose to embody either a Western or Eastern dragon. As a Western dragon, you are a massive, fire-breathing beast with scales that rival steel and wings that carry you to the skies. As an Eastern dragon, you are a serpentine being of wisdom and magic, capable of controlling elements such as water or wind. Both forms grant you unmatched strength, durability, and a commanding presence.

Kaiju [800 CP]

As a Kaiju, you are a colossal being of destruction, towering over cities and mountains. Your size and power are unmatched, making you a living catastrophe to those who stand in your way. Whether your abilities include atomic breath, immense physical strength, or control over natural disasters, you are a force of nature. Though your sheer scale limits your subtlety, your raw might ensures you are a significant player in any scenario.

Perks:

Here perks with the same origin are discounted with 100 CP ones being free.

General

Looks of Anime [Free]

You now radiate the charm and beauty of an anime protagonist. On a universal scale, you're at least an 8 out of 10 in the looks department, turning heads wherever you go. Whether you want to be cute, elegant, sexy, or adorable as your primary attribute is entirely up to you.

If you are non-human, you gain the ability to take on a humanoid form indistinguishable from other humans, allowing you to blend seamlessly into society while retaining your original form when desired. This ensures that you can still be your non-human self without compromising on social interactions.

Not to Harm Civilians [Free/100 CP]

You gain an intuitive sense of how to wield your powers, skills, and abilities in ways that ensure civilians remain unharmed. Whether you're a hero battling a monster, a villain enacting your schemes, or a neutral party caught in the crossfire, you instinctively know how to minimize collateral damage in cities, towns, or any populated area.

In this world, this perk is free, reflecting the unspoken agreement among factions to prioritize civilian safety. However, if you wish to carry this ability to future worlds, it costs 100 CP, allowing you to maintain your mastery of precision and control regardless of the circumstances.

Not to Start Wars [Free/100 CP]

You gain an innate understanding of diplomacy and restraint, ensuring you don't unintentionally provoke conflicts or wars with factions you're not interested in opposing. Whether you're dealing with rival organizations, neutral groups, or even potential allies, you can navigate interactions with tact and awareness to avoid unnecessary escalation.

In this world, this perk is free, aligning with the unspoken rules that govern interactions between heroes, villains, and neutrals. However, if you wish to take this valuable skill to other worlds, it will cost 100 CP, granting you the ability to maintain peaceful relations and avoid unintended hostilities in any setting.

Weekly Challenges [Free/100 CP]

You now possess the discipline and focus to engage in a structured routine of preparation, ensuring you're ready to face your challenges each week. In this world, this means dedicating yourself to preparing for your battles, whether you're a hero, villain, or neutral party. You'll find yourself naturally planning, training, or strategizing to ensure you're fully equipped to deal with your enemies when the time comes.

In this world, this perk is free, reflecting the weekly cycle of conflict inherent to its structure. If you wish to take this habit of disciplined preparation to other worlds, it will cost 100 CP, giving you the ability to consistently organize and ready yourself for any recurring challenges.

Theme [100 CP Each]

Choose a thematic flair that defines the aesthetic, style, and inspiration for your abilities, transformations, and overall presence. This is primarily cosmetic but adds a sense of identity and uniqueness to your powers and persona, allowing you to stand out and embrace a cohesive motif.

The first theme is free, and you may purchase additional themes for 100 CP each. If you have multiple themes, you can assign different ones to specific powers or forms as you see fit, creating a versatile and dynamic style. Below is the list of available themes:

Adventure

Evokes a spirit of exploration and excitement. Powers might include tools like maps, compasses, or grappling hooks, and your aesthetic could resemble an adventurer, treasure hunter, or explorer.

Angels

Divine and ethereal, with wings, halos, and light-based powers. Reserved for heroes, often exuding purity and justice.

Devils

Dark and menacing, featuring horns, tails, and powers rooted in chaos or fire. Exclusive to villains, embodying temptation or destruction.

Animal

Channel the traits of a chosen real or mythical animal. A tiger-themed hero might have incredible strength and agility, while a phoenix-themed villain could wield fiery, reborn-from-the-ashes powers.

Astronomy

Inspired by celestial phenomena like stars, planets, and constellations. Expect cosmic beams, glowing auras, and an aesthetic that feels like it's straight from the night sky.

Astrology

Harness the traits of the zodiac signs and horoscopes. A Sagittarius-themed character could have bow-like attacks, while a Pisces-themed one might wield water-based powers.

Space

Dive into the infinite universe with powers inspired by black holes, supernovas, or the vacuum of space. A futuristic and sci-fi edge defines this theme.

Board Games

Playful and strategic, with abilities modeled after chess pieces, dice rolls, or Scrabble tiles. You might summon a knight piece to charge into battle or unleash a devastating checkmate attack.

Card Games

Your powers revolve around cards, whether it's poker, magic cards, or tarot. Think throwing razor-sharp playing cards or summoning creatures from a magical deck.

Tabletop Games

Draw from D&D or other tabletop RPGs, incorporating dice-based powers or the ability to summon fantasy creatures, traps, or spells.

Candy

Sweet and colorful, with abilities that create sticky traps, sugary explosions, or chocolate-based constructs. Your aesthetic might resemble a walking candy shop!

Colors

Focus on a single color or a palette, with powers reflecting their meaning or properties (e.g., fiery red, icy blue, or healing green). Your style might shift depending on the mood or the battle.

Art

Your powers manifest as creative expressions like paint splatters, sculpture constructs, or brushstrokes that turn into attacks. A truly artistic flair defines you.

Comic Books

Classic superhero aesthetics with bold, exaggerated abilities. Think flashy punches with "BOOM!" effects or transformations that scream comic book nostalgia.

Video Games

Retro or modern, your powers emulate gaming mechanics, like pixelated attacks, health bars, or even "pause" and "reset" abilities. Perfect for breaking the fourth wall.

Cowboys

Embody the Wild West with gunslinger aesthetics, lasso attacks, and a rugged attitude. Perfect for duels and rootin'-tootin' adventures.

Dinosaurs

Raw prehistoric power! Transform into or summon dinosaurs, wield fossil-based weapons, or shake the ground with earth-shattering roars.

Dreams

Surreal and otherworldly, your powers feel like stepping into a lucid dream. Use illusions, create dream-like constructs, or trap foes in a nightmarish realm.

Gemstones

Harness the beauty and power of precious stones. Create dazzling barriers, sharp crystal shards, or armor made of unbreakable gems.

Halloween

Spooky and fun, your aesthetic channels creatures like vampires, werewolves, or mummies. Your powers might summon cobweb traps or ghostly apparitions.

Music

Rhythmic and kinetic, your abilities revolve around sound, dance, or motion. Create shockwaves with drum beats, stun enemies with a hypnotic dance, or move gracefully like a symphony.

Plants

Flourish with plant-based powers like entangling vines, poisonous spores, or healing herbs. Your aesthetic feels connected to the earth and its beauty.

Ocean

Inspired by the depths of the sea, with aquatic powers like summoning waves, water creatures, or controlling coral constructs. Perfect for oceanic heroes and villains alike.

Seasons

Channel the power of spring, summer, fall, or winter. Bloom with springtime growth, scorch with summer heat, summon autumn winds, or freeze with winter frost.

Board Games

Strategic and playful, your powers revolve around classic board game elements. Create shields from checkerboards, set traps like chess pieces, or overwhelm enemies with armies of dominoes. Your aesthetic could be vintage, reflecting the timeless appeal of board games.

Gemstones

The beauty and hardness of precious gems are the core of this theme. Powers might include creating armor of diamond strength, firing emerald shards as projectiles, or channeling energy through glowing crystals. You radiate elegance and resilience.

Mana Pool [200 CP/Free for Magical Girls & Witches/ Discounted for General]

You possess a deep reservoir of mana, the energy source for magical abilities. Your mana pool is slightly larger than average but twice as dense, allowing you to perform complex spells, maintain powerful enchantments, or sustain prolonged magical battles without running dry. Additionally, your mana regenerates faster than normal, ensuring you're always ready for another round of spellcasting.

You also gain a sixth sense for detecting magical energy in your surroundings, making it easier to locate enchanted objects, ley lines, or other magic users.

Ki Pool [200 CP/Free for General]

Your body brims with ki, the life energy that fuels martial arts techniques and physical enhancements. This perk grants you a vast ki pool, enabling you to perform high-energy techniques like energy blasts, enhanced speed, or defensive barriers without quickly exhausting yourself.

You also gain heightened control over your ki, allowing for precise energy manipulation. With practice, you can strengthen your physical attacks, improve stamina, and even detect the ki signatures of others, making you a formidable martial artist.

Weapon Proficiency [200 CP Each]

You are a master of a chosen weapon type, able to wield it with unparalleled precision, grace, and power. Whether it's a traditional weapon like a sword, spear, or bow, or a more modern tool like guns, or even unconventional options such as fans, yo-yos, or umbrellas, your chosen weapon feels like an extension of your body. As Hero or Villain you receive one for free

Your mastery goes beyond simple usage. You can execute advanced techniques, such as chaining complex combos, utilizing the environment to enhance your attacks, or even improvising with substitute items resembling your weapon. For instance, a sword master could cut through steel with ease, while a fan user might create gale-force winds.

The destructive power of your attacks is amplified significantly. Even with a simple strike, you can cause considerable damage to your surroundings or pierce through defenses that would ordinarily withstand similar weapons. If your weapon

is enhanced with magic, technology, or unique materials, your proficiency allows you to draw out its full potential, making it a devastating tool in your hands.

Additionally, your training includes defensive maneuvers specific to your weapon type. You can block, parry, or deflect incoming attacks with perfect timing, maintaining your offensive momentum. If needed, you can repair, maintain, or modify your weapon, ensuring it is always in peak condition.

This perk can be purchased multiple times, allowing you to specialize in additional weapon types, turning you into a versatile combatant capable of adapting to any battle scenario.

Classes [300 CP Each]

This list includes the foundational skills and archetypes used by most heroes and villains in this world during battle. These classes define your combat style and abilities, granting you mastery over specific techniques and approaches. Heroes and villains may receive one of these classes for free as part of their roles. Generals also receive another one for free.

Miko

Miko is a revered warrior from Japan, entrusted by the Shogun with the sacred duty of protecting humanity from the menace of evil demons. Wielding a masterfully forged katana and the mystical art of talisman magic, the Miko's power is both elegant and devastating. Talisman magic, an ancient tradition of the land, involves the creation of paper charms inscribed with runes and symbols imbued with spiritual energy. Each talisman acts as a conduit for spells that cleanse, seal, or destroy, enabling the Miko to unleash powerful magic with a mere flick of the wrist. Unlike traditional magic that drains mana during use, these talismans are pre-charged with energy, making them ideal for rapid, efficient combat. Whether purifying a cursed battlefield or delivering swift, lethal strikes, the Miko's presence embodies both grace and unyielding determination.

Dark Templar

Dark Templar walks the path of vengeance and destruction, wielding a greatsword infused with dark power. Unlike the noble Paladin, the Dark Templar draws strength from hatred and retribution, channeling Unholy Smite to obliterate foes aligned with the divine. Their strikes are imbued with malevolent energy, devastating enemies and leaving divine beings in ruin. Cloaked in an aura of dread, the Dark Templar's very presence saps the will of their enemies, forcing weaker opponents into paralyzing fear or desperate pleas for mercy. Their mastery over both fear and brute force allows them to dominate battles effortlessly, often securing victory without needing to exert their full strength.

Berserker

Berserker is a force of primal fury, shaped by years of grueling training in the wilds, wielding a greataxe with unmatched ferocity. Each strike they deliver carries the force to shatter the ground, creating craters as proof of their raw power. The Berserker has formed a bond with a powerful spirit—be it Storm, Strength, or Beast—gaining access to a specialized rage that sustains them in combat. As long as they remain locked in battle, dealing or taking damage, their rage amplifies their strength and resilience, making them nearly impervious to physical harm. However, this rage comes at a cost: while consumed by it, the Berserker cannot wield magic, focusing entirely on unleashing devastating physical assaults. Their presence on the battlefield is that of an unstoppable juggernaut, embodying chaos and destruction.

Entertainer

Entertainer graces the battlefield with elegance and artistry, wielding the power of music and dance. Though seemingly out of place, the Entertainer's role is pivotal, infusing the battlefield with hope and inspiration. Their graceful movements uplift the spirits of allies, boosting morale and enhancing combat effectiveness. Mastery of a musical instrument allows the Entertainer to weave spells through melody, inducing status ailments such as sleep and paralysis upon enemies. These effects disrupt enemy formations and create openings for allies to strike. Far from a traditional warrior, the Entertainer's artistry serves as both a strategic asset and a symbol of resilience, using beauty and melody to turn the tide of battle.

Thief

The Thief excels in stealth, agility, and cunning, making them formidable in combat and invaluable for infiltration. They utilize quick, lethal dagger strikes aimed at vital points to cripple or defeat foes. Thieves are adept at exploiting enemy blind spots, disarming traps, and creating diversions. Advanced thieves may use tools like smoke bombs, caltrops, or poison-tipped weapons to gain an advantage. Their high evasion and acrobatic movements make them hard to pin down, while their ability to pick locks and steal valuable items adds versatility outside of combat.

Mage

Mages are magicians of the west command the elements and arcane forces, using their vast knowledge to unleash powerful spells. They can conjure fireballs, lightning strikes, ice shards, and other elemental attacks to devastate enemies. High-level mages can cast area-of-effect spells, summon creatures, or create barriers for protection. While physically fragile, they compensate with teleportation or defensive wards to evade attacks. Mana management is key for mages, as their power relies on sustaining their magic reserves during battle. Master mages can weave spells together for devastating combos or tailor their magic to exploit an opponent's elemental weaknesses.

Priest

The Priest the Miko of the west and is a cornerstone of any team, offering unmatched healing and support abilities. They mend wounds, cure ailments, and provide buffs to strengthen allies. Their holy magic also allows them to damage undead and demonic foes. Advanced priests can summon protective shields, redirect incoming damage, or use wide-range healing spells to aid an entire party. Outside combat, priests excel in rituals and blessings, bolstering morale and ensuring the team's survival in prolonged battles or dangerous expeditions.

Fighter

The Fighter is a martial arts master, combining speed, strength, and skill in hand-to-hand combat. They use punches, kicks, and grapples to subdue enemies, with techniques that focus on exploiting weaknesses or breaking defenses. Fighters are highly mobile, using dodges and counters to avoid damage while delivering devastating counterattacks. Advanced fighters can channel their inner energy (ki) into their strikes, unleashing powerful shockwaves or performing techniques that combine physical and elemental damage. Their disciplined training gives them enhanced durability, allowing them to fight for extended periods without tiring.

Hunter

Hunters are long-range specialists who excel in tracking and defeating enemies from a distance. Their mastery of bows and ranged weapons allows them to hit targets with pinpoint accuracy, even in motion. Hunters can use specialized arrows or ammunition, such as explosive, poisoned, or elemental shots, to adapt to different foes. They are also skilled in setting traps, camouflaging themselves, and reading enemy movements. In group settings, hunters act as scouts and snipers, weakening enemies before they reach the frontlines. Advanced hunters may tame creatures or summon companions to aid them in battle.

Gunman

The Gunman is a ranged combat specialist who wields dual firearms with precision and flair. Their rapid-fire attacks and agile movements allow them to maintain pressure while avoiding close-quarters combat. Gunmen can use specialized ammunition, such as incendiary, piercing, or explosive rounds, to adapt to different situations. Advanced gunmen may wield customized weapons, such as elemental guns or magically enhanced firearms, adding versatility to their arsenal. Their ability to keep enemies at a distance while dealing continuous damage makes them a formidable force on the battlefield.

Paladin

The Paladin is a beacon of hope and resilience on the battlefield, blending martial and healing arts. They wield broadswords with grace and power, delivering devastating strikes while protecting their allies. Paladins can imbue their weapons with holy light or elemental energy to increase their effectiveness against specific foes. Advanced paladins can create auras that heal allies, reflect damage, or bolster defenses. Their unwavering dedication to justice and their ability to sustain themselves and their team make them key figures in prolonged battles.

Ninja

The Ninja is a master of stealth, agility, and precision, using a variety of weapons and techniques to incapacitate enemies. Ninjas excel in guerilla tactics, attacking from the shadows and vanishing before the enemy can retaliate. They can throw shurikens, lay traps, or use ninjutsu to create illusions and distractions. Advanced ninjas gain access to elemental or summoning techniques, allowing them to manipulate their environment or call upon allies to assist in battle. Their adaptability and unpredictability make them lethal and elusive adversaries.

Cyborg [400CP]

The Cyborg transformation is a profound evolution, fusing advanced technology with human potential, leaving you 70% machine and unlocking unparalleled abilities. Your body is now a marvel of cybernetic engineering, granting you enhanced strength, speed, durability, and sensory perception beyond the limits of flesh. Every movement is precise, calculated, and efficient, whether you're engaging in high-speed combat or performing delicate operations. Your cybernetic frame houses integrated weapon systems, from retractable energy blades to built-in plasma cannons, allowing you to engage enemies with lethal versatility.

Furthermore, your mechanical enhancements come with advanced processing power, enabling you to analyze battle scenarios in real-time, predict enemy movements, and execute complex strategies with machine-like precision. Your sensory systems are finely tuned, granting you enhanced vision that can switch between thermal, night vision, and magnified targeting modes, while your auditory sensors pick up the faintest sounds, ensuring no detail escapes your notice. You are a walking arsenal, capable of adapting to any combat situation with on-the-fly upgrades and weapon deployments.

In addition to combat prowess, your cyborg body boasts superior resilience. Your synthetic components are crafted from reinforced alloys, making you resistant to extreme temperatures, high-impact forces, and various forms of energy-based attacks. Internal self-repair systems ensure that even significant damage can be rapidly mitigated, allowing you to continue fighting long after a purely biological body would fail. Despite the overwhelming power at your disposal, the cybernetic enhancements are seamlessly integrated, maintaining the essence of your humanity, though the balance between machine and soul is one you must constantly navigate.

Homunculus [400CP]

Becoming a Homunculus transforms you into an artificial lifeform, a being crafted through alchemical or mystical means, with every fiber of your existence carefully engineered for superior performance. Unlike those born naturally, your knowledge is not acquired but gifted, instilled into your consciousness at creation. This grants you an advanced understanding of combat, magic, and various disciplines without the need for years of training. You are stronger, faster, and more resilient than the average member of your race, with capabilities that surpass normal limits in every aspect.

Your mana pool and ki reserves are significantly expanded, giving you the capacity to unleash devastating spells, techniques, or abilities with far greater frequency than others. This vast well of energy allows for continuous use of magic and physical prowess in battle, without the fatigue that would plague ordinary fighters. Whether harnessing destructive magical forces or channeling inner ki for enhanced physical combat, you can sustain your power far longer, making you a formidable presence on the battlefield.

Physically, your body is a masterpiece of artificial design. Your muscles are denser, granting you extraordinary strength that rivals or exceeds even the mightiest warriors. Your speed and agility are heightened, allowing you to outmaneuver enemies with ease. Perhaps most impressive is your accelerated regenerative ability—wounds that would cripple or kill others are mere inconveniences to you. Your body can rapidly repair itself, healing cuts, fractures, and even severe injuries in moments, while your magical core replenishes just as swiftly, ensuring that both body and energy are constantly renewed. Beyond raw power, your nature as a Homunculus makes you resistant to many ailments that plague organic beings. Poisons, diseases, and fatigue affect you minimally.

Hero

Transformation Sequence [Free/Hero Only]

You now possess the incredible ability to transform based on your chosen job classification. Each transformation is as unique as you desire, blending intricate movements, dazzling effects, and powerful poses, all tailored to your personal style. Whether it's a flash of light, a burst of energy, or an elegant cascade of magic, your transformation sequence is entirely under your control—an art form that reflects your power, personality, and purpose.

For those inspired by Super Sentai and Magical Girls, transformation commands can be as creative and unique as the characters themselves. Expect vibrant displays of color, swirling ribbons, elemental bursts, or even celestial motifs that align with your chosen theme. Kamen Rider and Ultraman enthusiasts will have access to classic transformation cues like the iconic battle cry of “Henshin!” or a resonant, powerful word that triggers the metamorphosis into your battle-ready form. Regardless of the style, each transformation is imbued with cinematic flair, complete with energy surges, glowing symbols, or armor materializing piece by piece.

One of the most thrilling aspects of this power is your seamless mastery of pre-transformation poses, catchphrases, and one-liners. Whether you're declaring, “Evil, prepare to meet justice!” or whispering, “This is the end of the line,” each phrase is delivered with dramatic flair and absolute conviction. These moves flow from you with the ease of a seasoned performer, adding theatricality and style to every battle.

Perhaps the most empowering feature of this ability is its absolute protection from interruption. No matter the chaos of battle or the urgency of the situation, your transformation is a sacred moment that cannot be disrupted. Time itself seems to pause, granting you the freedom to complete your sequence in perfect form, ensuring every flourish, spin, and final pose lands flawlessly.

Finally, you have full creative freedom over how your transformation sequence plays out. Want armor to appear like shimmering crystal shards or fiery wings to erupt from your back? Done. Desire a theme song that plays as your transformation unfolds, with explosions punctuating every move? It's yours. Whether you opt for elegance, chaos, or something entirely whimsical, your transformation is a spectacle, a declaration of power, and a moment no one will ever forget.

Super Sentai

Team Coordination [100 CP]

The bond between teammates is more than just camaraderie—it's an instinctive connection that transcends words. With this perk, you can flawlessly synchronize with your allies, moving in perfect harmony during battle. Your strikes flow seamlessly into one another, creating devastating combo attacks that overwhelm opponents. Whether it's a well-timed dual strike or a perfectly executed diversion, you and your team anticipate each other's moves with uncanny precision. The synergy is effortless, allowing even the most complex strategies to unfold without hesitation, transforming your group into a unified, unstoppable force.

Sentai Spirit [100 CP]

When you fight alongside your team, a surge of energy fills your body, elevating your strength, resilience, and resolve. This isn't just personal power—it's the collective spirit of your group resonating in every movement. The presence of your comrades fuels your determination, sharpening your focus and amplifying your abilities. Even in the face of overwhelming odds, the bond you share creates a palpable aura of hope and courage, inspiring you to push beyond your limits. Victory becomes not just possible, but inevitable, as the unbreakable spirit of teamwork ignites within you.

Elemental Armor [200 CP]

Your transformation is no longer just a shield against conventional attacks; it becomes a bastion against elemental forces, tailored to your chosen resistance. Whether it's fire's searing heat, ice's biting chill, or lightning's furious surge, your armor absorbs and nullifies these threats, rendering you nearly impervious to their effects. Flames that would engulf others dissipate harmlessly against your defense, frost shatters upon contact, and lightning dances across your armor without leaving a mark. This elemental resistance isn't just defensive—it empowers you, allowing you to stride confidently through hazards that would otherwise overwhelm ordinary fighters, turning the battlefield into your domain. You can buy this multiple times to get resistance to other elements.

Team Fusion Strike [200 CP]

When you and your team combine your powers, the result is nothing short of cataclysmic. With perfect coordination and an unbreakable bond, you channel your individual energies into a single, awe-inspiring attack. Whether it manifests as a massive beam of energy, an elemental storm, or a coordinated barrage, the fusion strike is devastating, capable of turning the tide of battle in an instant. The sheer force of this combined power overwhelms even the strongest enemies, leaving destruction in its wake. This technique is more than a mere assault—it's a testament to your unity, a dazzling display of teamwork that exemplifies the strength of your collective will.

Rapid Recovery [400 CP]

Your body has been honed to recover at an astonishing pace, allowing you to heal from wounds and fatigue far faster than ordinary beings. Between battles, what would take others hours or even days to recover from fades in mere moments, as torn muscles knit themselves back together, bruises vanish, and energy surges through you once again. Whether it's the result of advanced technology, mystical enhancements, or sheer willpower, this ability ensures that you're always ready for the next encounter, stepping into each fight refreshed and at full strength. Even in prolonged battles, brief pauses allow you to regain enough vitality to keep pressing forward, making you a relentless force on the battlefield.

Energy Aura [400 CP]

Surrounding you is a palpable field of raw energy, shimmering with latent power that deflects minor attacks before they can even reach your body. Blades are turned aside, projectiles slow as they approach, and weaker enemies hesitate, feeling the oppressive weight of your presence. This aura is more than just a shield—it's a statement of dominance, radiating an intimidating force that unsettles foes and saps their confidence. The mere sight of you wrapped in this protective glow inspires awe and fear, making weaker opponents second-guess their attacks while providing you with a subtle but crucial edge in combat.

Zord Summoner [600 CP]

With a commanding call or a signature gesture, you can summon a colossal mechanical Zord to your side, a towering machine of might and power that embodies your strength and spirit. Whether it takes the form of a ferocious beast, an armored vehicle, or a legendary warrior, your Zord is a force to be reckoned with, capable of turning the tide of battle through sheer size, firepower, and resilience. It responds to your commands with unwavering loyalty, executing precise attacks, powerful maneuvers, or shielding you and your allies from harm. Your bond with the Zord transcends mere piloting, creating a synergy that amplifies your effectiveness in combat, making you a one-person army when your Zord takes the field.

Mecha Mastery [600 CP]

You possess unparalleled expertise in piloting giant mechs, moving with a grace and precision that defies their massive size. Where others might lumber awkwardly in such machines, you dance through battle, executing complex maneuvers with ease, and striking with pinpoint accuracy. Whether controlling a single mighty robot or coordinating the intricate fusion of combination mechs, your skill ensures seamless transitions, flawless teamwork, and devastating power. You understand every nuance of your mech's systems, from its energy output to its weaponry, allowing you to push it beyond normal limits. Your mastery is not merely technical but instinctual, making you a true virtuoso in the art of mechanized warfare.



Kamen Rider

Advanced AI Integration [100 CP]

Your transformation suit is equipped with a sophisticated AI assistant, seamlessly integrated into your helmet or visor. This AI constantly analyzes the battlefield in real time, identifying enemy weaknesses, predicting attack patterns, and optimizing your combat strategies. It provides instant feedback, suggesting the most effective countermeasures and adjusting your suit's performance to enhance speed, strength, or defense as needed. Whether it's recalibrating your energy levels mid-fight or coordinating complex maneuvers, this AI ensures you are always one step ahead, transforming every battle into a calculated dance of precision and power.

Enhanced Reflexes [100 CP]

Upon transformation, your body is imbued with superhuman reflexes, enabling you to react with blinding speed and pinpoint accuracy. Every movement becomes instinctive, allowing you to dodge incoming attacks with split-second precision and deliver counterstrikes before your enemy can react. Whether you're weaving through a hail of projectiles, catching an opponent off-guard mid-attack, or executing complex aerial maneuvers, your enhanced reflexes ensure that you remain untouchable in combat. This agility not only grants a physical edge but also amplifies your confidence, knowing you can respond to any threat faster than the human eye can follow.

Gadget Integration [200 CP]

Your transformation is a marvel of engineering, equipped with an arsenal of powerful gadgets seamlessly integrated into its design. From deployable drones and grappling hooks to energy shields and plasma emitters, these gadgets grant you versatile combat options. Whether disarming traps, launching surprise attacks, or shielding allies, your gadgets can adapt to the needs of the battle, turning your armor into a multi-functional powerhouse. With the ability to upgrade and customize, you remain a dynamic force, always ready with the perfect tool for any situation.

Energy Conduit [200 CP]

Your transformation is designed to absorb ambient energy from the environment or siphon it directly from enemy attacks, channeling it into your core systems. This absorbed energy can be redirected to enhance your physical power, amplify your defensive shields, or fuel devastating energy-based attacks. Whether you're drawing power from electrical discharges, solar energy, or even mystical forces, the Energy Conduit ensures that you're never without the fuel needed to overpower your foes, turning incoming damage into your greatest strength.

Form Change [400 CP]

Your armor now possesses the ability to shift into multiple forms, each granting unique abilities tailored to specific combat scenarios. One form might enhance speed and agility, perfect for evasive maneuvers, while another emphasizes brute strength, capable of overpowering even the toughest opponents. Each transformation comes with a distinct aesthetic and specialized weaponry, ensuring you can adapt to any challenge. This perk can be purchased multiple times, allowing for an ever-expanding repertoire of forms to switch between effortlessly during battle.

Signature Rider Kick [400 CP]

Your ultimate finishing move, the Signature Rider Kick, is a spectacular and devastating attack that channels a massive surge of energy into a single, powerful strike. As you launch into the air, energy crackles around you, gathering into a concentrated blast at the point of impact. When unleashed, the force is enough to obliterate even the most formidable enemies in a dazzling explosion of power. This iconic attack embodies the essence of your rider's spirit, ending battles with an overwhelming display of strength and precision.

Tactical Genius [600 CP]

Your mind becomes a finely honed weapon, capable of analyzing battlefields with unmatched clarity and precision. In the heat of combat, you can assess enemy strengths, weaknesses, and intentions in an instant, devising complex strategies that outmaneuver even the most cunning opponents. Whether coordinating with allies or facing overwhelming odds alone, your ability to predict enemy movements, exploit openings, and adapt to changing circumstances ensures you always stay one step ahead. This mastery of combat intelligence allows you to turn the tide of any battle, transforming even the most desperate situations into victories through sheer tactical brilliance.

Ultimate Rider Form [600 CP]

This is the apex of all transformations, pushing the boundaries of what even an Ultimate Rider Form should be. Your strength becomes cosmic, your resilience high-immortal, and your energy radiates with such intensity that it can reshape the battlefield itself. Time slows at your command, reality bends under your might, and even the most powerful foes tremble before your presence. In this state, you embody unstoppable power, a force of nature that can rewrite the outcome of any battle and reshape the fate of worlds.



※画像はイメージです。
※Actual product may differ slightly from photos.
※画像はシリーズ商品を集めてディスプレイしたものです。

Ultra

Colossal Strength [100 CP]

Your strength is now as immense as your towering form, granting the ability to lift, crush, or hurl objects the size of skyscrapers with ease. Each punch is a seismic event, capable of toppling entire buildings or sending colossal enemies crashing through the landscape. Despite your overwhelming size, your precision remains keen, allowing you to wield your strength with both raw power and strategic finesse, turning the tide of battle through sheer might.

Ultra Light Beam [100 CP]

Harnessing the radiant energy within, you unleash a beam of pure destructive power from your hands or chest. This beam pierces the skies, capable of slicing through mountains or disintegrating massive foes in an instant. Its energy is not only a weapon but also a symbol of justice, shining as a beacon of hope amidst the chaos, delivering overwhelming force with the intensity of a blazing star.

Ultra Speed [200 CP]

Soar through the skies at hypersonic speeds, with agility that belies your colossal form. Your flight is swift and graceful, allowing you to traverse vast distances in moments or dodge incoming attacks with precision. Whether racing through the stratosphere or weaving through a cityscape, your unmatched speed transforms you into a blur of motion, making it nearly impossible for foes to lock onto your position.

Kaiju Tamer [200 CP]

With an innate understanding of colossal beasts, you can command and control giant monsters with ease. These titanic allies respond to your will, turning from city-leveling threats into powerful partners in battle. Your presence alone exerts dominance over even the wildest kaiju, allowing you to guide their actions or quell their rage, making you the ultimate guardian against—or master of—monstrous threats.

Cosmic Resonance [400 CP]

By attuning to the vast energies of the cosmos, you channel raw celestial power into your attacks. This resonance enhances your strikes with the force of collapsing stars, and your energy blasts carry the fury of cosmic storms. The universe itself feels like an extension of your being, allowing you to wield the might of galaxies and unleash devastation on a planetary scale.

Planetary Defender [400 CP]

A shimmering, impenetrable shield forms around an entire city or region at your command, deflecting even the most cataclysmic assaults. This barrier draws from your unyielding will and cosmic power, protecting those within it from destruction. Whether fending off meteoric impacts or shielding against kaiju rampages, you stand as the ultimate guardian, ensuring no harm befalls those under your protection.

Cosmic Burst [600 CP]

In moments of critical need, you unleash a colossal explosion of pure energy, annihilating all enemies within its immense radius. This cosmic burst is a blinding eruption of power that leaves devastation in its wake, obliterating foes and reshaping the battlefield. It is a trump card of unimaginable force, turning the tide of any battle and leaving a lasting impact on the world around you.

Dimensional Traveler [600 CP]

You transcend the limits of a single reality, moving effortlessly between dimensions. Whether seeking refuge, launching surprise attacks, or exploring alternate realms, you can open rifts in space and time, traversing the multiverse with ease. No barrier is too great, and no enemy can truly contain you, for you exist beyond the constraints of a single world, wielding the cosmos itself as your playground.



Magical Girl

Cute Mascot Companion [100 CP]

A charming, talking mascot joins you, brimming with knowledge of magical lore from this world and any future realms you may visit. This adorable companion offers guidance, wisdom, and moral support, often providing crucial insight in dire moments. With their quirky personality and boundless enthusiasm, they are both a loyal friend and a living library of magical knowledge.

Magical Parkour [100 CP]

You move through the air with the grace and speed of a shooting star, leaping from rooftop to rooftop or soaring through open skies effortlessly. Your fluid movements blend acrobatics with magic, allowing you to traverse any terrain with ease. In battle, your parkour becomes a dazzling dance, evading attacks with elegance and striking from unexpected angles.

Elemental Magic [200 CP]

You command the elemental forces of nature, bending fire, water, wind, or another element of your choosing to your will. Whether conjuring flames to incinerate enemies, summoning torrents of water to cleanse or overwhelm, or wielding wind to scatter foes, your mastery over the elements allows you to shape the battlefield in ways both devastating and awe-inspiring.

Illusion Mastery [200 CP]

With the flick of your hand, you create intricate and convincing illusions that deceive the senses. These illusions can take the form of doppelgängers, environmental changes, or fantastical mirages, sowing confusion and chaos among your enemies. You are the master of misdirection, and foes never know whether they are fighting reality or one of your dazzling creations.

Charm of Serenity [400 CP]

With a gentle wave, you emit an aura of calming magic that soothes both allies and enemies alike. Hostile creatures grow placid, their aggression melting away as if touched by a tranquil breeze. Even the most enraged foes falter under its influence, while allies find their minds cleared of fear and doubt, bolstering their focus. This power brings peace to the battlefield, turning the tide of conflict with the purity of serenity itself.

Signature Spell [400 CP]

At the core of your magical arsenal is a spell unique to you, embodying your essence and identity. Whether it manifests as an awe-inspiring burst of energy, a powerful healing incantation, or a reality-bending trick, this spell is unmatched in its potency and effectiveness. It defines your magical style and becomes the signature move that allies admire and enemies fear.

Starlight Barrage [600 CP]

You summon a dazzling storm of magical projectiles, each shining like a falling star. These radiant missiles descend in a relentless torrent, overwhelming foes with sheer force and beauty. Each projectile is guided by your will, striking with pinpoint accuracy to obliterate defenses and drive enemies into disarray. The sky alights with this cosmic assault, dazzling both friend and foe with its overwhelming brilliance.

Purification Wave [600 CP]

A surge of radiant light radiates from you, sweeping across the battlefield in a wave of purifying energy. This magic cleanses all traces of dark magic, breaking curses, lifting corruption, and restoring purity to those it touches. Enemies reliant on dark power recoil as their malevolence is dissolved, while allies feel rejuvenated, their spirits uplifted by the cleansing brilliance of your light.



Villains

Portal Creation [Free/Villains Only]

You have unlocked the ability to summon portals at will, tearing open the fabric of space to traverse vast distances in an instant. With a mere gesture, shimmering rifts appear before you, leading to any location within the world you inhabit.

Whether you seek to escape a heated battle, launch a surprise attack, or simply travel with unparalleled speed, your portals offer you an unassailable advantage in mobility. Their appearance is accompanied by a mesmerizing ripple of energy, a visual display of your mastery over spatial manipulation.

The true beauty of your portals lies in their efficiency and speed. Unlike traditional methods of travel, these gateways are instantaneous, eliminating the need for long journeys or delays. In the heat of combat, this power allows you to retreat at a moment's notice or reposition yourself strategically to outmaneuver your enemies. Allies and minions can pass through effortlessly, granting your forces the ability to strike from unexpected angles or vanish into thin air, leaving your adversaries bewildered and vulnerable.

Moreover, the portals possess a unique defensive quality. As they close behind you, they emit a destabilizing energy that disorients anyone attempting to follow. Opponents who dare to chase you find themselves dissuaded, either confused by the residual distortion or deterred by the chilling sensation of spatial displacement. This ensures your safe retreat, making pursuit a perilous and often futile endeavor, leaving your foes frustrated and off-balance.

Beyond their practical use, your portals carry an air of mystery and intimidation. Each opening is a reminder of your control over dimensions, a statement that no boundary can contain you. The swirling, otherworldly glow of the portals is as much a symbol of your power as it is a tool, instilling fear and awe in those who witness them. Whether used to traverse great distances, deliver crushing ambushes, or escape with ease, your portals cement your status as a master manipulator of space, untouchable and ever-elusive.

Grunts

Fearless[100CP]

Fear has no hold on you, allowing you to face even the most terrifying threats without hesitation. Whether it's an overwhelming monster, a seemingly invincible enemy, or an environment that would scare anyone else, you stand firm and remain completely calm in the face of danger. This removes fear-based debuffs and boosts your mental fortitude.

Improvised Weapon [100CP]

You can turn almost any nearby object into a weapon with surprising effectiveness. From rocks and sticks to everyday tools or broken furniture, you can quickly identify the potential of anything within arm's reach and wield it with deadly precision, making you a constant threat even when you're unarmed.

Tactical Response [200CP]

React to any battlefield situation quickly, allowing you to take advantage of openings in combat. Whether it's an attack or a change in the environment, your reflexes and decision-making are on point, allowing you to either evade, block, or counterattack at just the right moment, catching your opponents off guard.

Endurance Boost [200CP]

Your stamina regenerates faster, and you can endure harsh conditions for longer. Whether it's a long pursuit or a battle that stretches on for hours, your body doesn't tire easily, allowing you to keep up with the most grueling situations. Your recovery rate after strenuous activity is greatly improved.

Overdrive[400CP]

Push your body beyond its normal limits for a brief period, greatly enhancing your strength and speed. When you activate this perk, your muscles surge with power, and your reflexes become lightning-fast. You can perform incredible feats of strength and speed for a short duration, but it comes with a high cost—your body will be left exhausted afterward, and you may feel weaker for a while.

Survival Instincts[400CP]

You gain heightened senses, allowing you to detect threats and react to them before they strike. Your instincts are razor-sharp, letting you detect hidden enemies, hear faint movements, or sense subtle environmental changes. This skill can give you the edge in detecting ambushes, finding hidden traps, or simply being prepared for any attack.

Battle Hardened[600CP]

Experience in combat has made you nearly immune to fear, confusion, and status ailments. The chaos of battle no longer fazes you, and you can stand your ground even in the most intense situations. You've developed a mental toughness that makes you resistant to being stunned, confused, or manipulated by fear-based powers or illusions.

Bloodlust[600CP]

Your desire to win pushes you to become more powerful with every victory, growing stronger after each kill. Every time you defeat an enemy or win a battle, your strength increases, either in raw power, agility, or endurance, for a brief period. The more you fight, the more unstoppable you become, and your bloodlust can drive you to pursue your enemies with an unwavering hunger for victory.



Monster Creator

Basic Monster Knowledge[100CP]

You gain a basic understanding of how to breed and create simple monsters with ease. With this knowledge, you can design and cultivate basic creatures, from simple beasts to monstrous minions. These creatures can follow commands, fight on your behalf, or serve specific tasks, but they may not possess extraordinary abilities or intelligence. You'll know how to establish environments, feed them, and breed them for future generations.

Genetic Engineering [100CP]

With this perk, you can modify monsters to be more resistant to various conditions or enhance their traits. You can fine-tune aspects of their biology such as their strength, stamina, or durability to make them more effective in combat or other tasks. Additionally, you can create a monster that can mimic the abilities of another creature or being for a limited time. Whether it's duplicating a creature's elemental abilities or copying a rare talent, this perk opens the door to creating incredibly versatile monsters.

Biomass Storage[200CP]

Your monster creations are more efficient, absorbing nutrients and energy faster to grow and strengthen. They can evolve quicker, reach maturity faster, and be ready for combat or utility tasks sooner than regular creatures. Additionally, this perk boosts the intelligence of your monsters, making them more self-aware and easier to control. They may start to understand simple commands, recognize patterns, and even show signs of independent thought, making them valuable companions or reliable soldiers.

Adaptive Evolution[200CP]

Your monsters can evolve rapidly in response to threats, becoming stronger as they face different challenges. Whether they're growing tougher hide after facing an enemy with physical attacks or gaining an elemental resistance after repeated exposure to a specific force, your creatures' biology adapts quickly. This makes them more capable of surviving hostile environments, and with this perk, your monsters grow faster and stronger, requiring less time to reach their peak power, ensuring they stay ahead of evolving threats.

Summon Familiar[400CP]

Create a small, loyal creature to aid you in everyday tasks or battles. These creatures are designed to be by your side, either to act as helpers, scouts, or companions. They can be a constant source of assistance, performing duties that may seem tedious or assisting in battle with special abilities. While they are not as powerful as your main monsters, they are agile, dependable, and loyal, often learning to bond with you over time and growing in strength as you continue to raise them.

Monster Resurrection [400CP]

With this ability, you can bring fallen monsters back to life, resurrecting them with enhanced strength. After a battle, if a monster in your creation is defeated, you can use your powers to revive it, breathing new life into it. Not only does this restore its health, but the resurrection process strengthens the monster's body, improving its physical capabilities and resilience. Whether it's through repairing damaged organs, boosting its endurance, or enhancing its combat instincts, your revived monsters come back stronger than before, ready to rejoin the battle with renewed vigor. The more often you resurrect a creature, the more powerful they can become, adding a tactical advantage in prolonged fights or ongoing campaigns.

Kaiju Growth[600CP]

Your monsters can now grow to colossal sizes, becoming unstoppable forces capable of crushing entire cities or armies. With this perk, you gain the ability to trigger a dramatic transformation in your creatures, turning them into towering behemoths that wreak havoc on everything in their path. These gigantic monsters possess enhanced strength, durability, and elemental power, able to smash through buildings, devastate landscapes, and dominate entire battlefields. They can rampage across cities, overwhelming even the most advanced military forces. Whether it's a massive dragon, a gargantuan insect, or a mighty reptilian behemoth, your monsters become towering kaiju-level titans that instill terror and destruction wherever they go. The size and power of these creatures make them ideal for large-scale combat, siege tactics, or overwhelming your enemies in an instant.

Creature Fusion[600CP]

Combine multiple monsters into a single, superior being with the best traits of all. With this perk, you gain the ability to merge the strengths and abilities of different monsters, creating a new creature with enhanced traits. You could combine the speed and agility of a smaller, nimble monster with the raw strength and durability of a larger, more powerful one. The resulting hybrid will possess the best qualities of each, possibly even gaining new, unique abilities that wouldn't exist in any single one of them. This fusion allows for more powerful, versatile creatures, making your army even more fearsome and adaptable.



Field Agent

Covert Operation[100CP]

You are a master of stealth, capable of infiltrating even the most secure locations with minimal risk of detection. Whether it's bypassing high-tech security systems or slipping past guards undetected, your skill in remaining unseen is unparalleled. You can adapt to various environments, moving silently through shadows or blending seamlessly into crowds. Even in high-pressure situations, your calm demeanor allows you to navigate traps and avoid detection, making you an invaluable asset for reconnaissance missions or high-stakes extractions. Your expertise ensures that once you're inside, no door is too locked, and no information is too hidden.

Disguise Mastery [100CP]

Your ability to alter your appearance and mannerisms makes you a true chameleon. Whether you need to impersonate a high-ranking official or blend in as a civilian, your mastery of disguise is flawless. You can modify your voice, body language, and even minor physical features to create entirely new identities on the fly. This skill extends beyond simple costumes—you can convincingly adopt different accents, behaviors, and cultural nuances, ensuring you remain undetected even under close scrutiny. With your unmatched talent, you can walk into enemy strongholds as someone else and leave without raising suspicion.

Escape Artist [200CP]

No trap, restraint, or confinement can hold you for long. Whether it's handcuffs, high-tech containment cells, or elaborate death traps, you possess the uncanny ability to slip free from any situation. Your agility, resourcefulness, and understanding of mechanical and digital locks make you nearly impossible to imprison. Even if stripped of tools, you can improvise an escape using your surroundings. Combined with quick reflexes and analytical thinking, you turn every apparent capture into an opportunity for escape, always staying one step ahead of your captors.

Information Gathering[200CP]

You excel at uncovering secrets and extracting critical data, whether through digital hacking, espionage, or old-fashioned detective work. With a keen eye for detail and an instinct for where to find valuable intel, you can breach the most secure databases, decode encrypted files, or gather vital information from unsuspecting targets. Your methods are subtle and efficient, ensuring that your presence is never detected. Whether it's physical intelligence or cyber espionage, your ability to gather and process information gives you a strategic edge in any mission.

Mission Coordination[400CP]

You have a gift for managing complex operations involving multiple agents and assets. From coordinating simultaneous infiltrations to ensuring smooth communication between field agents, you are the ultimate strategist. You excel at juggling logistics, anticipating complications, and ensuring contingency plans are in place. Your leadership keeps the entire operation running like a well-oiled machine, ensuring objectives are met with precision and efficiency. Under your guidance, even the most elaborate missions proceed without a hitch, making you the linchpin of any successful covert team.

Tactical Espionage[400CP]

You specialize in dismantling enemy operations from within, using subtle sabotage and psychological warfare to sow chaos. Whether it's disabling critical infrastructure, spreading disinformation, or undermining key personnel, your actions are always precise and calculated. You know how to exploit weaknesses, turn allies into enemies, and cripple an organization without them realizing it until it's too late. With your expertise, no enemy network is safe from collapse, making you the ultimate infiltrator and saboteur.

Agent of Chaos[600CP]

Your presence can destabilize entire organizations, governments, or even global alliances. With carefully orchestrated actions, you can create discord, turning former allies against one another and causing widespread disarray. Whether through manipulation, sabotage, or assassination, you excel at disrupting the status quo. Your tactics are unpredictable, and your enemies never realize they are being played until it's too late. With you in the shadows, no institution is safe from implosion, and entire power structures can crumble at your command.

Perfect Alibi[600CP]

No matter the situation, you can always fabricate a cover story so airtight that no one will ever suspect your involvement. Whether you're fleeing a crime scene or implicated in a high-profile scandal, you can create evidence, manipulate witnesses, and even alter digital records to clear your name. Authorities, enemies, and even close allies will believe whatever narrative you present. Your ability to weave a convincing alibi ensures that you remain untouchable, even when all evidence should point to you. In the world of espionage, you are a ghost, always present but never traceable.



General

Might Makes Right[Free General only]

Your sheer physical power and combat prowess make you a dominant force in any organization. As one of the strongest members, your strength isn't just respected—it's feared. Whether in your current faction or future worlds, your reputation precedes you, ensuring that you are recognized as one of the top elite members of any group you join.

This status grants you significant influence, as others acknowledge that your strength validates your authority. You are often called upon for critical missions, leading from the front as an unstoppable force. Your position isn't just about raw power—it's about the respect and loyalty earned through countless victories, cementing you as a living symbol of strength and leadership in any faction.

Strategic Insight[100CP]

In the heat of battle, where chaos reigns and decisions must be made in seconds, your mind remains razor-sharp. You instinctively analyze the battlefield, predicting enemy movements and identifying the best course of action. Your tactical acumen allows you to adapt to changing circumstances, finding creative solutions to even the most complex challenges. Whether leading a small squad or commanding a vast army, your decisions consistently turn the tide of battle, making you a master of both offense and defense. Every move you make is calculated, ensuring maximum effectiveness with minimal loss.

Charismatic Leadership[100CP]

Your natural charisma draws people to you, and your confidence inspires unwavering loyalty. Whether addressing a crowd or leading troops into battle, your words ignite courage and determination in those who follow you. You possess an innate ability to read the emotions of others and speak in ways that resonate deeply, motivating allies to perform beyond their limits. Even in the face of overwhelming odds, your presence provides reassurance, transforming fear into resolve. As a leader, you command not just through authority but through genuine inspiration, earning trust and devotion effortlessly.

Battlefield Presence[200CP]

When you step onto the battlefield, your mere presence alters the atmosphere. Allies feel an unshakable surge of confidence, their morale bolstered by your unwavering resolve. Conversely, enemies sense the shift, their confidence waning under the weight of your commanding aura. Your presence creates an invisible but palpable energy, rallying those around you to fight harder and stand stronger. Even in dire situations, your calm demeanor stabilizes the frontlines, ensuring that your forces remain cohesive and motivated while striking fear into the hearts of your enemies.

Combat Vision[200CP]

With a single glance, you can discern the strengths and weaknesses of any opponent. Whether it's a physical vulnerability, a flawed technique, or a psychological frailty, nothing escapes your keen perception. This ability allows you to exploit openings others would overlook, turning even the smallest advantage into a decisive victory. You can predict enemy actions with uncanny accuracy, adjusting your strategy on the fly to counter their every move. In combat, you are always one step ahead, making it seem as if you can see the future, rendering your enemies' defenses futile.

Perfect Coordination[400CP]

Your ability to orchestrate complex maneuvers in battle is unparalleled. Every order you give is executed with flawless precision, as if your forces share a single mind. Whether it's a coordinated assault involving multiple units or a rapid defensive retreat, your commands are carried out without hesitation or error. Your forces move like a well-choreographed dance, each piece of the puzzle fitting perfectly into place. This level of coordination enables devastating multi-stage attacks and seamless defense strategies, overwhelming even the most well-prepared adversaries. Under your leadership, chaos becomes harmony.

Crisis Management[400CP]

When chaos erupts and all seems lost, you are the eye of the storm. No matter how dire the situation, you remain calm, assessing every variable with clinical precision. You thrive under pressure, turning disastrous circumstances into opportunities for victory. Where others see chaos, you see patterns and possibilities. Your quick thinking and adaptability allow you to rally your forces, mitigate losses, and seize the upper hand when others would falter. In the most critical moments, you are a beacon of stability, ensuring that no setback is ever final.

Absolute Authority[600CP]

Your command is absolute. When you issue an order, it is followed without hesitation or question. Your presence exudes such confidence and dominance that those under your command feel compelled to obey, trusting in your judgment implicitly. Even the most rebellious or independent spirits fall in line under your leadership. This authority extends beyond your allies, influencing potential enemies and neutral parties to consider your words carefully. In battle or diplomacy, your voice carries the weight of undeniable power, making defiance seem unthinkable and loyalty inevitable.

Battlefield Dominance[600CP]

You wield an almost supernatural control over the flow of battle, bending it to your will. With a keen understanding of tactics, terrain, and psychology, you can manipulate the ebb and flow of combat to favor your forces. You set traps that ensnare entire armies, dictate the pace of engagements, and force your enemies into positions of vulnerability. Every move your opponents make plays into your hands, leaving them struggling to mount an effective offense. Your dominance is so complete that the battlefield becomes your chessboard, with victory as the only possible outcome.

Neutral

True Neutrality [Free/Neutral Only]

True Neutrality represents a mindset that remains unshaken by the extremes of good, evil, law, or chaos. Those who embody this perspective are dedicated to balance, seeking neither to tip the scales too far in any direction nor to align themselves with any particular ideology. They act according to what the situation demands, prioritizing equilibrium over personal agendas or external pressures. Their decisions are rooted in pragmatism and a deep understanding of the world's complexities, acknowledging that neither absolute order nor complete freedom holds all the answers.

This neutrality grants the ability to navigate any situation without bias or obligation. In a world often divided by rigid beliefs, the truly neutral are able to act as mediators, guiding conflicts toward resolution without personal gain or ulterior motives. Their impartiality is a strength, allowing them to interact with all sides, gaining respect from both allies and adversaries alike. They are often seen as voices of reason, capable of offering clarity in moments clouded by emotion or dogma.

However, neutrality is not apathy. It requires constant vigilance to maintain balance, making difficult choices that others may shy away from. Those who follow this path understand that true neutrality can be isolating, as it often sets them apart from those who crave certainty in alignment. Yet, for those committed to this perspective, the reward is freedom—freedom from the need to conform, freedom to act according to what they deem right in the moment, and freedom from the constraints that bind others to rigid paths.

Technical Crew

Tool Mastery[100CP]

You have an innate understanding of tools and equipment, no matter how complex or unfamiliar. From ancient mechanical devices to cutting-edge futuristic technology, you instinctively know how to operate, maintain, and repair them with ease. This mastery allows you to quickly adapt to any situation, whether you're wielding advanced weaponry in the heat of battle or using simple tools to construct vital infrastructure. Your expertise also means you can teach others to use these tools effectively, making you an invaluable asset in any operation.

Gadgeteer[100CP]

Your creativity and resourcefulness allow you to craft ingenious gadgets out of seemingly mundane materials. With minimal resources, you can assemble versatile tools and devices tailored to specific needs, whether it's a compact weapon for combat or a specialized instrument for reconnaissance. These gadgets are often multifunctional, providing solutions to various challenges on the fly. In moments of crisis, your ability to improvise ensures that you're never caught unprepared, turning everyday items into lifesaving assets.

Advanced Diagnostics[200CP]

You possess an exceptional talent for quickly identifying issues in even the most complex systems. Whether it's mechanical, electronic, or software-based, you can pinpoint problems with precision and efficiency, often diagnosing failures before they cause significant disruptions. This skill makes you invaluable in high-pressure environments where time is of the essence. In the field, you can repair damaged equipment or fine-tune systems to optimal performance, ensuring your team's tools and technology are always ready for action.

Energy Efficiency[200CP]

Your expertise extends to optimizing the energy consumption of any device or system. By analyzing power usage, you can make adjustments that allow equipment to function longer and more efficiently, reducing the need for frequent maintenance or recharging. This ability is particularly useful in prolonged missions or operations where resources are limited. Whether it's a handheld gadget or a massive piece of machinery, you ensure that everything runs at peak efficiency, maximizing its operational lifespan.

Weapon Smith[400CP]

You are a master craftsman when it comes to weaponry, capable of designing and forging arms that are not only powerful but also uniquely suited to specific combat scenarios. Your creations boast enhanced damage, superior durability, or specialized effects such as elemental properties or status inflictions. Whether it's a sleek energy blade or a heavy-duty ballistic weapon, your work combines form and function, giving your allies a significant edge in battle. Customization is your specialty, ensuring that each weapon is perfectly tailored to its wielder's needs.

AI Innovator [400CP]

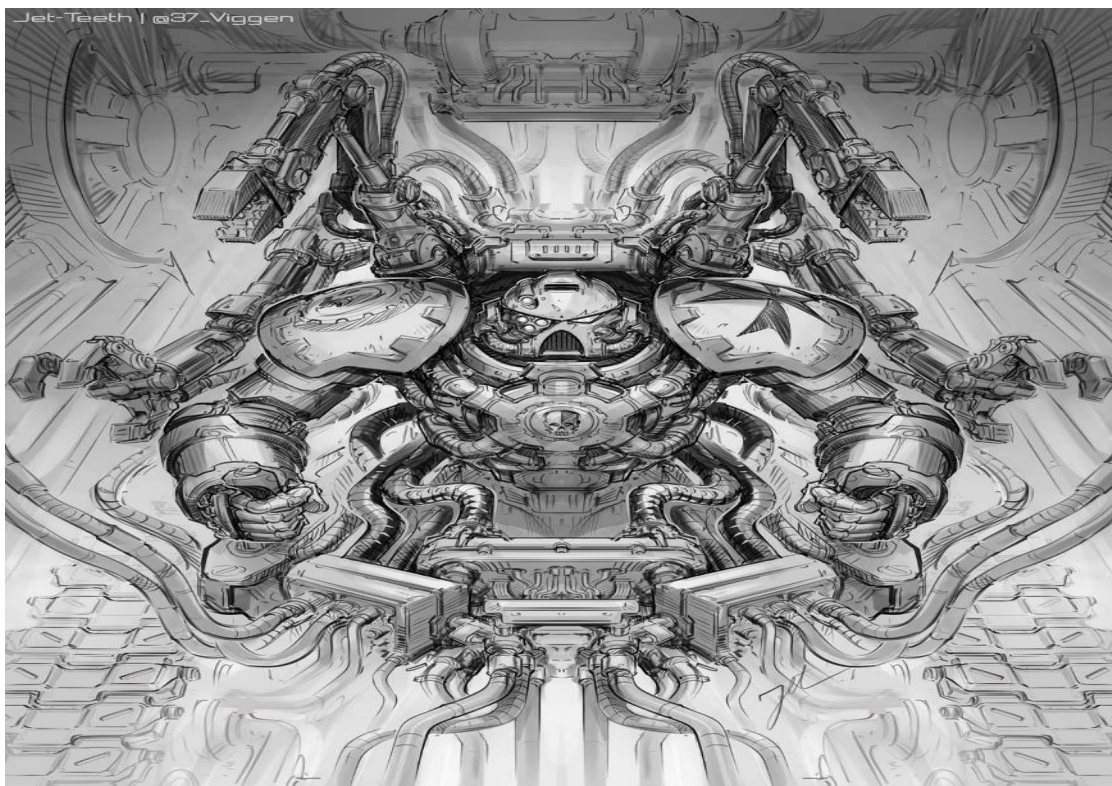
You have the skill to design and implement highly advanced artificial intelligence systems. These AIs are more than just tools—they are sophisticated entities capable of learning, adapting, and supporting your team in critical ways. From managing automated defenses to providing tactical analysis and operational support, your AI systems are invaluable assets. They can coordinate multiple operations simultaneously, monitor enemy movements, and even engage in combat autonomously, turning the tide of battle in your favor.

Nanotech Expert[600CP]

Your expertise in nanotechnology allows you to create remarkable innovations such as self-repairing armor, regenerative weapons, and adaptive gadgets. These nanobots can respond dynamically to damage, repairing equipment or enhancing its functionality in real-time. In combat, they can provide rapid field repairs or even augment your own physical capabilities. This cutting-edge technology gives you and your team a significant advantage, ensuring that your gear remains operational and effective under even the most extreme conditions.

Tech Overlord [600CP]

You wield unparalleled control over the battlefield through a vast network of advanced systems. By deploying automated drones, turrets, and surveillance tools, you can monitor and influence every aspect of a combat zone. Your systems provide real-time intelligence, disrupt enemy communications, and execute precision strikes, effectively neutralizing threats before they can act. Whether commanding from a distance or engaging directly, your technological dominance makes it nearly impossible for your enemies to mount a successful counterattack.



Clean-Up Crew

Damage Control [100CP]

You possess the expertise to repair structural damage with astounding speed and precision, restoring even the most devastated areas to their original, pristine condition. Whether it's the aftermath of a battle or the result of a large-scale disaster, you can swiftly mend crumbling walls, shattered windows, and broken machinery as if the destruction never happened. Your work leaves no trace of the chaos, ensuring that both civilians and authorities remain unaware of the conflict. This ability not only safeguards your organization's secrecy but also helps maintain public order, preserving the illusion of peace and normalcy.

Media Manipulator[100CP]

Your mastery of media allows you to shape public perception with remarkable ease. Through skillful manipulation of social media, news outlets, and influential personalities, you can spin any event to your organization's advantage. A disaster becomes a heroic sacrifice, a scandal transforms into a misunderstanding, and your enemies are painted as the true villains. By controlling the narrative, you ensure that your organization's reputation remains untarnished, fostering public admiration or fear as needed. Your influence extends far and wide, making you the hidden hand behind public opinion and sentiment.

Forensic Obfuscation[200CP]

You are a master at erasing all evidence of your organization's involvement in any operation. Whether it's physical traces like blood, fingerprints, and debris or digital records such as surveillance footage and data logs, you can eliminate them all with surgical precision. Even magical traces or psychic imprints are within your purview, ensuring no one can detect your presence. Authorities, investigators, and even advanced detection systems are left baffled by the lack of clues. Your expertise makes it seem as if your organization was never there, ensuring total deniability and airtight secrecy.

Fast Response Team[200CP]

You excel at mobilizing swiftly in the aftermath of battles, arriving on-site before anyone else to begin the clean-up process. Your team is trained to work with military precision, quickly removing debris, repairing structures, and tending to any lingering damage. In a matter of minutes, you can erase all signs of conflict, leaving behind a scene that appears untouched by violence. Your speed and efficiency prevent civilian panic and keep authorities unaware of your activities, ensuring that your organization's operations remain undetected and uninterrupted.

Advanced PR Tactics[400CP]

Your public relations acumen allows you to navigate the most volatile situations with ease. Potential scandals are skillfully transformed into opportunities for praise, while disastrous events are either reframed as necessary sacrifices or swept under the rug entirely. You can orchestrate press conferences, manipulate news cycles, and deploy charismatic spokespeople to control the narrative. With your guidance, your organization remains in the public's good graces, even when things go awry. Whether you're portraying your group as noble heroes or cunning masterminds, the public will see only what you want them to see.

Environmental Restoration[400CP]

You have access to advanced technology or magical methods that allow you to repair and restore damaged environments in the blink of an eye. Whether it's a ravaged urban area, a devastated ecosystem, or a scorched battlefield, you can rejuvenate the landscape to its former glory. Buildings are rebuilt, flora and fauna are revived, and polluted areas are cleansed without a trace of the previous destruction. This ability not only maintains the illusion of peace but also demonstrates your organization's power to reshape the world as needed, ensuring loyalty from the populace or keeping adversaries in awe.

Political Sway [600CP]

You hold immense influence over government officials, law enforcement agencies, and other key figures in positions of power. Through a combination of persuasion, bribery, blackmail, or subtle manipulation, you ensure that these individuals either support your organization's actions or turn a blind eye to them. You can secure vital resources, block investigations, or even have laws altered to suit your needs. This influence makes your organization untouchable by legal means, allowing you to operate with impunity while shaping the political landscape to your advantage.

Memory Manipulation[600CP]

Your ability to alter or erase memories is unparalleled, ensuring that anyone who witnesses your organization's activities retains no recollection of the events. Whether it's an ordinary civilian, a high-ranking official, or even a skilled investigator, you can seamlessly rewrite their memories to fit your narrative or erase them entirely. This power guarantees that no information about your organization leaks out, maintaining absolute secrecy. By controlling what others remember, you can manipulate outcomes, rewrite history, and ensure that your group's presence remains a well-guarded mystery.



Franchise Developer

Merchandising Genius [100CP]

You have an uncanny ability to design and market merchandise that captures the public's imagination. Whether it's plushies, action figures, high-end apparel, or collectible memorabilia, your creations are irresistible to fans and collectors alike. Beyond generating massive revenue, these products boost your organization's visibility and foster a sense of loyalty among supporters. Each item becomes a symbol of your brand's influence, with lines of people clamoring for the next release. Your mastery of trends and consumer desires ensures that your merchandise is always in demand, making your organization both profitable and beloved.

Media Mogul[100CP]

Your skill in creating engaging media content is unmatched, allowing you to produce everything from blockbuster movies and hit TV shows to viral internet videos. These productions captivate audiences worldwide, weaving narratives that subtly or overtly promote your organization's goals. You understand how to craft compelling stories, memorable characters, and visually stunning content that resonates with diverse demographics. Whether it's a heartwarming series or an adrenaline-fueled action movie, your media empire ensures that your organization remains at the forefront of global culture, shaping public perception on a massive scale.

Brand Ambassador[200CP]

You excel at developing a powerful and appealing brand identity that resonates deeply with the public. From the logo to the messaging, every aspect of your organization's image is crafted to inspire admiration, trust, and loyalty. Whether you position your group as benevolent protectors, innovative pioneers, or daring revolutionaries, the world embraces your vision. Your brand becomes synonymous with success and integrity, making it a household name. People wear your logo with pride, support your endeavors enthusiastically, and defend your reputation fiercely, ensuring long-term public support.

Sponsorship Magnet[200CP]

Your organization becomes a magnet for high-value sponsorship deals from major corporations eager to associate with your brand. Whether it's funding for research, access to exclusive resources, or joint marketing campaigns, these partnerships provide a steady flow of financial support. Companies compete to attach their names to your ventures, knowing that your success will elevate their own brands. You skillfully navigate these relationships, ensuring that sponsorships align with your goals while maintaining leverage. These partnerships not only bolster your resources but also expand your influence into corporate circles.

Licensing Mastery[400CP]

Your expertise in licensing transforms your organization's intellectual property into a global phenomenon. You negotiate lucrative deals across industries such as fashion, gaming, and technology, allowing others to use your brand, inventions, or imagery in their products. By extending your influence into various sectors, you ensure a constant stream of revenue while maintaining control over how your brand is represented. Licensed products bearing your mark become status symbols, driving demand and enhancing your organization's prestige. Your reach extends into everyday life, embedding your brand in every facet of popular culture.

Entertainment Empire [400CP]

You have the vision and skill to create and manage large-scale entertainment ventures that captivate millions. Whether it's opening a sprawling theme park filled with cutting-edge attractions or producing a globally successful movie franchise, your enterprises are both profitable and culturally dominant. These ventures generate massive revenue while serving as powerful tools for public engagement and influence. Visitors flock to your parks, fans eagerly await your next blockbuster, and your global events become cultural milestones. Each success further cements your organization's place as a cornerstone of modern entertainment.

Corporate Titan [600CP]

You establish a vast network of interconnected businesses that span the globe, each serving as a financial powerhouse and covert operational base. These enterprises provide constant revenue streams while also acting as hubs for intelligence gathering, logistics, or secret operations. From high-tech research firms to luxury retail chains, your businesses influence multiple sectors, ensuring your organization's financial stability and strategic flexibility. Competitors and allies alike respect and fear your economic clout, as your reach extends into every corner of the market, making you a dominant force in the global economy.

Economic Dominance[600CP]

Your mastery of economics allows you to manipulate global markets with precision, creating shifts that benefit your organization's objectives. Whether it's causing a rival's stock to plummet or engineering a boom in key industries, you wield the power to reshape economies. Governments and corporations alike are forced to adapt to your moves, often unwittingly aligning with your goals. Your influence over financial systems ensures that your organization remains wealthy, powerful, and untouchable. In a world where money rules, you are the undisputed master, dictating the flow of wealth and shaping the future of commerce.



Items:

Here Items with the same origin are discounted with 100 CP ones being free. Also you can import any item for free to any similar item here.

Super Sentai

Transformation Bracelet [100CP]

This sleek, high-tech bracelet fits comfortably around your wrist, and with a single activation phrase or gesture, it envelops you in a dazzling display of light. Within seconds, your signature Sentai suit appears, fully equipped with armor, helmet, and any necessary enhancements. The transformation is more than just aesthetic—your strength, speed, and agility are boosted the moment the suit materializes. The bracelet's design can be customized to match your Sentai color, and it serves as a symbol of unity with your team. Whether for dramatic entrances or quick escapes, the Transformation Bracelet ensures you're always battle-ready in a flash.

Color-Coded Weapon Set [100CP]

Every Sentai warrior needs a weapon that reflects their unique fighting style, and this set delivers just that. Tailored to match your Sentai color, the weapon set could include a sleek sword, an energy blaster, or even a bow, each imbued with your team's thematic energy. These weapons are lightweight, versatile, and capable of delivering devastating blows to enemies. They also have a dual function, allowing for melee combat or long-range strikes. Each weapon can emit a distinct glow in your Sentai color, adding to your dynamic presence on the battlefield.

Sentai Mecha Link Device [200CP]

A compact, wrist-mounted device that allows seamless control over your personal Zord. With this link, you can summon your Zord from afar or even pilot it remotely in emergencies. The device displays a holographic interface, allowing you to monitor your mecha's status, weapon systems, and energy levels. It also enables synchronized actions with your teammates' mechas, ensuring smooth combinations into larger forms. The Link Device's sleek design matches your Sentai uniform, and it doubles as a communication hub for quick strategizing with your team during intense battles.

Weapon Combination Module[200CP]

This innovative gadget integrates your individual weapon with your teammates' weapons to create a powerful, multi-functional arsenal. Whether it becomes a colossal cannon, a giant blade, or an energy-charged projectile launcher, the combination is determined by your team's needs in battle. Activation is simple—each team member slots their weapon into the central module, which then fuses them into a unified weapon capable of unleashing devastating finishing moves. The module is lightweight and can be worn as part of your armor, ensuring quick assembly during combat.

Zord Fusion Core[400CP]

The Zord Fusion Core is the ultimate upgrade for your mecha, allowing Zords to merge into powerful, new configurations on the fly. Unlike standard Zord combinations, the Fusion Core grants flexibility, enabling mid-battle transformations into unique forms that adapt to the battlefield's needs. Whether it's increased firepower, speed, or defensive capabilities, the Fusion Core ensures your team is never at a disadvantage. It enhances your Zord's core energy output, allowing for special attacks that combine the elemental powers or specialties of the merged Zords.

Chroma Cannon[400CP]

This enormous, color-coordinated energy cannon channels the combined power of the entire Sentai team into concentrated, devastating blasts. The Chroma Cannon glows in the team's signature colors and can fire either individual energy bursts or a massive, combined beam that overwhelms even the toughest adversaries. Each team member contributes their unique energy, creating a rainbow-like blast that's as visually stunning as it is destructive. The cannon is mounted on a mobile platform or formed from the team's combined weapons, ensuring flexibility in both offense and mobility.

Sentai Mecha[600CP]

Your personal mecha is a colossal embodiment of your Sentai spirit, themed to match your unique element or motif—be it a dragon, phoenix, or mechanized animal. It's equipped with advanced weaponry like energy swords, blasters, or missile launchers. The mecha's cockpit provides a fully immersive experience, syncing with your movements for precision control. What makes it truly extraordinary is its ability to combine with your teammates' mechas into an awe-inspiring mega-robot. The combination process is smooth and dramatic, often accompanied by dazzling light effects and epic soundtracks.

Battlizer[600CP]

The Battlizer is an elite upgrade to your standard Sentai suit, enveloping you in a second layer of high-tech armor that amplifies all your physical abilities. It is reinforced with energy-conductive plating that enhances your durability and speed while providing resistance to extreme elements like fire, ice, or electricity. The armor also unlocks a powerful new form, granting access to devastating finishers and energy-based attacks that rival the power of Zords. Sleek, futuristic, and glowing with your Sentai color, the Battlizer ensures you stand out as the team's powerhouse in critical battles.

Kamen Rider

Rider Belt[100CP]

The Rider Belt is the essential transformation device that allows the user to transform into their Kamen Rider form. It often comes with a key, card, or special token that activates the transformation sequence, which is accompanied by dramatic sound effects and visual displays. Once transformed, the user gains enhanced physical abilities, including increased strength, speed, and durability, along with access to unique combat skills. The belt itself is highly durable, resistant to damage, and can channel the user's energy into powerful finishing moves like Rider Kicks or energy blasts.

Signature Motorcycle[100CP]

Every Kamen Rider needs a motorcycle, and this sleek, high-performance bike is as iconic as the Rider themselves. The motorcycle is designed to match the Rider's aesthetic, often featuring advanced technology such as self-repair, autopilot, and the ability to transform into different modes like flight or aquatic travel. It's more than just transportation—it's a key combat tool, capable of high-speed ramming attacks, launching energy projectiles, and even assisting in synchronized Rider Finisher moves.

Form Change Module[200CP]

The Form Change Module attaches to the Rider Belt, granting the ability to switch between multiple forms, each tailored for specific combat situations. Each form comes with unique powers—such as enhanced strength, agility, or elemental control like fire, water, or electricity. The transformation is instantaneous, accompanied by a dazzling display of light and sound, making it a signature move during battle. This versatility allows the Rider to adapt to any threat, exploiting enemy weaknesses and maintaining the upper hand in combat.

Rider Weapon Gauntlet[200CP]

The Rider Weapon Gauntlet is a highly versatile piece of equipment that transforms into various weapons, including energy swords, blasters, or protective shields. The gauntlet is seamlessly integrated into the Rider's combat suit, allowing smooth transitions between offense and defense. It also has an energy storage function, enabling the user to unleash devastating charged attacks after absorbing kinetic energy from enemy strikes or environmental sources. The gauntlet's modular nature makes it an indispensable tool in any battle scenario.

Hyper Form Enhancer[400CP]

The Hyper Form Enhancer is a powerful upgrade that unlocks an advanced transformation, exponentially increasing the Rider's combat abilities. This form is visually distinct, with glowing armor, intricate designs, and enhanced weaponry. In this mode, the Rider gains superhuman strength, lightning-fast reflexes, and heightened durability, making them almost unstoppable. Special abilities unique to this form, such as time manipulation, energy manipulation, or invulnerability to specific attacks, make the Hyper Form a game-changer in high-stakes battles.

Rider Drone Support[400CP]

The Rider Drone Support summons an intelligent, autonomous drone that hovers around the Rider, providing strategic support during combat. The drone can fire precision energy blasts, deploy protective energy shields, or even project holographic decoys to confuse enemies. It can also analyze enemy weaknesses, relay tactical data, and assist in coordinating team attacks. The drone is equipped with advanced AI, making it capable of independent decision-making, ensuring constant support without distracting the Rider from combat.

Fusion Core Driver[600CP]

The Fusion Core Driver is a groundbreaking device that enables the Rider to fuse with another Kamen Rider or ally, creating a hybrid form that combines their powers, skills, and abilities. The fusion process is accompanied by a spectacular transformation sequence, resulting in a new, unique form that boasts the strengths of both fused individuals. This hybrid form is immensely powerful, capable of unleashing devastating combination attacks and wielding enhanced versions of their fused abilities. The Fusion Core Driver not only amplifies power but also deepens the bond between allies, symbolizing unity and teamwork.

These items embody the core essence of the Kamen Rider universe, emphasizing transformation, adaptability, and powerful teamwork. Each item enhances the Rider's combat capabilities, making them versatile, unstoppable heroes in their quest to protect justice and defeat evil.

Legendary Rider Arsenal [600 CP]

The Legendary Rider Arsenal grants the user access to a vast collection of mythical weapons, each once wielded by legendary Riders throughout history. These weapons are not ordinary tools of battle; they are imbued with ancient power, each carrying its own unique abilities and rich backstory. The arsenal includes a diverse array of armaments—from melee weapons to ranged weaponry—designed to handle any combat scenario with overwhelming versatility and firepower. Each weapon is surrounded by a radiant, mystical aura that signifies its storied past, making every strike feel like a part of a grand legacy.

Among these legendary weapons is the Inferno Blade, a massive sword forged in the heart of a dying star. Its blade is perpetually engulfed in ethereal flames that can cut through even the toughest armor while scorching the battlefield with waves of fire. With a single swing, it can unleash fiery shockwaves capable of engulfing multiple enemies in an inferno, turning the tide of battle in seconds.

Another prized weapon in this collection is the Eclipse Bow, an intricately designed bow made from a fragment of a celestial comet. When drawn, it generates arrows of pure energy that can pierce through barriers and track moving targets. The bow can also unleash a devastating barrage of energy arrows that rain down like a meteor shower, obliterating anything in their path. It is a weapon of precision and power, perfect for long-range domination.

The arsenal also includes defensive tools like the Aegis Shield, an indestructible shield that can absorb and reflect energy attacks, creating devastating counterattacks. For crowd control, the Thunder Gauntlets deliver electrically charged punches that can incapacitate multiple enemies with a single strike, creating shockwaves that disrupt enemy formations.



Ultra

Energy Transformation Capsule [100CP]

A compact, unassuming capsule containing the essence of cosmic energy, the Energy Transformation Capsule allows the user to transform into a towering Ultra Warrior. Upon activation, the capsule emits a brilliant flash of light that envelops the user, accompanied by an iconic sound effect reminiscent of legendary Ultra Warriors. As the transformation completes, the user stands clad in a radiant suit adorned with intricate energy patterns unique to their Ultra lineage, glowing with cosmic energy. This awe-inspiring transformation not only enhances the user's physical capabilities but also projects a powerful aura that instills fear in enemies and hope in allies. The transformation is seamless, and the user retains full control over their enhanced form, ready to protect the universe from any threat.

Cosmic Bracer[100CP]

The Cosmic Bracer is a sleek, futuristic wrist device designed to amplify the user's strength and durability exponentially. It glows with a rhythmic pulse synchronized with the user's heartbeat, each pulse intensifying the bracer's power. When activated, the bracer channels cosmic energy into the user's fists, enabling energy-infused punches capable of shattering boulders, tearing through armor, or sending adversaries flying with bone-crushing force. The bracer's luminous glow intensifies during attacks, leaving a trail of cosmic light in its wake. Additionally, it serves as a protective device, creating a temporary energy shield that absorbs incoming blows, making the user an unstoppable force in both offense and defense.

Plasma Core Generator[200CP]

The Plasma Core Generator is a compact yet immensely powerful device embedded within the Ultra Warrior's suit or transformation gear. It acts as a supplementary energy core, significantly boosting the user's energy reserves and allowing for extended combat durations without fatigue. The generator channels plasma energy through the user's body, enhancing the intensity of energy-based attacks like energy beams, shockwaves, and defensive shields. With this augmentation, the Ultra Warrior can sustain high-powered combat techniques for longer periods, ensuring that they outlast even the most relentless enemies in prolonged battles. Its smooth integration ensures no disruption to movement, making it a critical asset in long-term engagements.

Ultrasonic Roar Device[200CP]

The Ultrasonic Roar Device is a versatile tool embedded in the Ultra Warrior's chest or throat area, capable of unleashing a devastating sonic shockwave. When activated, the device generates a concentrated blast of ultrasonic waves that disorient enemies, shattering their coordination and leaving them vulnerable. The roar is accompanied by visible ripples of energy, capable of causing structural damage to surroundings and sending weaker foes sprawling. Beyond its offensive capabilities, the device can also clear debris, create space in chaotic combat zones, or disable enemy communications. Its effectiveness makes it a valuable tool for both combat dominance and crowd control.

Kaiju Containment Device[400CP]

The Kaiju Containment Device is an advanced, portable device capable of capturing and temporarily imprisoning Kaiju-level threats. Upon activation, it deploys a glowing, energy-based containment field designed to restrain even the most powerful Kaiju, neutralizing their movements and suppressing their energy output. The device uses advanced spatial compression technology, effectively shrinking the Kaiju into a stasis-like state. The containment field glows with shifting patterns, symbolizing the struggle between the device's power and the Kaiju's immense strength. Although the containment is temporary, it provides enough time to either neutralize the threat permanently or transport the Kaiju to a secure location.

Planetary Defense Grid[400CP]

The Planetary Defense Grid is a highly advanced combat support system capable of calling down orbital strikes with pinpoint accuracy. Linked to a network of orbital satellites or cosmic stations, the defense grid rains down powerful energy blasts, providing overwhelming firepower to support ground combat. Each strike is marked by a brilliant flash of light as the energy descends from the sky, causing devastating explosions upon impact. The system can be used to clear large areas of enemy forces, destroy fortifications, or provide critical cover during retreats. Its immense destructive power makes it a game-changing tool in large-scale battles.

Kaiju Island[600CP]

Kaiju Island is a unique and isolated domain, either created by advanced technology or as a hidden dimension, where captured Kaiju are transported and contained. The island is designed to provide the perfect habitat for these colossal creatures, with automated defenses ensuring they remain within its boundaries. Advanced monitoring systems constantly track the Kaiju's behavior, ensuring any signs of aggression are neutralized before escalation. The island serves as both a research facility and a secure holding ground, allowing the Ultra Warrior to study Kaiju behaviors, extract useful data, or even ally with certain Kaiju in dire situations.

Galactic Communicator[600CP]

The Galactic Communicator is a sophisticated communication device that allows instant contact with other Ultra Warriors across dimensions and distant galaxies. Compact and sleek, it fits seamlessly into the user's armor or wristband. The communicator provides real-time tactical updates, coordinates interstellar travel routes, and facilitates seamless team communication during cosmic battles. Its holographic interface displays star maps, enemy positions, and ally locations. Once per jump, it can summon an interdimensional team-up with other Ultra Warriors, creating epic cross-dimensional alliances to combat universe-level threats. The communicator ensures the Ultra Warrior is never truly alone in their cosmic quest for justice.

Magical Girl

Transformation Locket[100CP]

The Transformation Locket is a beautifully crafted, intricate piece of jewelry that glows with an ethereal light when activated. Upon opening the locket, it releases a cascade of shimmering sparkles, swirling around the user in a dazzling, themed light show. The transformation sequence is unique to the user's magical essence, featuring motifs such as stars, flowers, or gemstones that highlight their magical affinity. As the light intensifies, the user is enveloped in a radiant aura, emerging in their magical girl form—complete with a custom-designed outfit that reflects their powers. This transformation not only enhances physical and magical attributes but also serves as a beacon of hope and inspiration to allies.

Sparkle Wand[100CP]

The Sparkle Wand is a delicate, ornate wand adorned with vibrant gemstones and dangling charms that glimmer with every movement. It acts as both a weapon and a magical focus, firing beams of concentrated light magic. While its primary function is to unleash low-level offensive spells, such as blinding flashes or starlight beams, it is also adept at creating dazzling visual effects that can distract or disorient enemies. The wand's magic is versatile, allowing for simple utility spells like lighting dark areas or drawing defensive circles. Its charm lies in its ability to channel whimsical energy into practical combat power, making it essential for early magical girl battles.

Shimmer Boots[200CP]

The Shimmer Boots are lightweight, enchanted footwear designed to grant the wearer incredible agility and grace. Crafted from iridescent materials, they shimmer with every step, leaving behind trails of glittering light. These boots allow the user to leap extraordinary distances, performing acrobatic feats such as flips, mid-air dashes, and graceful landings without effort. In combat, they enable the user to evade attacks with elegant precision, darting around the battlefield like a streak of light. The sparkling trails left behind can momentarily dazzle opponents, adding a tactical edge. Whether in battle or performance, the boots ensure the user moves with unmatched elegance.

Arcane Cloak of Light[200CP]

The Arcane Cloak of Light is a flowing, radiant garment that shimmers like liquid sunlight, providing both protection and stealth. Its primary function is to enhance magical defense, creating a soft barrier that absorbs incoming magical attacks. The cloak can also render the user invisible for short durations, allowing them to evade enemies or reposition during combat. Its shimmering surface ripples with light when in use, and the invisibility effect is seamless, leaving only a faint glimmer in its wake. Beyond its defensive capabilities, the cloak embodies the beauty of light magic, making the wearer both an untouchable guardian and an elusive shadow.

Enchanted Mirror Shield[400CP]

The Enchanted Mirror Shield is a radiant, reflective shield that gleams with a surface as smooth as polished glass. It can deflect both magical and physical attacks, sending them back toward enemies with amplified force. The shield's true power lies in its ability to grant the user brief glimpses into the immediate future, offering predictive insights that enhance combat strategy. By reflecting an enemy's intentions or movements, the user can anticipate attacks and counter effectively. The shield's surface glows faintly when its future-sight ability activates, giving the user a split-second advantage in battle, ensuring they remain one step ahead of their foes.

Elemental Gemstones[400CP]

The Elemental Gemstones are a collection of four magical gems, each representing a different elemental force: fire, water, wind, and earth. These gemstones can be embedded into the user's weapon, accessories, or armor, allowing the user to switch between elemental attacks seamlessly. For example, the fire gem enables fiery blasts, the water gem conjures waves or ice shards, the wind gem grants tornado-like gusts, and the earth gem summons stone barriers or tremors. The gemstones glow vividly when in use, and their versatility allows the user to adapt to various combat scenarios, countering enemy weaknesses with precision.

Eternal Star Core[600CP]

The Eternal Star Core is a mystical artifact of immense power, housing the energy of a celestial body. Upon activation, it transforms the user into a cosmic force of nature, radiating an otherworldly aura that glows with the light of countless stars. In this form, the user gains near-limitless magical power, enabling them to alter reality within localized areas. They can reshape the battlefield, conjure cosmic storms, or heal entire regions with a wave of their hand. The core's power is so vast that each action leaves a trail of celestial phenomena, such as stardust showers or radiant auroras, making the user an unstoppable cosmic entity for the duration of the transformation.

Infinity Spiral Wand[600CP]

The Infinity Spiral Wand is an ornate, elegantly crafted wand that channels boundless magical energy, making it the ultimate weapon for any magical girl. Its design features spiraling patterns of gold and silver, with a radiant gem at its tip that pulses with infinite light. The wand can cast spells of immense power, from purifying vast areas of corruption to summoning celestial phenomena like falling meteors, auroras, or starbursts. Its most notable ability is to unleash devastating purification waves that cleanse darkness and restore balance. When wielded, the wand resonates with the universe's energy, making its wielder a beacon of hope capable of reshaping destiny.

Grunts

Basic Combat Armor [100CP]

A lightweight yet durable set of armor designed to protect against conventional weaponry and basic energy attacks. Made from advanced composite materials, it provides flexibility and freedom of movement while ensuring protection from small arms fire, shrapnel, and minor energy blasts. The armor features reinforced plating at critical points like the chest, shoulders, and limbs, with a sleek, tactical design that balances defense with agility, making it perfect for front-line operatives or reconnaissance missions.

Standard Issue Blaster[100CP]

A reliable, mid-range energy weapon that delivers consistent firepower in combat. Its ergonomic grip and lightweight frame make it easy to wield, while its rechargeable energy cells ensure sustained use without frequent reloading. The blaster fires precise energy bolts that can incapacitate most unarmored targets and damage lightly armored foes. Equipped with an adjustable power setting, it can switch between single-shot precision mode and rapid-fire bursts, making it versatile for various combat scenarios.

Shock Baton[200CP]

A compact, extendable baton that channels high-voltage electricity to deliver incapacitating shocks to opponents. Ideal for close-quarters combat, the baton's charge can disable enemies without lethal force, making it useful for subduing hostile targets or engaging in non-lethal takedowns. Its reinforced frame ensures durability in melee situations, and it features an insulated grip to protect the user from the electric discharge. With a quick-deploy function, it's an essential tool for crowd control or stealth operations.

Advanced Comms Unit [200CP]

A state-of-the-art communication device designed for secure, long-range transmissions in any environment. The unit features encrypted channels to prevent interception and interference, ensuring confidential communications even in hostile territory. It includes a built-in AI assistant for real-time tactical updates, language translation, and navigation support. The compact earpiece or wrist-mounted interface integrates seamlessly with combat gear, providing continuous, hands-free communication for coordinated team operations.

Pulse Grenade Launcher[400CP]

A sleek, shoulder-mounted weapon that fires specialized grenades emitting powerful energy pulses upon detonation. These pulses stun enemies within a wide radius, disrupting their nervous systems and rendering them immobile for several seconds. The launcher is equipped with a rapid reload mechanism and can fire multiple grenade types, such as EMP rounds for disabling electronics or concussive blasts for crowd control. Compact yet powerful, it's an essential tool for overwhelming enemy forces or halting advancing troops in their tracks.

Adrenaline Injector [400CP]

A compact device worn on the forearm or belt, the Adrenaline Injector delivers a fast-acting serum that temporarily enhances the user's strength, speed, and reflexes. Once activated, it floods the body with nanite-boosted compounds, enabling feats such as lifting heavy objects, dodging incoming attacks with precision, and striking with increased force. The effects last for several minutes, providing a critical edge during intense combat situations, but it requires a cooldown period to prevent physical strain.

Exo-Frame Suit [600CP]

An advanced exoskeletal suit designed to amplify the wearer's physical capabilities tenfold. Constructed from reinforced alloys and adaptive polymers, the suit grants immense strength, allowing the user to lift vehicles, punch through walls, or engage heavily armored foes directly. Its enhanced durability provides superior protection from gunfire, explosions, and energy blasts. Integrated with HUD (Heads-Up Display) technology, the suit offers real-time combat analytics, threat detection, and environmental data, making it a game-changer in both offense and defense.

Mini Mech Support [600CP]

A deployable mini-mech equipped with heavy armaments, including dual machine guns, missile pods, and an energy shield. Once activated, it autonomously engages enemies, providing suppressive fire and absorbing damage to protect the user. The mech is AI-controlled but can be manually overridden via a remote control unit. Compact enough to deploy from a portable case, it transforms rapidly into a formidable combat unit, offering unmatched firepower and tactical support in high-stakes battles.

Monster Creator

Containment Capsule[100CP]

A specialized capsule designed to securely store and preserve captured monster specimens for research, experimentation, or deployment. The capsule is lined with advanced stasis fields that suspend the creature in a dormant state, preventing it from aging or deteriorating. Built with reinforced alloy and energy-resistant barriers, it can withstand attempts to escape, ensuring even the most dangerous specimens remain confined. Equipped with a monitoring system, the capsule displays vital signs and environmental data, allowing bio-engineers to keep the monster in optimal condition for future use.

Bio-Engineer's Toolkit [100CP]

This compact, portable kit contains all the essential tools needed for advanced genetic manipulation and DNA splicing. It includes precision scalpels, syringes with mutagenic serums, and a portable gene sequencer. The kit's nanotechnology-enabled tools can manipulate DNA strands in real-time, allowing for on-the-fly modifications to monster biology. With built-in diagnostics and a sterile containment chamber, it ensures safe and efficient experimentation, making it an indispensable resource for any monster creator or bio-engineer.

Growth Accelerator Serum [200CP]

A potent biochemical concoction that dramatically accelerates the growth rate of monsters, allowing them to reach full maturity within hours. Once injected, the serum triggers rapid cell division and metabolic enhancement, ensuring swift development without sacrificing strength or intelligence. It is particularly useful for mass-producing mature monsters for combat or research purposes. The serum also imbues the creatures with enhanced physical attributes, such as increased muscle density and bone strength, making them more formidable in battle.

Mind Control Implant Chips [200CP]

Small, sophisticated implants designed to be surgically embedded into a monster's brain. These chips emit powerful neuro-signals that override the creature's natural instincts, ensuring absolute obedience to the user's commands. The chips can be remotely controlled via a handheld device or centralized hub, allowing for coordinated control of multiple monsters simultaneously. Advanced versions of the implant include features such as memory suppression, pain modulation, and combat behavior enhancement, ensuring the monster remains loyal and effective in any scenario.

Adaptive Armor Plating[400CP]

A cutting-edge armor system that dynamically adjusts to incoming threats, providing monsters with near-impenetrable defense. The armor is composed of nanomaterial that can alter its composition to counter various attack types, such as energy blasts, physical strikes, or elemental damage. As the monster battles, the armor analyzes threats in real-time and reinforces vulnerable areas, ensuring optimal protection. Despite its formidable defense, the plating remains lightweight, preserving the monster's mobility and agility in combat.

Rapid Regeneration Serum [400CP]

An advanced serum that grants monsters the ability to heal from even the most grievous injuries within minutes. Once introduced into the monster's system, the serum enhances cellular regeneration and tissue repair, allowing for the rapid recovery of lost limbs, severe wounds, or internal damage. It also boosts the creature's immune system, making it resistant to toxins and disease. The serum is particularly useful in prolonged battles, where the monster can sustain continuous damage and still remain a dominant force.

Overlord's Control Crown[600CP]

A majestic, intricately designed crown that grants the wearer total telepathic control over an entire army of monsters. Embedded with rare psychic crystals, the crown amplifies the user's mental power, allowing them to issue complex commands to multiple monsters simultaneously. The telepathic link is unbreakable, ensuring unwavering loyalty and coordination among the creatures. With this crown, the user can orchestrate massive, synchronized attacks or defensive maneuvers, turning their monstrous army into an unstoppable force.

Kaiju Creator Device [600CP]

A satellite , arcane machine capable of generating planet-threatening Kaiju from either the remains of dead monsters or live specimens when shoot from space. The device harnesses advanced genetic engineering and energy manipulation to mutate and enhance the creature's size, power, and abilities, creating behemoths capable of devastating entire cities or ecosystems. The Kaiju Creator Device is equipped with multiple customization settings, allowing the user to imbue the creature with unique attributes like elemental breath attacks, reinforced hide, or telepathic abilities. It is the ultimate tool for any would-be monster overlord.

Field Agent

Disguise Kit[100CP]

A compact kit containing everything needed to alter appearance and voice within moments, perfect for blending into any environment. It includes skin-tone altering makeup, synthetic facial hair, voice modulators, and contact lenses that change eye color. The kit's advanced nanofiber clothing can reshape itself into different outfits, providing full versatility. Ideal for covert operations, this kit ensures the user can assume a new identity instantly, evading detection and slipping past guards unnoticed.

Grapple Hook Gun[100CP]

A sleek, high-powered device that fires a reinforced cable with a durable grappling hook attached. Capable of latching onto ledges, rooftops, or structures, it allows for swift vertical or horizontal movement. The retractable motor can quickly pull the user to safety or provide rapid escape routes. Lightweight and easy to carry, the Grapple Hook Gun is essential for scaling buildings, crossing large gaps, or executing daring getaways, all while maintaining stealth.

Multi-Tool Gauntlet[200CP]

A versatile, tech-packed gauntlet fitted with an array of specialized tools for infiltration and sabotage. It features a hacking interface for bypassing digital security, EMP emitters to disable electronics, and data scramblers to erase traces of the user's presence. The gauntlet also houses lockpicks and a retractable micro-torch for physical barriers. With intuitive controls and a sleek design, it allows the user to overcome almost any obstacle, making it indispensable for any mission requiring technical prowess.

Tranquilizer Darts[200CP]

A set of non-lethal darts designed to incapacitate targets instantly and silently. Each dart is coated with a fast-acting sedative that induces unconsciousness within seconds. The darts are lightweight, easily concealed, and can be fired from a specialized wrist-mounted launcher or handheld device. Effective against both humans and some creatures, these darts ensure the user can neutralize threats without leaving a trace or causing lasting harm, perfect for stealth missions.

Portable Surveillance Kit [400CP]

A compact kit containing several mini-drones equipped with advanced cameras, microphones, and motion detectors. The drones can be deployed discreetly to gather real-time intelligence across a wide area. They transmit high-resolution visuals and audio directly to the user's device, allowing for constant monitoring of enemy movements. With features like cloaking technology and silent flight, these drones are ideal for reconnaissance, ensuring the user always has the tactical advantage without alerting enemies.

Silent Assassin Blade [400CP]

A weapon of choice—whether a blade, dagger, or other melee weapon—that emits no sound when used and leaves no trace of its strike. Forged from advanced, vibration-dampening materials, it delivers deadly precision without any audible cues. The weapon is coated in a non-reflective finish and designed for maximum lethality in a single strike. Whether in close quarters or as a concealed weapon, the Silent Assassin Blade ensures swift, undetectable eliminations.

Absolute Infiltrator Protocol [600CP]

A highly advanced, cybernetic enhancement or software implant your choice that allows the user to bypass any security system or barrier effortlessly. It grants the ability to deactivate alarms, manipulate biometric scanners, and disable electronic locks without leaving a trace. The protocol also includes advanced counter-surveillance measures, making the user undetectable to cameras or sensors. This ability ensures flawless entry into the most secure locations, turning even the most impenetrable fortresses into mere challenges.

Holographic Decoy Device[600CP]

A palm-sized device capable of projecting a highly convincing holographic duplicate of the user or any desired figure. The decoy can move, speak, and mimic the user's behavior in real-time, creating a perfect distraction to mislead enemies or lure them into traps. With high-resolution imaging and adaptive AI, the hologram appears lifelike and reacts convincingly to stimuli. This device is essential for confusing adversaries and executing flawless misdirections during infiltration or combat.

General

Command Tablet [100CP]

A sleek, portable device designed for battlefield commanders, the Command Tablet allows seamless coordination of troops in real-time. Equipped with advanced AI, it provides a comprehensive overview of troop movements, enemy positions, and environmental conditions. With a simple touch, the user can issue orders, adjust formations, or call for reinforcements. The tablet features encrypted communication channels, ensuring secure command even in hostile environments, making it an essential tool for strategic superiority.

Tactical Map Projector[100CP]

A compact, wrist-mounted or handheld device that projects a detailed, holographic map of the battlefield. The map updates in real-time, showing troop positions, terrain changes, and enemy movements. Users can zoom in on specific areas, mark strategic points, and share visual data with allies. The hologram is interactive, allowing for dynamic planning and rapid tactical adjustments, providing a clear edge in fast-changing combat scenarios.

Battlefield Logistics Kit [200CP]

This automated resupply system ensures troops are never left without critical resources. The kit deploys small drones or portable pods that deliver ammunition, medkits, and energy cells directly to the front lines. Designed for efficiency, it recognizes when supplies are running low and immediately sends replenishments. Compact and easy to carry, the kit keeps forces well-supplied, reducing downtime and maximizing combat effectiveness in prolonged engagements.

Defensive Fortification Device [200CP]

A powerful tool that deploys durable barriers or bunkers within seconds, the device rapidly constructs defensive structures using advanced nanotechnology. The barriers can withstand heavy artillery fire and adapt to various terrains, providing instant cover for troops. Whether creating reinforced walls, energy shields, or protective bunkers, this device ensures defensive positions can be established quickly, giving forces a tactical advantage in any battle.

Elite Guard Summoning Beacon [400CP]

A small, portable beacon that, when activated, summons a squad of elite soldiers trained in both defense and offense. These guards are equipped with advanced armor and weaponry, making them formidable protectors. They form an impenetrable perimeter around the user, intercepting enemy attacks and launching counter-assaults. The elite guard remains loyal and effective until the threat is neutralized, providing the ultimate defense for any general or commander in the field.

Siege Breaker Cannon[400CP]

A devastating personal weapon designed to obliterate fortified defenses and heavy armor. The Siege Breaker Cannon is a shoulder-mounted energy weapon capable of firing powerful, concentrated blasts that can shatter walls, bunkers, and enemy vehicles. Despite its immense power, it is lightweight and portable, allowing for rapid deployment. Its energy output is adjustable, making it versatile enough to handle both large-scale fortifications and individual targets.

Command Fortress[600CP]

A mobile, heavily fortified base that can be deployed anywhere, the Command Fortress serves as both a command center and a defensive stronghold. It is equipped with advanced weaponry, energy shields, and living quarters for personnel. The fortress can deploy support drones, launch tactical strikes, and provide medical facilities. Its reinforced structure makes it nearly indestructible, turning any location into a secure operational hub for long-term campaigns.

World Dominator Protocol[600CP]

A highly advanced system that temporarily grants the user command over massive armies or even entire nations once per jump. Through a combination of advanced AI, global communication networks, and psychological manipulation, the protocol allows the user to mobilize vast forces under their control. It can override local command structures and instill unwavering loyalty in troops. The protocol is limited in duration lasting only a month, but during its activation, it provides unparalleled military dominance, capable of reshaping entire regions or turning the tide of global conflict.

Technical Crew

Nano-Forge Kit [100CP]

A compact, portable device utilizing advanced nanotechnology to fabricate, repair, or disassemble intricate components in real time. Whether it's patching a damaged circuit or creating a new gadget from scratch, the Nano-Forge Kit ensures precision and efficiency, making it indispensable for field repairs or quick prototyping.

Dual-Purpose Uniform [100CP]

A versatile outfit that seamlessly shifts between casual attire and advanced combat gear. The transformation is activated by a simple gesture, providing protective armor, communication tech, and hidden weapon holsters when needed. Perfect for blending into crowds while remaining ready for action at a moment's notice.

Concealed Surveillance Glasses [200CP]

These unassuming glasses are equipped with advanced sensors capable of detecting hidden threats, scanning environments, and identifying individuals through facial recognition. They transmit real-time data to headquarters without drawing attention, making them ideal for covert observation and intelligence gathering.

Adaptive Power Core [200CP]

This advanced energy source automatically adjusts its power output to suit any connected device, from handheld gadgets to heavy machinery. It prevents energy surges, minimizes overheating, and prolongs the operational lifespan of even the most energy-intensive tools, making it a crucial addition to any engineer's arsenal.

Nano-Repair Swarm [400CP]

Contained within a sleek, durable vial, the Nano-Repair Swarm consists of millions of microscopic nanobots designed to perform rapid repairs. When released, these nanobots swarm over damaged equipment, machinery, or even biological tissue, meticulously repairing cracks, breaks, and malfunctions at the molecular level. They work quickly, seamlessly reassembling materials or healing minor injuries, making them invaluable in both combat zones and technical labs. The swarm is self-replicating but programmed with a strict shutdown timer to

prevent overuse or unintended consequences, ensuring controlled and precise repairs.

Pocket Vault Safe [400CP]

Disguised as a common item like a wallet or keychain, this high-tech mini-safe securely stores sensitive materials, from classified documents to small weapons. It uses biometric encryption and can only be accessed by its owner, ensuring the contents remain protected from any unauthorized access.

Sentient Assistant Drone [600CP]

A hovering AI-driven drone equipped with advanced sensors, manipulators, and analytical software. It assists in diagnostics, material assembly, and environmental scans. When threatened, the drone can deploy defensive measures such as energy shields or shock pulses, ensuring its operator's safety.

Hidden Base Deployment Pod[600CP]

This advanced device can transform any ordinary building or storefront into a fully operational secret base in minutes. Complete with concealed entrances, surveillance systems, and secure communication hubs, it allows for rapid establishment of a hidden operational center wherever needed.

Clean-Up Crew

Spectral Cleaning Gel [100CP]

A versatile gel that dissolves battle debris, including scorch marks, blood, and other physical evidence, at a molecular level. It restores surfaces to their original pristine condition, leaving no residue or lingering odors. Ideal for both indoor and outdoor clean-ups, the gel is non-toxic and evaporates within minutes, making it the perfect tool for discreet post-operation sanitation.

Molecular Dissolution Spray [100CP]

Contained in a sleek spray bottle, this liquid rapidly breaks down debris into harmless, invisible molecules. Whether it's shattered glass, weapon fragments, or biological remains, the spray ensures nothing is left behind. It's ideal for covert missions where leaving evidence behind is not an option, and its eco-friendly formula ensures no environmental damage.

Crisis PR AI Assistant [200CP]

A sophisticated artificial intelligence system in a phone capable of generating convincing media narratives, public apologies, or press releases within minutes. Whether it's spinning a story about a mysterious explosion into a "gas leak" or creating an inspiring rescue tale, the AI ensures the organization's public image remains intact. The assistant is highly adaptable, learning from past incidents to improve its messaging strategies over time.

Neural Recalibration Module [200CP]

This compact, handheld device emits subtle neural waves that manipulate the memories of witnesses, implanting false narratives tailored to the organization's needs. Within seconds, bystanders are convinced that nothing unusual happened, or that events occurred in a way favorable to the organization's cover. The module is discreet, effective, and ideal for managing crowd control during covert operations.

Mobile Camouflage Unit [400CP]

A deployable device that can transform entire vehicles, buildings, or other structures into inconspicuous versions of themselves. For example, an armored transport can appear as an ordinary delivery van, or a hidden base can look like a nondescript warehouse. The camouflage adapts in real time, making it ideal for covert operations in urban environments.

Stealth Recon Unit [400CP]

A team of automated drones, equipped with advanced cloaking technology, is deployed to scour the area for evidence. These drones meticulously remove surveillance footage, clean up chemical residues, and retrieve any biological samples left behind. Their invisible presence ensures complete operational secrecy, and they report back with real-time data to ensure thorough clean-up.

Crisis Zone Restorer [600CP]

Capable of rebuilding entire areas, including streets, buildings, and public spaces, this device uses advanced matter-reconstruction technology. Within hours, it restores damaged zones to their original state, erasing any signs of conflict. Civilians returning to the area will see no evidence of destruction, allowing normal life to resume seamlessly and ensuring the organization's activities remain secret.

Temporal Reset Beacon [600CP]

This powerful artifact creates a localized temporal bubble capable of rewinding time by several minutes. It undoes any physical damage, erases battle evidence, and resets events within the area to their previous state. Perfect for fixing catastrophic mistakes or erasing traces of conflict, the beacon ensures total operational discretion. However, its power is finite and must be used wisely.

Franchise Developer

Brand Enhancement Pen[100CP]

This sleek, unassuming pen has the extraordinary ability to improve any design, logo, or promotional material it touches. By simply sketching over an image or document, the pen transforms it into a visually irresistible masterpiece that captivates audiences. From refining product packaging to enhancing social media graphics, this tool ensures everything your organization produces becomes a cultural phenomenon.

Pop-Up Store Generator [100CP]

A compact, suitcase-sized device that deploys a fully functional pop-up shop within minutes. Each store is stocked with merchandise, themed décor, and even holographic staff to manage sales and customer interactions. Perfect for events or product launches, it draws attention wherever it appears, generating buzz and revenue effortlessly.

Media Manipulation Console[200CP]

A state-of-the-art console that crafts viral media content with pinpoint precision. It identifies trending topics and cultural phenomena, ensuring the organization's brand becomes a dominant force across all platforms. Whether it's memes, viral videos, or social media campaigns, the console guarantees widespread engagement and influence.

Holographic Mascot Creator[200CP]

This portable device projects customizable holographic mascots designed to charm or intimidate. These mascots can interact with the public in real-time, increasing brand loyalty and excitement. Whether it's a cute animal companion or a formidable guardian figure, the mascots draw crowds and leave lasting impressions.

Exclusive Licensing Stone[400CP]

A magical artifact that ensures any product bearing your organization's brand becomes a must-have item. The stone imbues products with an irresistible allure, creating insatiable demand among consumers. Whether it's clothing, tech gadgets, or collectibles, every item is perceived as an exclusive treasure.

Franchise Expansion Blueprint[400CP]

A highly detailed guide infused with advanced analytics that pinpoints the most lucrative locations for expanding your brand. It calculates economic trends, customer demographics, and local competition to ensure every new franchise maximizes profit and influence with minimal risk. It's an essential tool for ambitious expansion plans.

Infinite Merch Machine[600CP]

A powerful device capable of producing an endless supply of high-quality merchandise. Whether it's clothing, toys, or limited-edition collectibles, the machine can customize items to any design or theme. Perfect for large-scale events or rapid product launches, it ensures the organization never runs out of stock or opportunities to profit.

Infinite Contract Generator[600CP]

This magical or technological marvel ensures every business deal, sponsorship, or licensing agreement signed is perfectly advantageous. It subtly manipulates terms to favor the organization, securing optimal profits, long-term benefits, and legal protection. Ideal for those navigating high-stakes negotiations.

Companions:

My Old Team 50

You may import companions you have brought with you, 50 CP each, or 8 for 300CP. Each one gains a free background. and 600 CP to spend. They may not take drawbacks, but you may give them CP, spending 100 each time to give them each an additional 200.

My New Team 100

Sometimes having friends would be nice. Buying this once will allow you to add any allies you've made here as companions. You may buy this multiple times.



Drawbacks:

You are limited to +800 Cp from drawbacks.

Supplement [+0]:

Not exactly the most in-depth of places, so you can use this jump as a supplement for other jumps. The CP here can only be used in this jump, and vice versa; this includes extra CP from drawbacks.

Time Extender [+100]:

Want to stay longer for more sexy Warriors? Or just continue your adventure ? Or maybe even fight against Heaven and Hell. No matter the reason, you stay for an extra 10 years each time you choose this. You can stay as long as you like, but are still going to gain a maximum of 800 CP.

Eighth Grade syndrome [+100CP]:

You now have the tendency to speak and act like a chuunibyou, complete with exaggerated poses and long-winded explanations. This often annoys everyone around you, but it also adds a unique flair to your character.

Paperwork Overload [+100CP]:

Endless bureaucratic tasks consume your time, slowing down progress on missions and projects. Whether it's filling out endless forms, submitting detailed mission reports, or obtaining permits for even minor actions, the constant barrage of administrative tasks eats away at your valuable time and focus. Even in the heat of critical missions, you may be forced to stop and fill out forms or answer to superiors, slowing your operations to a crawl.

Unlucky Streak [+100CP]:

You suffer from minor but persistent bad luck, like equipment failures or tripping over obstacles at the worst moments. No matter how well you prepare, things always seem to go wrong—locks that jam, weapons that misfire, or allies who arrive a second too late. Even the smallest mishaps build up, creating a constant stream of frustrating setbacks that turn simple tasks into tedious challenges.

Recognizable Face [+100CP]:

Your identity is harder to conceal, making it difficult to blend into crowds or go unnoticed. No matter how skilled you are at disguises, something about your appearance—be it a distinctive feature or aura—makes people remember you. Civilians, law enforcement, and even enemies find it easier to recognize you, putting you at constant risk of exposure or capture in sensitive missions.

Resource Starvation [+200CP]:

Access to resources, whether monetary, energy, or supplies, is severely limited, forcing creative improvisation. You're constantly working on a shoestring budget or with insufficient supplies, leaving you unable to acquire the tools or support necessary for success. Improvised solutions may get you through the day, but they're rarely as effective or reliable, adding constant pressure and risk to every mission.

Unreliable Allies [+200CP]:

Your team or contacts frequently fail to deliver on promises or arrive late to critical missions. Whether through incompetence, bad timing, or conflicting priorities, those you rely on often let you down. You can't trust backup to arrive when needed, supplies to be delivered on time, or vital information to be accurate, forcing you to adapt to situations with unreliable support.

Perpetual Wanted Status [+200CP]:

Authorities or rival organizations are constantly on your trail, limiting your ability to operate freely. Your name and face are known to every enforcement agency or enemy faction, making safe travel or covert operations nearly impossible. You are perpetually on the move, constantly looking over your shoulder, and your every move is scrutinized by those who seek to capture or eliminate you.

Tech Glitches [+200CP]:

High-tech gadgets frequently malfunction, often at critical moments, requiring constant maintenance. No matter how advanced or expensive your gear is, it always seems to break down at the worst possible times. From weapons that refuse to fire to cloaking devices that fail mid-mission, you must constantly repair and maintain your equipment, distracting you from the task at hand.

Combat Handicap [+300CP]:

Your reflexes are slower, or a physical limitation makes you less effective in combat. Whether due to injury, aging, or an inherent flaw, your physical abilities fall short when it counts. You can't keep up with the speed or strength of your opponents, making you vulnerable in direct confrontations and forcing you to rely on strategy over brute force.

High Alert [+300CP]:

Your enemies are always aware of your presence, making stealth or surprise attacks nearly impossible. No matter how careful you are, your adversaries are always one step ahead, prepared for your arrival. Ambushes fail, traps are anticipated, and every step forward feels like walking into a carefully laid snare, forcing you into constant open conflict.

Mysterious Curse [+300CP]:

You are afflicted by a curse that causes random and unpredictable setbacks during missions. The curse might manifest as inexplicable bad luck, spontaneous equipment failure, or sudden physical weakness. Its effects are capricious, and no amount of preparation can fully account for the chaos it brings, leaving you constantly wary of when it will strike next.

Oath of Honesty [+300CP]:

You are magically or contractually bound to never lie, making deception-based missions difficult. Whether through magic, advanced technology, or a binding contract, you are compelled to tell the truth under all circumstances. Espionage, negotiations, and any situation requiring subtlety or misdirection become almost impossible, as you must navigate every conversation with painful sincerity.

Constant Pain [+400CP]:

You endure chronic pain that impairs your ability to focus and perform effectively. Whether due to an old injury, a disease, or a supernatural curse, pain is a constant companion. It wears down your concentration, saps your stamina, and leaves you vulnerable in critical moments. No amount of medication or rest provides lasting relief, and every action becomes a test of endurance.

Infamous Reputation [+400CP]:

You are widely despised, making it difficult to form alliances or negotiate with others. Your name is synonymous with disaster, betrayal, or scandal, and people react with fear or hostility wherever you go. Allies are scarce, cooperation is grudging at best, and every interaction requires overcoming the stigma attached to your name, whether deserved or not.

No Rest for the Wicked [+400CP]:

Sleep or rest provides little to no relief, leading to constant exhaustion and mental strain. No matter how long you sleep, you never feel fully rested. Your body aches with fatigue, and your mind is perpetually fogged. Every task takes twice the effort, and your ability to make quick, decisive choices is dulled by the relentless, gnawing tiredness.

Mission Sabotage [+400CP]:

Your missions are frequently sabotaged by unknown forces, forcing you to adapt on the fly. Whether through betrayal, unforeseen accidents, or deliberate enemy interference, your plans rarely go smoothly. Supplies vanish, allies turn traitor, and objectives shift unpredictably, leaving you in a constant state of damage control as you try to salvage success from chaos.

Hunted by the World [+600CP]:

Every major organization and authority seeks to capture or eliminate you, offering no safe haven. Governments, criminal syndicates, and powerful factions are all arrayed against you. Nowhere is safe, and anyone who helps you becomes a target. You are perpetually on the run, with entire networks dedicated to tracking your every move.

Permanent Injury [+600CP]:

You suffer a debilitating injury that cannot be fully healed, severely limiting your effectiveness. Whether it's a crippled limb, blindness, or another serious impairment, the injury restricts your capabilities and cannot be fixed. Every mission is more dangerous, as your reduced capacity makes you a liability, forcing constant adaptation to your new reality.

Mental Deterioration [+600CP]:

Your mind slowly deteriorates, making it harder to focus, strategize, or trust even your own thoughts. You struggle with memory loss, hallucinations, or bouts of paranoia that make every decision fraught with uncertainty. Allies may question your sanity, and you must fight to hold onto your identity while your own mind betrays you.

Total Isolation [+600CP]:

No allies, no resources, no support. You are entirely alone in your mission, and no help will come. You must survive and operate without any external assistance, relying solely on your own skills and ingenuity. Even the simplest tasks become grueling ordeals, and failure means utter and final defeat, with no one to save you.

Ten Years Later:

Go Home: What, you finished? Here? Well, we won't ask. Whatever it is you gained here, we hope you enjoy it. You return home with all that you have accrued over your chain, and time resumes in all the worlds you visited.

Stay Here: This world does have a certain... allure, hmm? Don't worry, we won't judge. Add 1000CP as a bonus.

Move On: Ah, but of course. The journey never ends, does it? Go forth and have fun. Make some new friends.

Notes:

1, Just something I made as I am taking a break from Warhammer jumps they take a toll on my mind.