

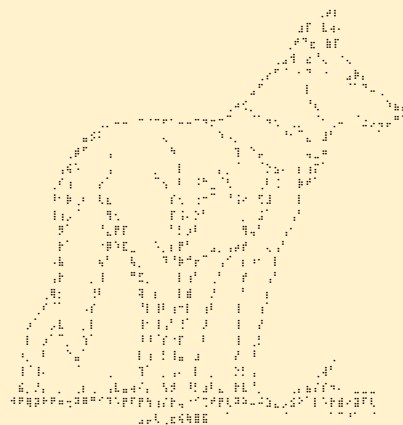
# Tales of Wolves jumpchain



by Faucheusestar

Welcome to a world populated only by wolves of all types and shapes, from the normal to the most extraordinary. This land is filled with tales and legends about its cute, fluffy creatures.

Take **1000 Choice Points** to fund your adventures.





## Starting Location

*Roll a 1d6 to determine where you start, otherwise pay 100 CP to choose your Starting Location.*

### 1• Forest

At first glance, this is a very ordinary forest, although many stories have been told in such places.

### 2• A Cave

A cozy den, but nobody seems to be living there, maybe for a reason?

### 3• Ruins

Its night and thunder is rumbling all around you, and there seems to be an old church in ruins, its bell tower having collapsed inside.

### 4• Civilisation

You've landed in what appears to be a village, or perhaps a town.

### 5• Land of tales

Maybe there's a place in a fairytale/a game/story or any media related to dogs that particularly speaks to you. If that's the case, you'll appear there. What's more, at the end of the jump you can add it and all its contents to your warehouse.

### Free Pick.

You are free to choose where you choose from the available options.

## Age and Gender

Freely choose your own age or gender.

## Origins

### Drop-In [Free]

You are dropped in this new universe with no background, memories, or documentation.

### Dogs Tales [Free]

You are an inhabitant of this world full of legend and myth, and the magic of this place has endowed you with the ability to use the power of tales and stories.

### Legendary dog [Free]

You are a strange wolf with dog-like powers considered by most of the world's inhabitants to be mere rumors, cryptids and legends in their own right.

## Race

*Jumper isn't reduced to the lifespan of a normal wolf*

### Wolf [+200 CP]

You're a little dog or a wolf cub. If you couldn't talk, it would be hard to tell you apart from a normal wolf. You can also be an adult wolf or a dog of a larger species, but you won't have the +200 CP.



### Anthropomorphic wolf [free]

You may stand on your paws, you may look like an anthropomorphic wolf or maybe it's just your head with a human body the size of an adult human... What is a human? Maybe it is a cryptid.



### Wolf girl [free]

Whether you're a tiny wolf girl the size of a small wolf standing on her paw or a human-sized wolf girl, or maybe you prefer girls/boys with just fluffy ears and tails? This option is for you



### Strange wolf [200 CP]

You are a supernatural wolf can be a Barghest, Yeth Hounds or other from another media/tale/video games and have its power and weakness, if the lovely doggo you choose has perk associated with him on this jumpdoc you can take them for free



## **Perks**

*Origins get their 100cp perks for free and the rest are discounted to 50%.*

### **General [Undiscounted]**

#### **Flair [Free]**

You have a very good sense of smell, surpassing that of normal dogs and wolves, capable of sensing what you're looking for from many miles away beyond what your fellow wolves could have done... Fortunately, you're capable of toning it down if the need arises.

#### **Therianthropy [100 CP]**

You can transform yourself into a wolf or, if you are a wolf, into a wolf girl or an anthropomorphic wolf.

#### **Pack tactic [400 CP]**

Strength in numbers, wolves don't fight alone and you're a master of the art of hunting in a pack, you operate with such a mastery of teamwork that it feels like you're a single being: when you fight as a team, each of you sees your abilities doubled, and you're able to use some of your team-mates' greater strength and learn it much more quickly than is normally possible.

## Drop in

### **Treasure hunter [100 CP | Free for Drop in]**

Over time, many treasures have been lost, whether they be artifacts, chests or even dinosaur bones. You have an additional sense that indicates their presence, ideal for any treasure hunt or finding your toys that you have buried.

### **Police dog [100 CP | Free for Drop in]**

Sometimes you have to find a specific plant or fungus for a potion, or maybe you've dug up the flowerbed and are trying to make up for your mistake. Or you have to find out where the explosives, drugs or clues are! Now all these tasks are a lot easier for you and you'll never confuse coke with icing sugar!

### **'When you talk about the wolf, you see the tail.' [200 CP | Discounted for Drop in]**

When people talk about you, you know what they are talking about and you can even know what they are saying. What's more, you can teleport there to surprise them and prove the veracity of this idiom.

### **Wolf tamer[200 CP | Discounted for Drop in]**

You're very good at taming canines and all wild creatures to a certain extent, which probably comes from your ancestors. once tamed you can add them as followers/companions they won't take up any space and can be brought along with you

### **Loyal as a dogo [400 CP | Discounted for Drop in]**

Dogs are loyal to their masters, sometimes even too much so. From now on you are able to inspire this supernatural level of loyalty in your subordinates, none will ever betray you, and any attempt to turn your subordinates against you will fail, whether through mental control or otherwise.

### **Cry wolf [400 CP | Discounted for Drop in]**

The funny thing is, there's always someone who sees the threat and tries to warn their group that Big Bad Jumper is up to no good, so the more your opposition worries about your evil plans and actions, the more they lose credibility in their social/group space.

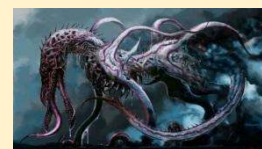
### **Cù Sìth [400 CP | Discounted for Drop in]**

As well as moving around perfectly silently, you can use the fairy circles to travel in their world or from one circle to another.



### **Hounds of Tindalos [400 CP | Discounted for Drop in]**

You are an eldritch dog although few even know what you are supposed to look like, You can travel through space-time and pop up wherever angles or corners can be found, especially those sharper than 120 degrees.



**The guardian of the underworld? He's a good Doggo and my friend! [600 CP | Discounted for Drop in]**

With this, you can go and find souls in the various afterlife worlds and bring them back to the world of the living if you pass a very easy little test on the subject of doggos and the afterlife in question, which will resurrect them. In fact, all dogs like Cerberus and those with a similar role start out as your friends.



### **Guardian [600 CP | Discounted for Drop in]**

You are a guardian, whether of a place or a person, and when you protect something you become much more powerful, gaining a supernatural instinct for the presence of a threat. What's more, the world and fate seem to act in your favor, provoking little coincidences that help you in your task.



## Dogs Tales

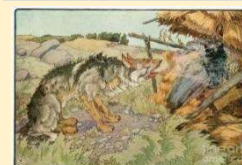
### **The Wolf and the Fox (Grimm tale) [100 CP | Free for Dogs Tales]**

You always know the best ways to find food, whether it's defenseless lambs or delicious crepes resting on a window, it's as if a clever fox has whispered them to you although don't be too gluttonous, it could play tricks on you!



### **I'll huff, and I'll puff, and I'll blow your house in [100 CP | free for Dogs Tales]**

Your breath is so powerful that it can blow away houses made of straw or wood, but it will probably be harder on brick and stone.



### **Dog (zodiac) [200 CP | Discounted for Dogs Tales]**

You have the powers of the Chinese zodiac dog, including a mastery of the element earth in Wuxing magic, as well as a good understanding of this type of magic.



### **Big Bad Wolf[200 CP | Discounted for Dogs Tales]**

You are the Big Bad Wolf, a celebrity for sure, you appear in many tales, making you the Boogeyman, and you inspire the terror that you would expect from such a prestigious position. Despite your reputation, if you disguise yourself or try to deceive them, people will lower their guard, even if your disguise is ridiculous.



### **Lélaps [200 CP | Discounted for Dogs Tales]**

Your prey can never escape, so you'll always know where they are and can track them anywhere, even foxes!



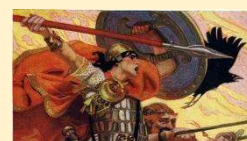
### **Red Riding Hood [400 CP | Discounted for Dogs Tales]**

Sometimes Little Red Riding Hood doesn't wait for the hunter... because she's the hunter and the wolf too! You're exceptional when it comes to hunting and the use of weapons linked to the hunter, the lumberjack and the tale of Little Red Riding Hood, such as shears, axes and rifles... Baskets and galettes! You're the terror of the woods because your attacks are now wolf slayers, inflicting enormous damage on wolves and other doggo.



### **Cú Chulainn [400 CP | Discounted for Dogs Tales]**

Do you know this hero? Well, like him, perhaps thanks to your demigod blood, you're incredibly strong and resilient, and you know how to wield a spear and use rune magic.



### **Anubis [400 CP | Discounted for Dogs Tales]**

You are a deity similar to Anubis, with great expertise in mummification and the ability to bring the embalmed dead back to life. What's more, you're really good at protecting tombs, whether through traps or other means.



### **Fenrir and Nordic Doggo [600 CP | Discounted for Dogs Tales]**





You are a divine wolf, and as well as being able to grow as much as you like until you reach the perfect size for your eyes, you can eat the moon and the sun and the powers linked to these two make you immune to them. What's more, you can match the gods and therefore possess the physical abilities needed to defeat them.

**Xolotl[600 CP | Discounted for Dogs Tales]**

You are an Aztec deity with the head of a dog and the twin brother of a famous dangerous noodle with domains less frightening than yours, because you are in fact the god of twilight, fire, lightning and twins and the lord of monsters, misfortune, death, disease and deformities.

**The best of trees must Yggdrasil be and Jumper of wolves [800 CP | Discounted for Dogs Tales]**

You are the best of the wolves a bit like Garm although the latter was probably Fenrir at the start in the Poetic Edda, if there was a most powerful wolf in a jump then you would be at the same level +1, after this jump you can choose something this will become the best in its category and will gain powers doing it on a bridge will create a Bifröst for example.

## Legendary dog

### **Black Dog [100 CP | Free for Legendary dog]**

You are a dog of imposing size, your eyes shine with an infernal glow and you are capable of generating an aura of terror and despair.



### **Nine-Eared Hound [100 CP | Free for Legendary dog]**

Like this doggo, you can detect a combination of prey or if you find something of interest, your ears will move. The more they move, the more this is a good sign.

### **Yeth Hounds [200 CP | Discounted for Legendary dog]**

You're a dog without a head that can let out howls so horrible that it's said that people who hear it will soon die, whether this is true or not remains to be seen, although you'll certainly traumatize people. Especially when they understand what your adorable friends were, because you can create other Yeth Hounds, how do you ask? Well, it's very simple, with the souls of the children who died in the forest coming back as headless dogs.



### **Barghest [400 CP | Discounted for Legendary dog]**

You have huge claws and sharp fangs, but if that's all it was, it wouldn't be such a problem. You're a shapeshifter, able to transform yourself into numerous animals and even headless humans.



### **Huodou [400 CP | Discounted for Legendary dog]**

As well as being a flame dog, you can resist flames and even eat them as if they were a tasty snack, and you can breathe flames.



### **Raijū [400 CP | Discounted for Legendary dog]**

You are a creature made up of lightning that can fly and generate lightning.



### **Dobhar-chú [400 CP | Free for Legendary dog]**

When you are seriously injured you can emit a whistle that will spontaneously appear a genderbend double of you that will come to your rescue. It is temporary however but your double keeps the memories of its time invoked. You could maybe find a way to make it permanent with time.



### **Inugami [400 CP | Free for Legendary dog]**

You are a very powerful shikigami. You can choose a person that you designate as your master if you possess him he becomes much more powerful and is cured of his illness and other health problems, moreover you can also possess others to cause them illness and ultimately death.



### **Cerberus[600 CP | Discounted for Legendary dog]**

You have three heads which is very practical because it allows you to think three times faster or three different things at once, you can prevent the means of resurrection from working in the jump where you find yourself to do this it creates a double of you that you control and with you pursue the soul and had to bring it back in the beyond that you can easily access once made the doubles that can be used only to its disappear.



**Aralez [600 CP | Discounted for Legendary dog]**

You're an adorable winged doggo, and as well as being able to fly high in the sky, your licks bring the dead back to life.



## Items

*Items may be imported into similar - items, weapons to weapons, clothes to clothes, etc.*

### Drop in

#### **Paper dogs [100 CP | Free for Drop in]**

This is a pretty picture of a dog cut out of paper to ward off evil spirits. You can get more of them at festivals.

#### **Fairy ring [100 CP | Free for Drop in]**

It's a small pouch containing a mixture of fairy powder and flower seeds. When you plant them in the shape of a circle you instantly create a fairy circle. You find a new one each time you visit a new fairy-related place.

#### **Wolf in sheep's clothing [200 CP | Discounted for Drop in]**

With this sheep's fur you can easily pass yourself off as a good person, whatever your true personality. What's more, it doesn't stop at people - spells to check your alignment will say you're good, items that can only be used by good people will go wrong and even anti-evil powers will fail.



#### **The drug Liao [200 CP | Discounted for Drop in]**

This is the same drug used by Halpin Chalmers in the short story The HOUNDS of TINDALOS, if you take it you will experience the point of view of every living being past at the same time, although you are able to gain some knowledge, using this drug is extremely dangerous as if you don't regain your wits in time or dig too deep the famous hounds will sense you and then try to come through the corners of the room to kill you.

#### **Weighing of the heart [400 CP | Discounted for Drop in]**

This is not an ordinary scale, it's magic! If the Heart of your target is heavier than the feather (this feather is based on your own beliefs of good and evil) Amount will devour it, causing the definitive death of the deceased. It can also be used on a living person, creating an illusory version of their heart, but your target could potentially dodge and fight the devourer.



#### **Seeds from dog [400 CP | Discounted for Drop in]**

This is a copy of the stock of seeds obtained by a little dog in Chinese mythology. The stock contains a little of each plant that can be grown for food, and an adorable little dog will come and bring you the seeds of the local plants every jump in exchange for a little food.

#### **Rise, my bloodkin [600 CP | Discounted for Drop in]**

Wolves don't travel alone, unless you're all edgy, but don't worry, you can keep your edge with this. You have your own pack of wolves of the type you want, although the more powerful they are the less you have, maybe Barguest and other Yeth Hounds at your command that you can summon from your shadow or by snapping your fingers and other chuunibyou thing... I mean badass action!



## Dogs Tales

### Little red's basket [100 CP | Free for Dogs Tales]

A basket full of wine and cakes he fills every day for some reason he comes in a red cape



### Dog book [100 CP | Free for Dogs Tales]

A collection containing each book of poems and stories about our friends the wolves and other doggo, delivered with a few goodies on this theme.

### "Let me in, children..." [200 CP | Discounted for Dogs Tales]

These honey pots aren't just delicious, eat a good spoonful and you've got the voice you want! Ideal for tricking delicious goats or for any imitation contest, you get new ones every week and delicious goat meat guaranteed with no added stones.



### Wolf skin[200 CP | Free for Dogs Tales]

This wolf skin allows anyone wearing it to transform into a werewolf, be it a bipedal humanoid form, a giant wolf or any other type of werewolf you wish.

### The Wonderful Musician [400 CP | Discounted for Dogs Tales]

You wouldn't have a friend who is a fox and a hare, would you? Glad to see you've managed to steal the minstrel's violin, and it's not just any violin, it's a magical one, so all you have to do is play it and your audience will be charmed.

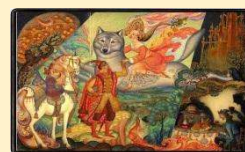


### Gae Bolg [400 CP | Discounted for Dogs Tales]

The spear used by Culann's dog is not only very good, it also possesses a number of powers: you can summon it in your hand by calling it out, and if you find yourself on water, you can throw it by striking it with your foot. It will propel itself into your target before changing into a mass of thirty barbs, ripping your target. You can then take it out by cutting the flesh of your unfortunate victim once it's done and out it returns to its original form.

### "Tsarevich Ivan, the Firebird and the Gray Wolf" [600 CP | Discounted for Dogs Tales]

Did you threaten a poor raven mother to get them? In any case, you have the various objects from the tale, such as the water of death, which restores the body, and the water of life, which resurrects them, as well as a Firebird.



### Gleipnir [600 CP | Discounted for Dogs Tales]

It's the legendary chain that sealed Fenrir himself, forged by dwarves from six impossible elements and as thin as a silk ribbon but stronger than any chain.



## Legendary dog

### **Wulver's fish basket [100 CP | Free for Legendary dog]**

You find fish at your window, still spawning as if they had just been caught. Sometimes you come across a man with a wolf's head and a fishing rod dropping them off.



### **Legendary dog hunting kit [100 CP | Free for Legendary dog]**

This Legendary dog hunting kit contains everything you need for your search, from traps to cameras and motion detection cameras. Going through boxes that miniaturize the wolves when you store them inside

### **Black dog's treasure [200 CP | Free for Legendary dog]**

In old ruins or near churches and crossroads on stormy nights you will find a small chest filled with gold coins, no doubt the treasure protected by this black dog during his lifetime.

### **Komainu[200 CP | Free for Legendary dog]**

Two stone statues representing a dog and a lion, these two are very effective at repelling evil spirits and will stand guard at the entrance where you place them. They can also change from their stone statue form to their living form and move around.

### **Barghest 's fur[200 CP | Discounted for Legendary dog]**

This Barghest fur is very useful because it can be used to create coats that allow the wearer to transform into a specific animal, a bit like the animal cloak you see in fairy tales. If you venture into the city at night and look hard enough, you'll be able to obtain new ones.

### **Dobhar-chú's fur [400 CP | Discounted for Legendary dog]**

You have the fur of this Legendary dog, but it's not just otter fur, it has magical properties including protecting ships from destruction, horses from injury and people from gunshot wounds. You get a new one every time you visit a new lake.

### **Forbidden grimoire [400 CP | Discounted for Legendary dog]**

This grimoire contains numerous magic formulas and monstrous rituals, such as the one for creating inugami.

### **Hades [600 CP | Discounted for Legendary dog]**

You own your own realm, located in a pocket dimension, which can be used as a world of the dead so that your subjects/friends or whomever you manage to put in it can live there. Basically, it resembles the realm of the Greek god Hades, but you are free to choose its appearance. In addition, this underground kingdom is extremely rich in minerals and precious gems from the various Jump you have crossed, and the veins are replenished over time.



## Companions

*Companions can purchase more companions.*

### Companion Import [50-200]

Do you want to bring your friends to this adventure? Or can create new friends, this is for you

50 CP/companion, 200 CP/8 companions, each gets 600 CP.

### Canon Companion [Free]

You want one of the canon characters as a companion then this option and for you if you manage to convince the latter he will be able to follow you on your adventures and obtain 300 CP as a gift





## Scenarios

### Scenario Two [search for the mysterious Doggo]

Yeth Hounds, Barghest, Dobhar-chú ♪ You've gotta catch them all, the Cryptids! Even in places populated by ghost black dogs and mysteries, cryptids are rare. They live in such remote places that some snake doubts their existence

#### Reward

You've proved that cryptids exist!

- Firstly, you gain the ability to make animals that are considered cryptids in your other jumps real, albeit a little rare, as well as a zoo/museum where you can store them. There's even a nice souvenir shop filled with criptide products and lots of plushy which is repeated every week.
- Plus you get a wing of the museum containing live or stuffed versions of every species of wolf/dog you've seen
- You'll also get 600 CP

## Drawbacks

### **Self-Insert [+0]**

So you want to be one of the Named characters huh, well if you take the appropriate background, race and skills as closely as possible then you are free to go in as any character you would like.

### **Supplement [+0 CP]**

You can use this Jumpdoc as a supplement

### **Extended Stay [+100 CP]**

For each purchase of this your time here is extended 10 years.

### **Stones are not tasty! [+200 CP]**

You shouldn't have eaten that cute red snack, because a lumberjack took it the wrong way and filled your belly with stone. Strangely enough, it doesn't kill you, but it's particularly uncomfortable and makes you feel very heavy.

### **The Boy Who Cried Wolf [+400 CP]**

You can't help it Jumper, you have to do the same old joke of shouting that a big threat is coming to town, in fact you do it every day or so to the point that the locals have had enough of your bullshit... The problem is that whatever major threat you're shouting about will arrive when you least expect it, and no-one will believe you.

### **The Hunter [+400 CP]**

You are being pursued by a hunter who has a gun and an axe and is particularly skilled. Although he is not supernatural, he can kill you, so don't underestimate him.

### **Cat hunting [+400 CP]**

Death is too busy at the moment and has asked you to look after an anomaly, an annoying creature called a cat. Just hearing the name makes you want to run after it at least as much as grabbing your tail! He doesn't care about death because he's lived nine lives, so you have a choice: either hunt him down and kill him, but he's a very good swordsman and particularly resourceful, or convince him that life is a precious thing.

### **Wolf coat [+400 CP]**

You have a wolf coat that looks exactly like yours in your wolf form, so you have to be careful that no-one steals it from you, so that you burn it, otherwise at the end of the jump you won't have your current form as alt form, imagine doing a jump on wolf and not even being one at the end!

### **You are a strange doggo [+400 CP]**

In this world populated by dogs... Well, maybe not! You're not a wolf, in fact you're just your old self in a very poor quality, albeit strangely cute and funny, wolf costume. The problem is that you can't let anyone notice otherwise you'll have to wear a really stupid dog costume for the next ten jumps!

### **Geas[+400]**

Because of this Geas, you can't eat dog meat, but you can't refuse hospitality either, and if you break one of its rules, you'll be greatly weakened until the next time you jump.

**Partial Lockdown [+400 CP]**

You have no warehouse and the only items you own are the ones you're carrying. What's more, your powers are adapted to the level of power in this world

**Lockdown [+600]**

You have no **Out Of Context** items, powers, or warehouse.

## **Decisions**

*You have three choices ...*

### **Go to next Jump**

Continue onto the NEXT GREAT ADVENTUUUUURE!!!!!!

### **Stay**

Stay and enjoy your current life.

### **Go back**

Tired of your travels and want to rest back home, well then this is for you, grab this ticket back to your starting point and go see old friends.